

**UNIFORM STANDARD DRAWINGS  
CLARK COUNTY AREA, NEVADA**

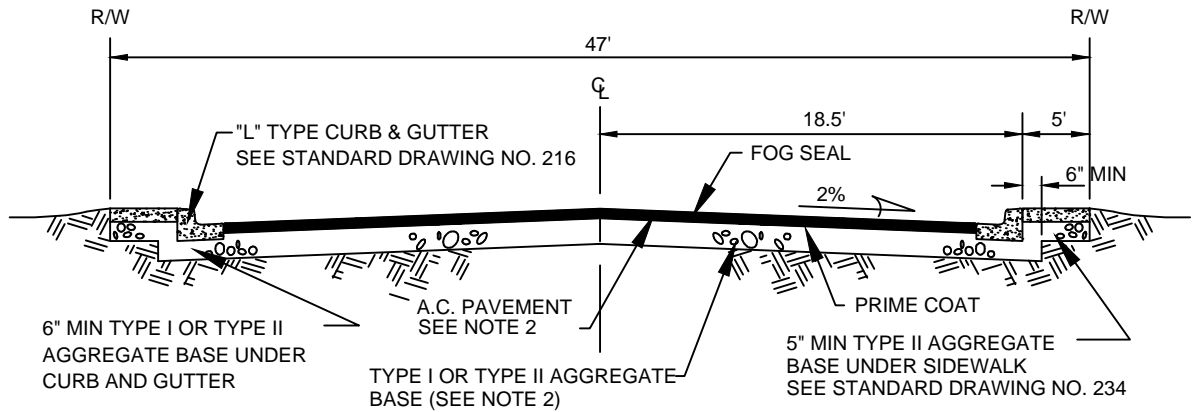
**YEAR 2017 REVISIONS**

<b><u>DWG NO.</u></b>	<b><u>TITLE AND REVISIONS SUMMARY</u></b>	<b><u>EFFECTIVE DATE</u></b>
206.S1	"Local Residential Urban Area Street Sections" – Drawing revised to prohibit the use of Option B and One Way Residential Street Section in Clark County.	1/1/2017
217.1	"30 Inch Modified Roll Curb and Gutter Residential Area" - New Drawing to help meet Americans with Disabilities Act Accessibility Guidelines.	1/1/2017
217.2.S1	"30 Inch Roll Curb Residential Area" - Drawing revised to help meet Americans with Disabilities Act Accessibility Guidelines.	1/1/2017
217.3.S1	"Residential Curb & Gutter R-Type" - Drawing revised to help meet Americans with Disabilities Act Accessibility Guidelines.	1/1/2017
224	"Commercial and Industrial Driveway (Option A)" - Drawing revised to help meet Americans with Disabilities Act Accessibility Guidelines.	1/1/2017
234	"Sidewalk" – Drawing revised to modify dimensions for weakened plane joint detail.	1/1/2017
319	"Lower Pole Details for Pipe and Mast Arm Poles" – Drawing revised to change dimensions of hand holes.	7/1/2017
806	"Signal Standard Type 1-A, 1-B" - Drawing revised to change dimensions of hand holes.	7/1/2017
808-1	"Type XX-30 Ft. Signal and Luminaire Pole (45 Ft. or less Mast Arms)" - Drawing revised to change dimensions of hand holes.	7/1/2017
808-2	"Type XX-30 Ft. Signal and Luminaire Pole Details" – Drawing revised to change dimensions of hand holes.	7/1/2017
808-3	"Type XX-A-30 Ft. Signal and Luminaire Pole (45 Ft. or less Mast Arms)" – Drawing revised to Change dimensions of hand holes.	7/1/2017
808-4	"Type XX-A-30 Ft. (50 Ft. Thru 60 Ft. Mast Arms) Signal & Luminaire Pole Details" - Drawing revised to change dimensions of hand holes.	7/1/2017

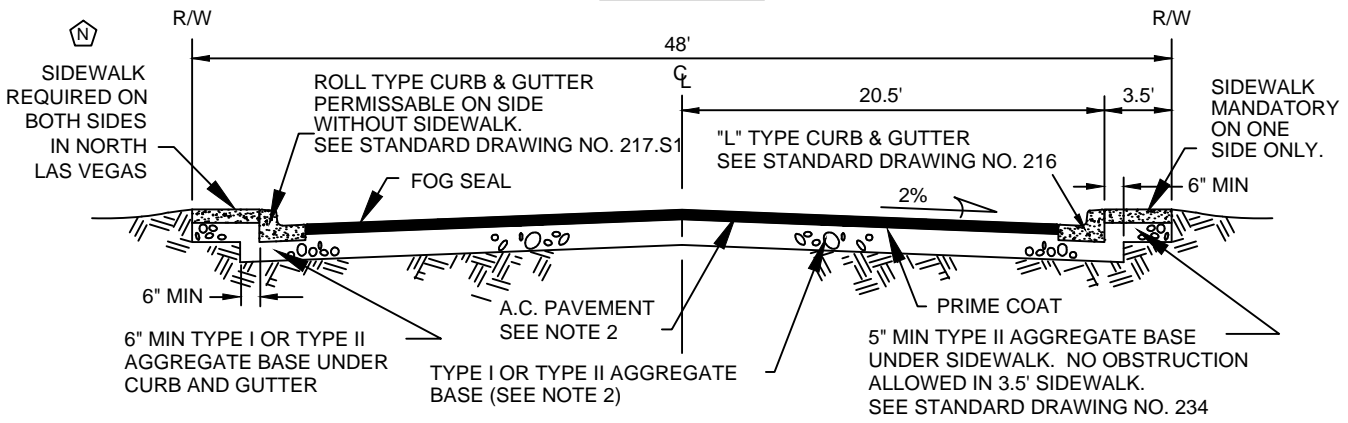
**UNIFORM STANDARD DRAWINGS  
CLARK COUNTY AREA, NEVADA**

**YEAR 2017 REVISIONS**

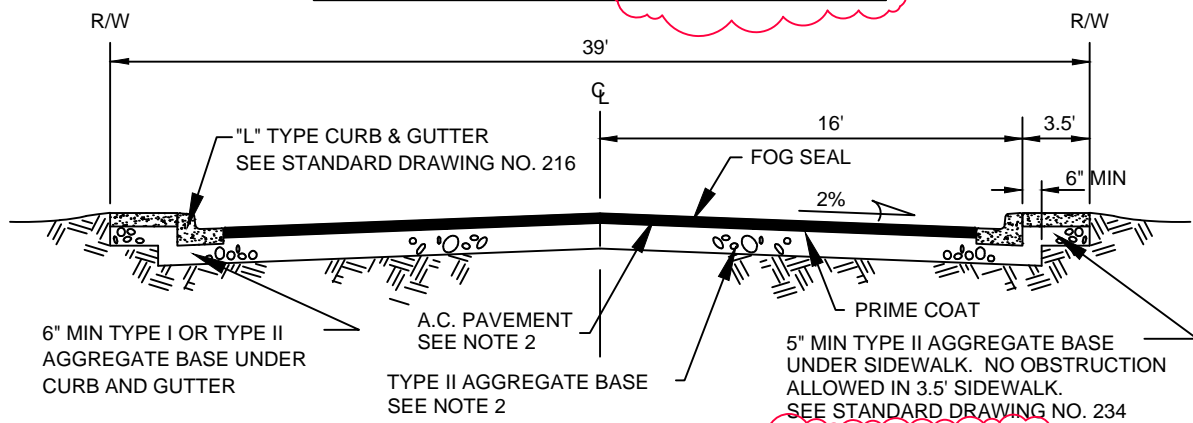
<b><u>DWG NO.</u></b>	<b><u>TITLE AND REVISIONS SUMMARY</u></b>	<b><u>EFFECTIVE DATE</u></b>
808-5	"Loading Information" – Drawing revised to change dimensions of hand holes.	7/1/2017
808-6	"Traffic Signal Pole Grounding" – Drawing revised to change dimensions of hand holes.	7/1/2017
810-1	"Type XX-B-30 Ft. Signal and Luminaire Pole (65 Ft. Thru 85 Ft. Mast Arms)" - Drawing revised to change dimensions of hand holes.	7/1/2017
810-2	"Type XX-B-30 Ft. (65 Ft. Thru 85 Ft. Mast Arms) Signal & Luminaire Pole Details" – Drawing revised to change dimensions of hand holes.	7/1/2017
810-3	"Loading Information" – Drawing revised to change dimensions of hand holes.	7/1/2017
812-1	"Type XX 20 Ft. Signal Pole (45 Ft. or less Mast Arms)" – Drawing revised to change dimensions of hand holes.	7/1/2017
812-2	"Type XX 20 Ft. (50 Ft. Thru 60 Ft. Mast Arms) Signal Pole" – Drawing revised to change dimensions of hand holes.	7/1/2017
840	"Louvered Backplate for Mast Arm Mounted Signal" – Drawing revised to add the requirement for retroreflective traffic signal backplates.	7/1/2017
841	"Louvered Backplate for Pole Mounted Signal" – Drawing revised to add the requirement for retroreflective traffic signal backplates.	7/1/2017
842.1	"Louvered Backplate for 5 Section Signal Head" – Drawing revised to add the requirement for retroreflective traffic signal backplates.	7/1/2017



**RESIDENTIAL TWO-WAY LOCAL OR CUL-DE-SAC  
(OPTION "A")**



**RESIDENTIAL TWO-WAY LOCAL CUL-DE-SAC (OPTION "B")  
(NOT ALLOWED IN CLV OR CLARK COUNTY)**

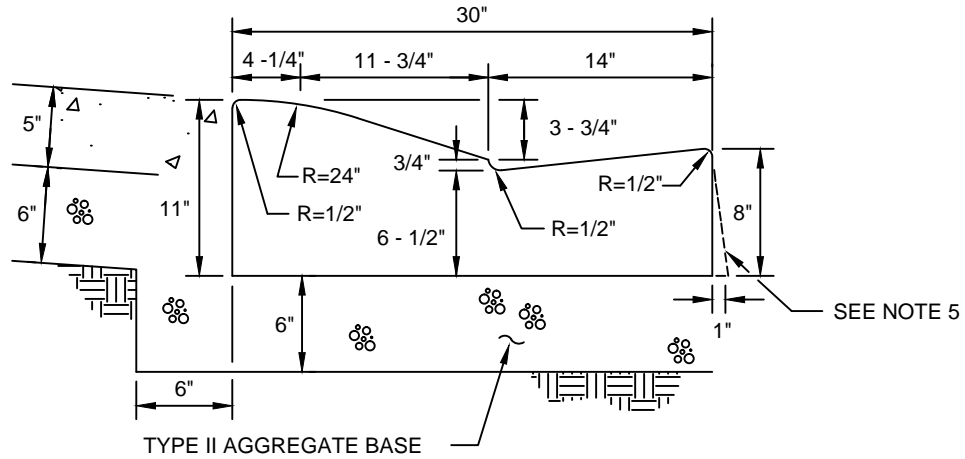


**RESIDENTIAL ONE-WAY (NOT ALLOWED IN CLV OR CLARK COUNTY)**

**NOTES:**

1. FINAL A.C. PAVEMENT SURFACE SHALL BE 1/4" MAXIMUM ABOVE LIP OF GUTTER. PAVEMENT SHALL BE FLUSH WITH LIP AT SIDEWALK RAMPS.
2. STRUCTURAL SECTION SHALL BE IN ACCORDANCE WITH STANDARD SPECIFICATION SECTION 401 AND STANDARD DRAWING NO. 200.1.
3. RESIDENTIAL ONE-WAY STREET SHALL NOT EXCEED ONE THOUSAND FEET OR TWENTY RESIDENTIAL LOTS IN LENGTH WHICHEVER IS LESS.

		AGENCY APPROVED	C	L	N
SPECIFICATION REFERENCE		UNIFORM STANDARD DRAWINGS CLARK COUNTY AREA			
302	AGGREGATE BASE	SUPPLEMENTAL DRAWING			
401	BITUMINOUS PAVEMENT	LOCAL RESIDENTIAL URBAN AREA STREET SECTIONS			
406	PRIME COAT				
407	FOG SEAL				
501	CONCRETE				
		DATE XX-XX-XX	DWG. NO.	206.S1	



NOTES:

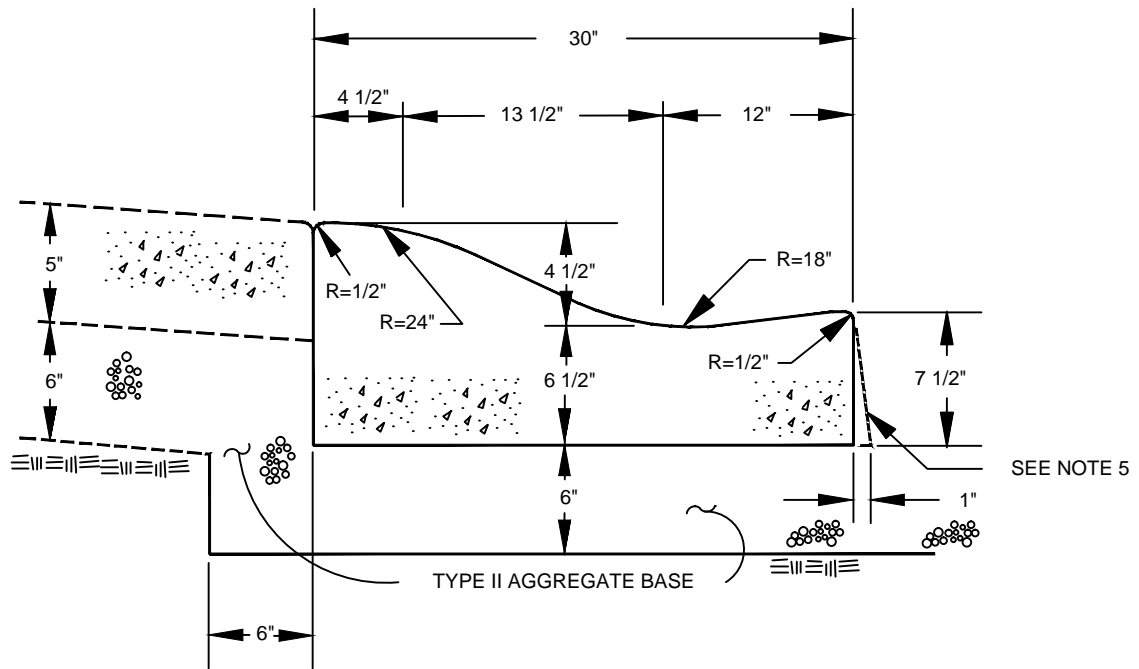
1. USE OF ROLL CURB MAY BE RESTRICTED BY SURFACE DRAINAGE CONSIDERATIONS.
2. SIDEWALK CONSTRUCTED CONTIGUOUS TO ROLL CURB SHALL BE 5 INCHES THICK (MIN.).
3. ALL CURB FLOW LINES SHALL BE WATER TESTED. ANY CURB THAT DOES NOT FLOW SHALL BE REMOVED AND REPLACED AS DIRECTED BY THE CITY OF NORTH LAS VEGAS PERMITTING AGENCY AT THE SOLE EXPENSE OF THE CONTRACTOR.
4. CONSTRUCT 1/2" EXPANSION JOINT AT ALL COLD JOINTS, AT BEGINNING AND END OF CURB RETURNS, AND AT 300 FT. MAX. INTERVALS FOR EXTRUDED CURB AND 30 FT. MAX. INTERVALS FOR FORMED CURB. WEAKENED PLANE JOINTS SHALL BE FORMED AT THE REMAINING 15 FT. INTERVALS. SEE STD. DWG. NO. 234 FOR JOINT DETAILS.
5. ONE INCH BATTER AT CURB FACE IS OPTIONAL.

6. NO UTILITY BOXES AND COVERS ADJACENT TO R-TYPE 30 INCH MODIFIED ROLL CURB AND GUTTER RESIDENTIAL AREA SHALL BE ALLOWED AT DRIVEWAY LOCATIONS.

**B** 7. BOULDER CITY ENGINEER APPROVAL REQUIRED FOR USE OF 30 INCH MODIFIED CURB AND GUTTER RESIDENTIAL AREA .

8. IF ROLL CURB IS APPROVED FOR OTHER AREAS-LOCATIONS THAT ARE SUBJECTED TO REGULAR TRAFFIC, THEN ALL UTILITY BOXES AND COVERS ADJACENT TO ROLL CURB SHALL MEET HS-20-H20-44 FOR STEEL BOXES AND ANSI/SCTE 77-2007 (TIER-22) FOR FIBERGLASS POLYMER CONCRETE BOXES RATED "TRAFFIC BEARING" TYPE.

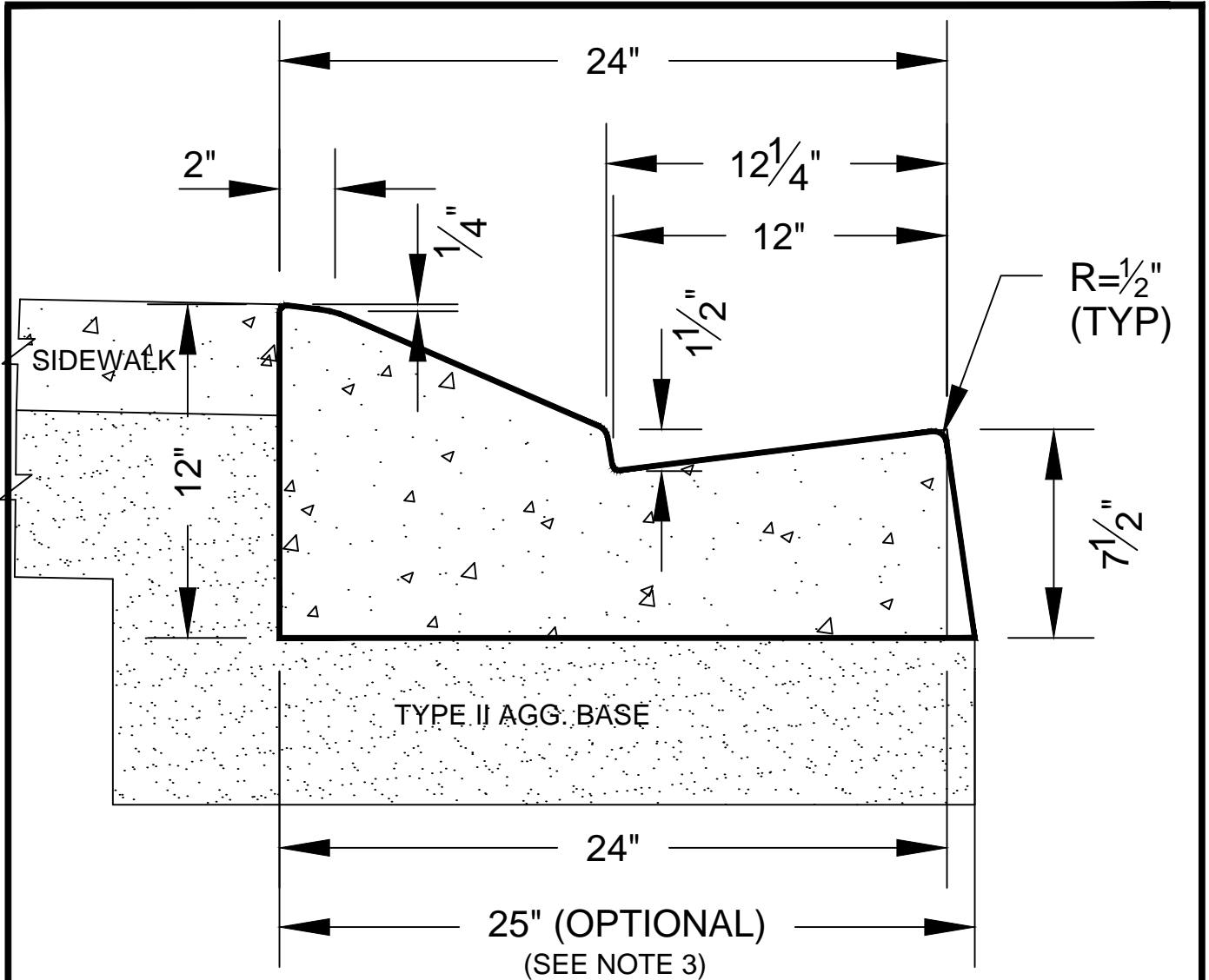
		AGENCY APPROVED	<b>B</b>	<b>C</b>	H	L	M	N
SPECIFICATION REFERENCE		UNIFORM STANDARD DRAWINGS CLARK COUNTY AREA						
320	AGGREGATE BASE	<del>SUPPLEMENTAL DRAWING</del>						
501	CONCRETE	30 INCH MODIFIED ROLL CURB AND GUTTER RESIDENTIAL AREA <b>NEW DRAWING</b>						
502	CONCRETE STRUCTURES							
707	JOINT MATERIAL							
		DATE XX-XX-XX	DWG. NO. 217.1-S1					



NOTES:

1. USE OF ROLL CURB MAY BE RESTRICTED BY SURFACE DRAINAGE CONSIDERATIONS.
2. SIDEWALK CONSTRUCTED CONTIGUOUS TO ROLL CURB SHALL BE 5 INCHES THICK (MIN).
3. WHERE LONGITUDINAL SLOPE IS LESS THAN 0.4% THE FLOW LINE SHALL BE WATER TESTED.
4. CONSTRUCT 1/2" EXPANSION JOINT AT ALL COLD JOINTS, AT BEGINNING AND END OF CURB RETURNS, AND AT 300 FT. MAX. INTERVALS FOR EXTRUDED CURB AND 30 FT. MAX. INTERVALS FOR FORMED CURB. WEAKENED PLANE JOINTS SHALL BE FORMED AT THE REMAINING 15 FT. INTERVALS. SEE STD. DWG. NO. 234 FOR JOINT DETAILS.
5. ONE INCH BATTER AT CURB FACE IS OPTIONAL.
- Ⓕ 6. CITY OF LAS VEGAS COUNCIL APPROVAL REQUIRED FOR USE OF 30" ROLL CURB IN THE CITY OF LAS VEGAS.
- Ⓖ 7. IN NORTH LAS VEGAS, ROLL CURBS ARE PROHIBITED IN AREAS WHERE FLOW LINE GRADIENT IS LESS THAN 0.8% UNLESS OTHERWISE APPROVED BY CITY ENGINEER.
- ~~8. ALL UTILITY BOXES AND COVERS ADJACENT TO ROLL CURB SHALL BE HS-20 RATED "TRAFFIC BEARING" TYPE~~
8. NO UTILITY BOXES AND COVERS ADJACENT TO R-TYPE 30 INCH MODIFIED ROLL CURB AND GUTTER RESIDENTIAL AREA SHALL BE ALLOWED AT DRIVEWAY LOCATIONS.
9. IF ROLL CURB IS APPROVED FOR OTHER AREAS LOCATIONS THAT ARE SUBJECTED TO REGULAR TRAFFIC, THEN ALL UTILITY BOXES AND COVERS ADJACENT TO R-TYPE CURB SHALL BE MEET HS-20-H20-44 FOR STEEL BOXES AND ANSI/SCTE 77-2007 (TIER-22) FOR FIBERGLASS POLYMER CONCRETE BOXES RATED "TRAFFIC BEARING" TYPE.

		AGENCY APPROVED		C	H	Ⓕ		Ⓖ
SPECIFICATION REFERENCE		UNIFORM STANDARD DRAWINGS CLARK COUNTY AREA						
320	AGGREGATE BASE	SUPPLEMENTAL DRAWING						
501	CONCRETE	30 INCH ROLL CURB RESIDENTIAL AREA						
502	CONCRETE STRUCTURES							
707	JOINT MATERIAL							
		DATE XX-XX-XX	DWG. NO.	217.2.S1				

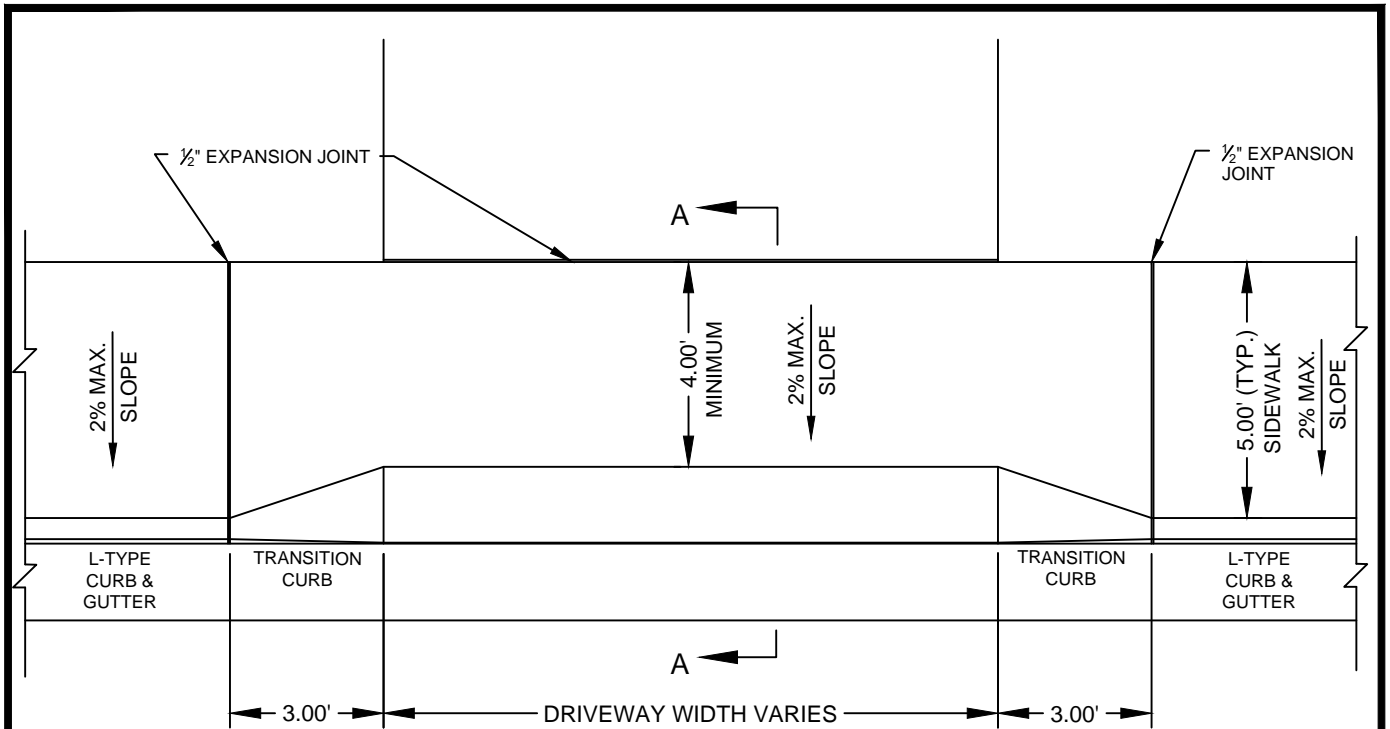


**NOTES:**

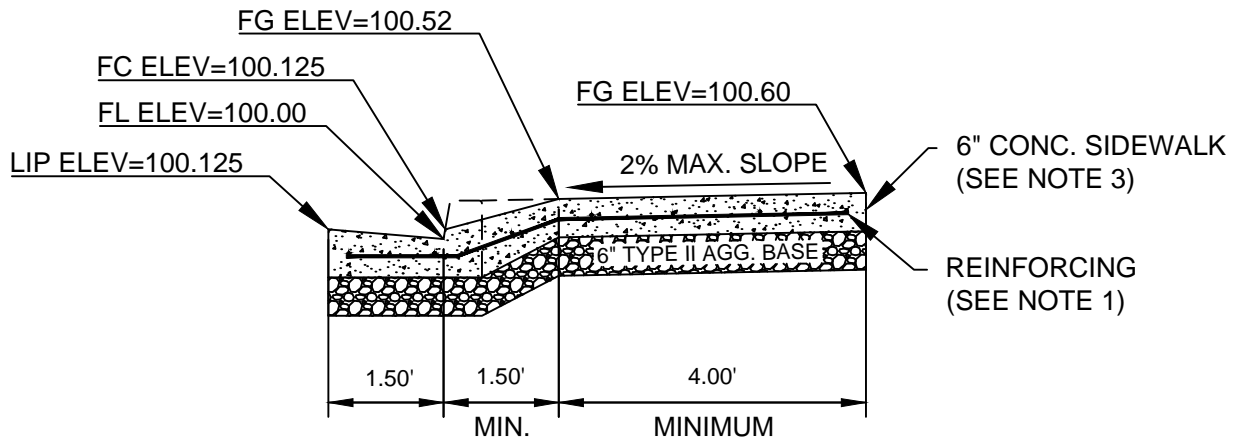
1. WHERE LONGITUDINAL SLOPE IS LESS THAN 0.4% THE FLOW LINE SHALL BE WATER TESTED.
2. CONSTRUCT 1/2" EXPANSION JOINT AT ALL COLD JOINTS, AT BEGINNING AND END OF CURB RETURNS, AND AT 300 FT. MAX. INTERVALS FOR EXTRUDED CURB AND 30 FT. MAX. INTERVALS FOR FORMED CURB. WEAKENED PLANE JOINTS SHALL BE FORMED AT THE REMAINING 15 FT. INTERVALS. SEE STD. DWG. NO. 234 FOR JOINT DETAILS.
3. ONE INCH BATTER AT GUTTER FACE IS OPTIONAL.
4. NO UTILITY BOXES AND COVERS ADJACENT TO R-TYPE CURB SHALL BE ALLOWED AT DRIVEWAY LOCATIONS.
5. R-TYPE CURB AND GUTTER IS ONLY ALLOWED AT DRIVEWAY LOCATIONS UNLESS APPROVED BY THE AGENCY IN WRITING. (SEE STANDARD DRAWING NO. 223).

6. IF R-TYPE CURB IS APPROVED FOR OTHER AREAS LOCATIONS THAT ARE SUBJECTED TO REGULAR TRAFFIC, THEN ALL UTILITY BOXES AND COVERS ADJACENT TO R-TYPE CURB SHALL BE MEET HS-20-H20-44 FOR STEEL BOXES AND ANSI/SCTE 77-2007 (TIER-22) FOR FIBERGLASS POLYMER CONCRETE BOXES RATED "TRAFFIC BEARING" TYPE.

SPECIFICATION REFERENCE		AGENCY APPROVED	B	<input checked="" type="checkbox"/>	H	L	M	N
320	AGGREGATE BASE	UNIFORM STANDARD DRAWINGS CLARK COUNTY AREA						
501	CONCRETE	<b>SUPPLEMENTAL DRAWING</b>						
502	CONCRETE STRUCTURES	RESIDENTIAL CURB & GUTTER R-TYPE						
707	JOINT MATERIAL							
		DATE XX-XX-XX	DWG. NO.		217.3.S1			



**PLAN VIEW**



**SECTION A-A**

**NOTES:**

NOTE: ELEVATIONS SHOWN ARE TYPICAL

1. NO. 4 BARS AT 16" O.C. BOTH WAYS EXTENDING INTO GUTTER. NO. 4 BARS SHALL BE PLACED 3" ABOVE BOTTOM OF CONCRETE SUPPORTED BY NON-FERROUS CHAIRS APPROVED BY THE ENGINEER.
2. WHEN CONSTRUCTING DRIVEWAY WHERE CURB AND GUTTER EXISTS, COMPLETELY REMOVE INTERFERING PORTIONS OF EXISTING CURB AND GUTTER. DRIVEWAY SHALL BE MONOLITHIC TO A.C. LINE.
3. DRIVEWAY THICKNESS FOR INDUSTRIAL USE SHALL BE 8" MIN.
4. WEAKENED PLANE JOINTS SHALL BE EQUALLY SPACED AT 15' MAX. INTERVALS, SEE STANDARD DRAWING NO. 234.

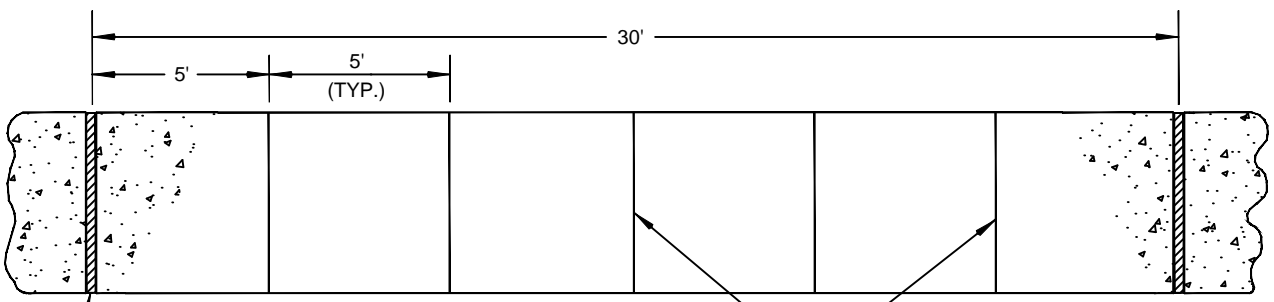
5. NO UTILITY BOXES AND COVERS ADJACENT TO R-TYPE CURB SHALL BE ALLOWED AT DRIVEWAY LOCATIONS.

AGENCY APPROVED	B	C	H	L	M	N
-----------------	---	---	---	---	---	---

SPECIFICATION REFERENCE	
302	AGGREGATE BASE
501	CONCRETE
502	CONCRETE STRUCTURES
505	REINFORCING STEEL
707	JOINT MATERIAL

UNIFORM STANDARD DRAWINGS CLARK COUNTY AREA	
COMMERCIAL AND INDUSTRIAL DRIVEWAY (OPTION A)	

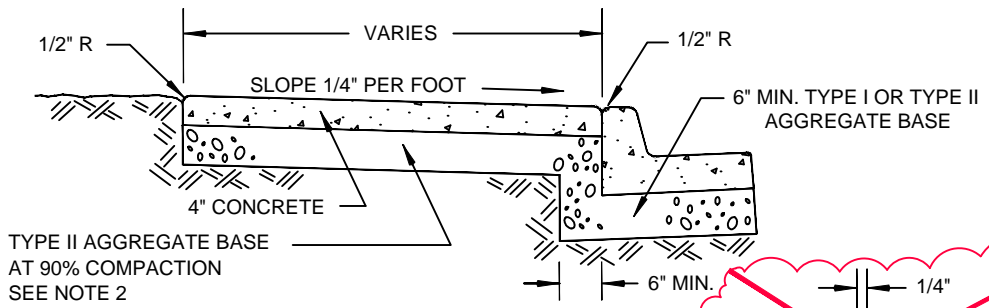
DATE XX-XX-XX	DWG. NO.	224
---------------	----------	-----



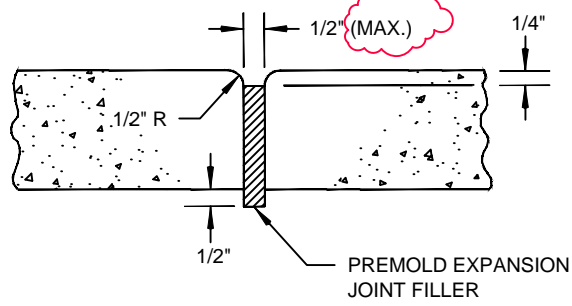
1/2" EXPANSION JOINT AT 30' INTERVALS, AT COLD JOINTS AND AT BEGINNING AND END OF RETURN. EXPANSION JOINTS TO MATCH LOCATION MATCH LOCATION OF CURB AND GUTTER EXPANSION JOINT.

PLAN

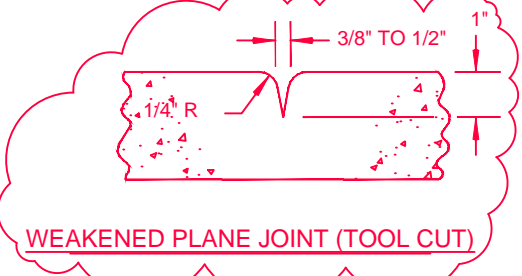
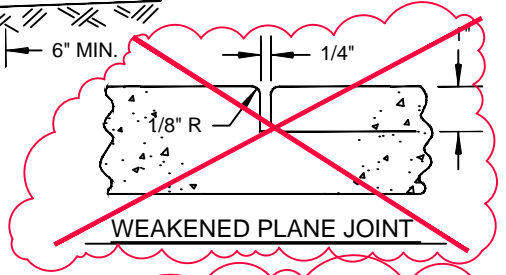
WEAKENED PLANE JOINT



TYPICAL SECTION



EXPANSION JOINT

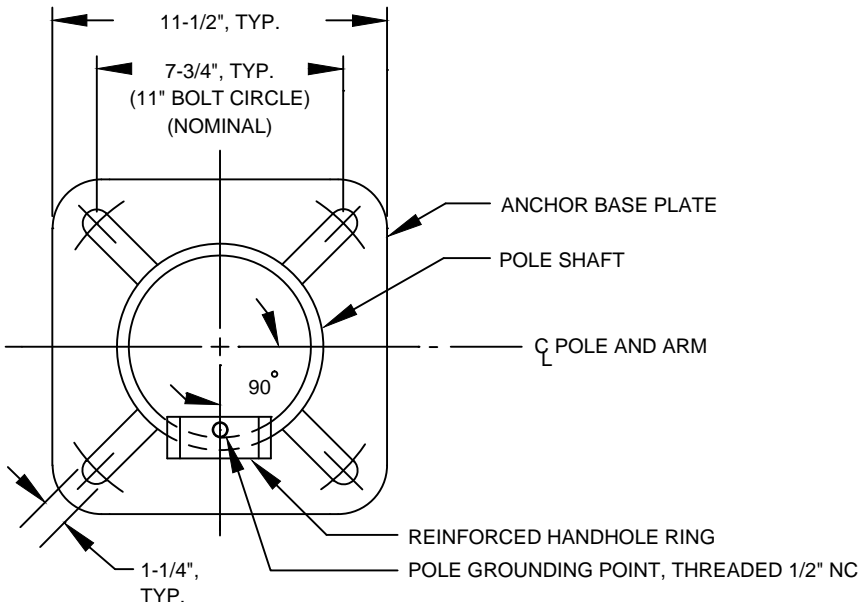
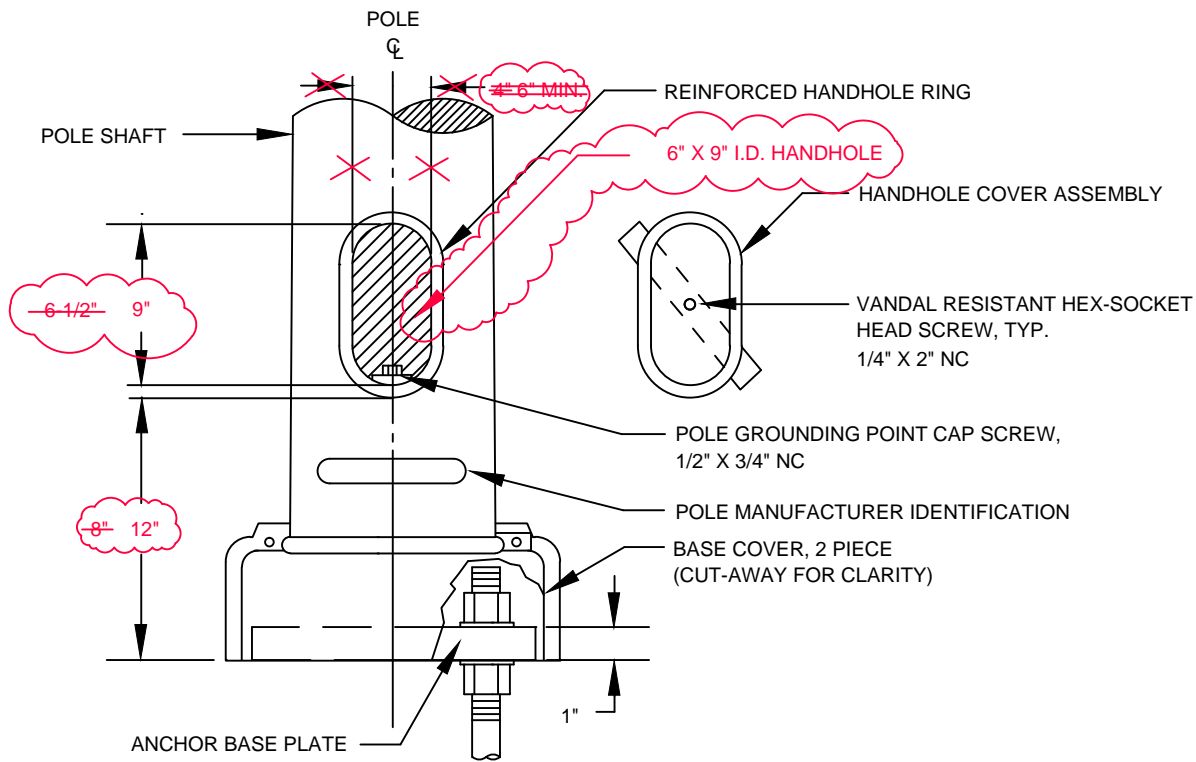


NOTES:

1. ON ALL CURB RETURNS A 1/2" EXPANSION JOINT SHALL BE CONSTRUCTED BETWEEN THE BACK OF CURB AND THE SIDEWALK FOR THE ENTIRE LENGTH OF THE RETURN.
2. THE TYPE II AGGREGATE BASE THICKNESS IS SHOWN ON THE TYPICAL SECTION DRAWINGS 202 - 207.
3. LONGITUDINAL WEAKENED PLANE JOINT REQUIRED AT MIDPOINT OF SIDEWALK 10' OR WIDER.

		AGENCY APPROVED	B	C	H	L	M	N
SPECIFICATION REFERENCE		UNIFORM STANDARD DRAWINGS CLARK COUNTY AREA						
302	AGGREGATE BASE	SIDEWALK						
501	CONCRETE							
502	CONCRETE STRUCTURES							
707	JOINT MATERIAL							
		DATE XX-XX-XX	DWG. NO.	234				





**NOTES:**

1. SEE GENERAL NOTES STANDARD DRAWING NO. 313
2. HANDHOLE SHALL FACE AWAY FROM ONCOMING TRAFFIC.
3. HANDHOLE SIZE FOR CC AND CLV FOR STREET LIGHT POLES SHALL BE 4" X 6" I.D.

C/L

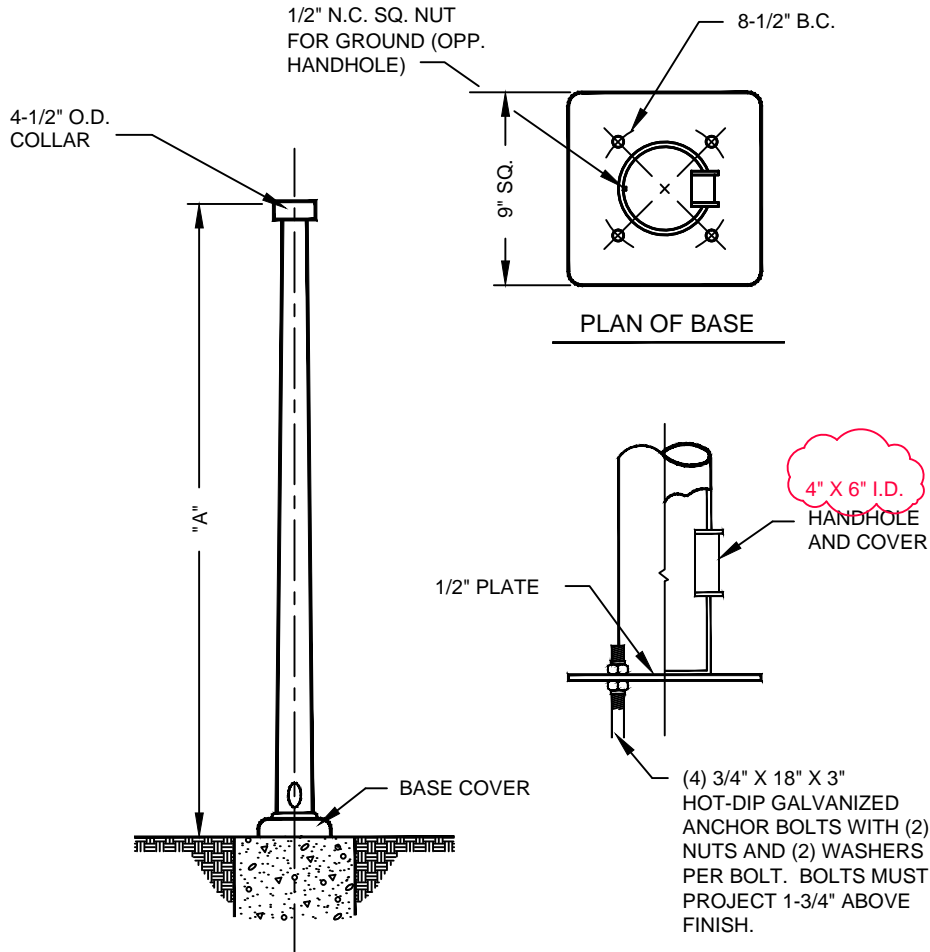
AGENCY APPROVED    B    C    H    L    M    N

SPECIFICATION REFERENCE	
506	STEEL STRUCTURES
623	TRAFFIC SIGNALS & STREETLIGHTING
715	GALVANIZING

**UNIFORM STANDARD DRAWINGS  
CLARK COUNTY AREA**

**LOWER POLE DETAILS  
FOR PIPE AND MAST ARM  
POLES**

DATE 07-01-17    DWG. NO.    319



POLE TYPE	"A" NOM.	SHAFT SIZE	
1-A	10'-0"	11 GA. 5.5" X 4.1" X 10'-0"	NEAR RIGHTS & ISL. POLES
1-B	7'-0"	11 GA. 5.5" X 4.1" X 7'-0"	PED. HEADS & BUTTON ONLY

**NOTES:**

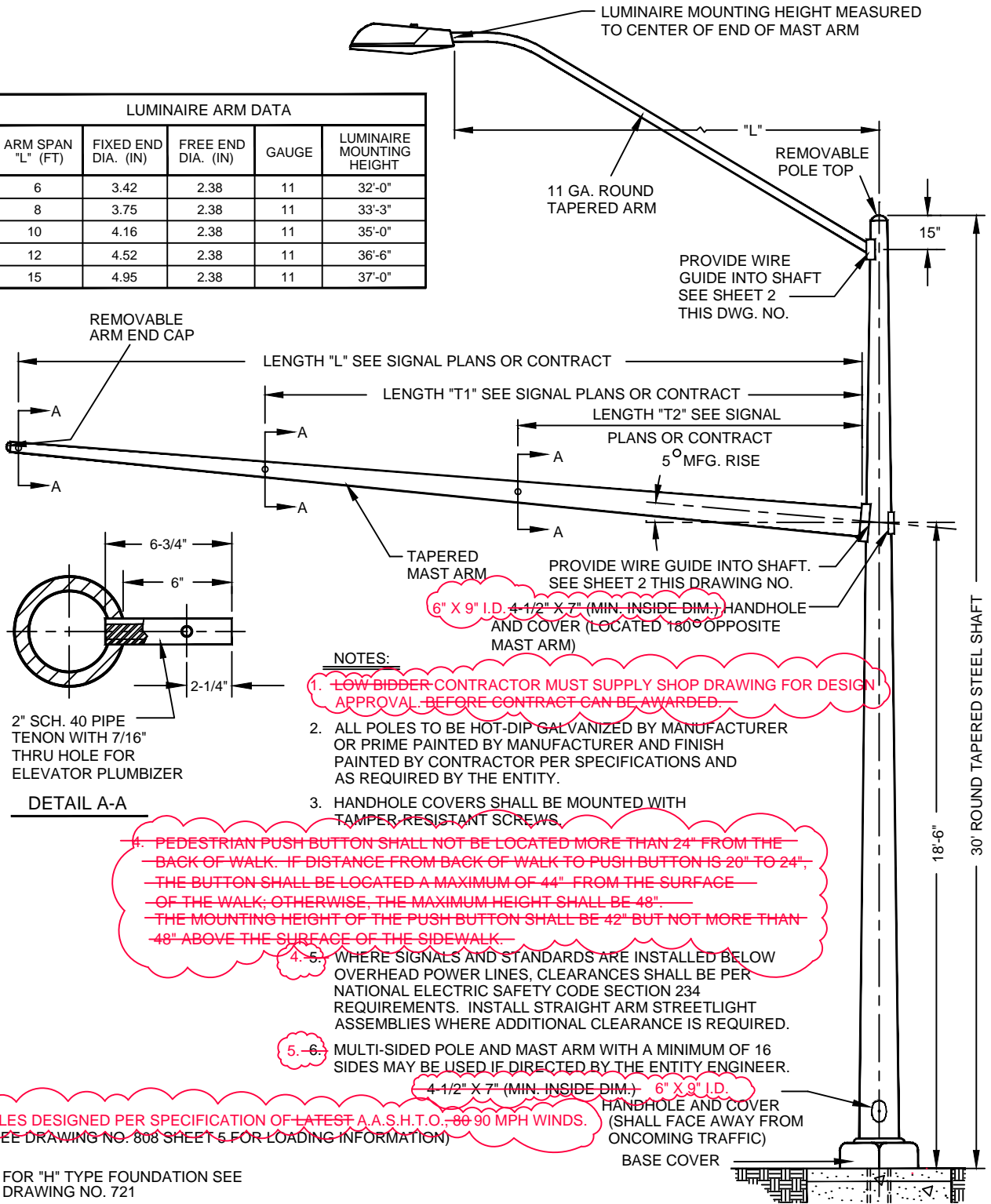
- ALL POLES TO BE HOT-DIP GALVANIZED BY MANUFACTURER OR PRIME PAINTED BY MANUFACTURER AND FINISH PAINTED BY CONTRACTOR PER SPECIFICATIONS AND AS REQUIRED BY THE ENTITY.
- HANDHOLE COVERS SHALL BE MOUNTED WITH TAMPER-RESISTANT SCREWS.
- ~~PEDESTRIAN PUSH BUTTON SHALL NOT BE LOCATED MORE THAN 24" FROM THE BACK OF WALK. IF DISTANCE FROM BACK OF WALK TO PUSH BUTTON IS 20" TO 24", THE BUTTON SHALL BE LOCATED A MAXIMUM OF 44" FROM THE SURFACE OF THE WALK; OTHERWISE, THE MAXIMUM HEIGHT SHALL BE 48". THE MOUNTING HEIGHT OF THE PUSH BUTTON SHALL BE 42" BUT NOT MORE THAN 48" ABOVE THE SURFACE OF THE SIDEWALK.~~

FOR TYPE "C" FOUNDATION SEE DRAWING NO. 717.

AGENCY APPROVED	B	C	H	L	M	N
UNIFORM STANDARD DRAWINGS CLARK COUNTY AREA						
SIGNAL STANDARD TYPE 1-A, 1-B						
DATE 07-01-17	DWG. NO.	806				

SPECIFICATION REFERENCE	

LUMINAIRE ARM DATA				
ARM SPAN "L" (FT)	FIXED END DIA. (IN)	FREE END DIA. (IN)	GAUGE	LUMINAIRE MOUNTING HEIGHT
6	3.42	2.38	11	32'-0"
8	3.75	2.38	11	33'-3"
10	4.16	2.38	11	35'-0"
12	4.52	2.38	11	36'-6"
15	4.95	2.38	11	37'-0"



**NOTES:**

1. ~~LOW BIDDER CONTRACTOR MUST SUPPLY SHOP DRAWING FOR DESIGN APPROVAL BEFORE CONTRACT CAN BE AWARDED.~~

2. ALL POLES TO BE HOT-DIP GALVANIZED BY MANUFACTURER OR PRIME PAINTED BY MANUFACTURER AND FINISH PAINTED BY CONTRACTOR PER SPECIFICATIONS AND AS REQUIRED BY THE ENTITY.

3. HANDHOLE COVERS SHALL BE MOUNTED WITH TAMPER-RESISTANT SCREWS.

4. ~~PEDESTRIAN PUSH BUTTON SHALL NOT BE LOCATED MORE THAN 24" FROM THE BACK OF WALK. IF DISTANCE FROM BACK OF WALK TO PUSH BUTTON IS 20" TO 24", THE BUTTON SHALL BE LOCATED A MAXIMUM OF 44" FROM THE SURFACE OF THE WALK; OTHERWISE, THE MAXIMUM HEIGHT SHALL BE 48". THE MOUNTING HEIGHT OF THE PUSH BUTTON SHALL BE 42" BUT NOT MORE THAN 48" ABOVE THE SURFACE OF THE SIDEWALK.~~

4. 5. WHERE SIGNALS AND STANDARDS ARE INSTALLED BELOW OVERHEAD POWER LINES, CLEARANCES SHALL BE PER NATIONAL ELECTRIC SAFETY CODE SECTION 234 REQUIREMENTS. INSTALL STRAIGHT ARM STREETLIGHT ASSEMBLIES WHERE ADDITIONAL CLEARANCE IS REQUIRED.

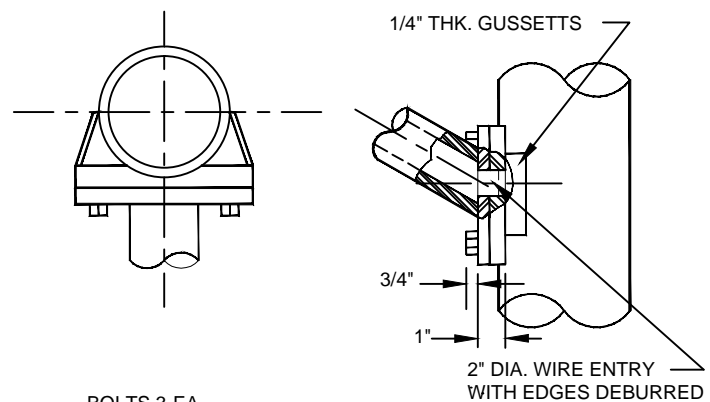
5. 6. MULTI-SIDED POLE AND MAST ARM WITH A MINIMUM OF 16 SIDES MAY BE USED IF DIRECTED BY THE ENTITY ENGINEER.

~~4-1/2" X 7" (MIN. INSIDE DIM.) 6" X 9" I.D. HANDHOLE AND COVER (SHALL FACE AWAY FROM ONCOMING TRAFFIC)~~  
**POLES DESIGNED PER SPECIFICATION OF LATEST A.A.S.H.T.O., 80-90 MPH WINDS. (SEE DRAWING NO. 808 SHEET 5 FOR LOADING INFORMATION)**

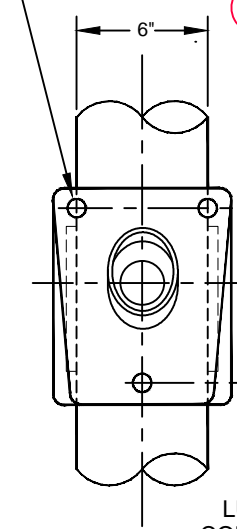
FOR "H" TYPE FOUNDATION SEE DRAWING NO. 721

AGENCY APPROVED	B	C	H	L	M	N
UNIFORM STANDARD DRAWINGS CLARK COUNTY AREA						
TYPE XX-30 FT. SIGNAL & LUMINAIRE POLE (45 FT. OR LESS MAST ARMS)						
DATE 07-01-17	DWG. NO.	808	SHEET	1 OF 6		

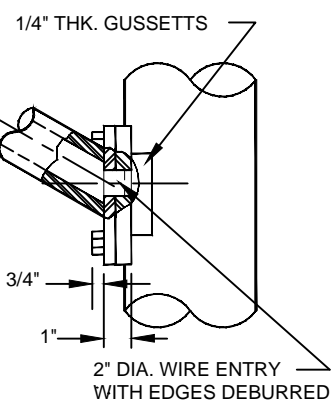
SPECIFICATION REFERENCE	



BOLTS 3-EA.  
3/4" x 1-3/4"  
A325-X



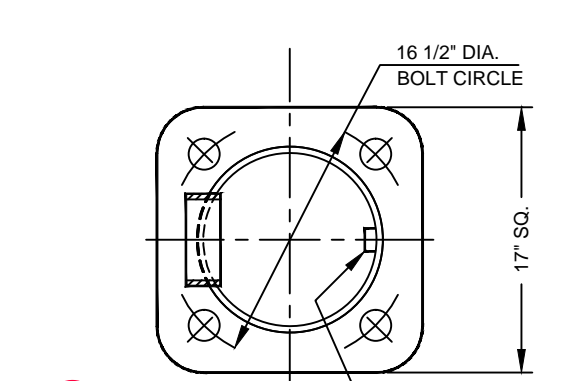
LUMINAIRE ARM  
CONNECTION DETAIL



2" DIA. WIRE ENTRY  
WITH EDGES DEBURRED

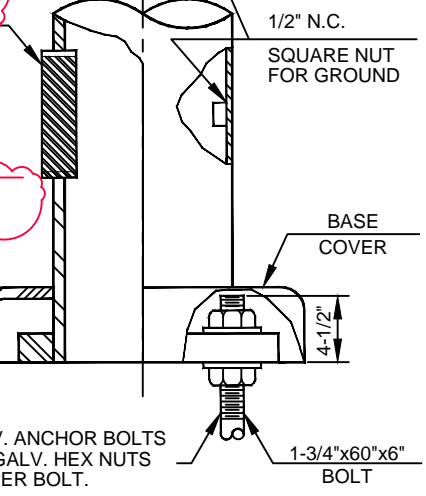
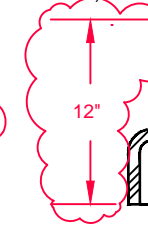
NOTES:

1. ~~LOW BIDDER CONTRACTOR MUST SUPPLY SHOP DRAWING FOR DESIGN APPROVAL. BEFORE CONTRACT CAN BE AWARDED.~~
2. ALL POLES TO BE HOT-DIP GALVANIZED BY MANUFACTURER OR PRIME PAINTED BY MANUFACTURER AND FINISH PAINTED BY CONTRACTOR PER SPECIFICATIONS AND AS REQUIRED BY THE ENTITY.
3. HANDHOLE COVERS SHALL BE MOUNTED WITH TAMPER-RESISTANT SCREWS.
4. ~~PEDESTRIAN PUSH BUTTON SHALL NOT BE LOCATED MORE THAN 24" FROM THE BACK OF WALK. IF DISTANCE FROM BACK OF WALK TO PUSH BUTTON IS 20" TO 24", THE MOUNTING HEIGHT OF THE PUSH BUTTON SHALL BE 42" BUT NOT MORE THAN 48" ABOVE THE SURFACE OF THE SIDEWALK.~~
- 4-5. WHERE SIGNALS AND STANDARDS ARE INSTALLED BELOW OVERHEAD POWER LINES, CLEARANCES SHALL BE PER NATIONAL ELECTRIC SAFETY CODE SECTION 234 REQUIREMENTS. INSTALL STRAIGHT ARM STREETLIGHT ASSEMBLIES WHERE ADDITIONAL CLEARANCE IS REQUIRED.
- 5-6. MULTI-SIDED POLE AND MAST ARM WITH A MINIMUM OF 16 SIDES MAY BE USED IF DIRECTED BY THE ENTITY ENGINEER.



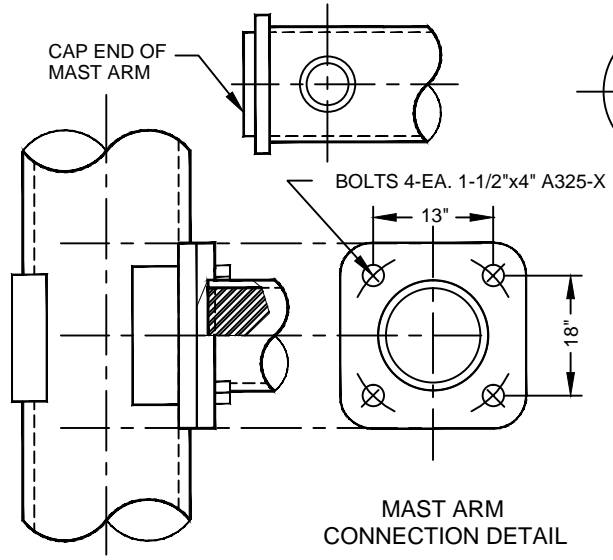
6" X 9" I.D.  
4-1/2" X 7" MIN.  
(INSIDE DIM.)

HANDHOLE  
AND COVER  
(SHALL FACE  
AWAY FROM  
ONCOMING  
TRAFFIC)

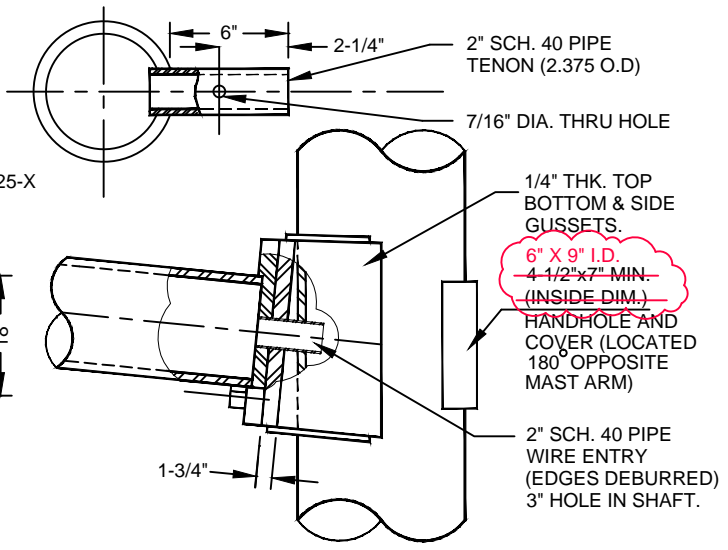


HOT-DIP GALV. ANCHOR BOLTS  
W/2 HOT-DIP GALV. HEX NUTS  
& WASHERS PER BOLT.

POLE MOUNTING DETAIL



MAST ARM  
CONNECTION DETAIL



AGENCY APPROVED	B	C	H	L	M	N
-----------------	---	---	---	---	---	---

SPECIFICATION REFERENCE	

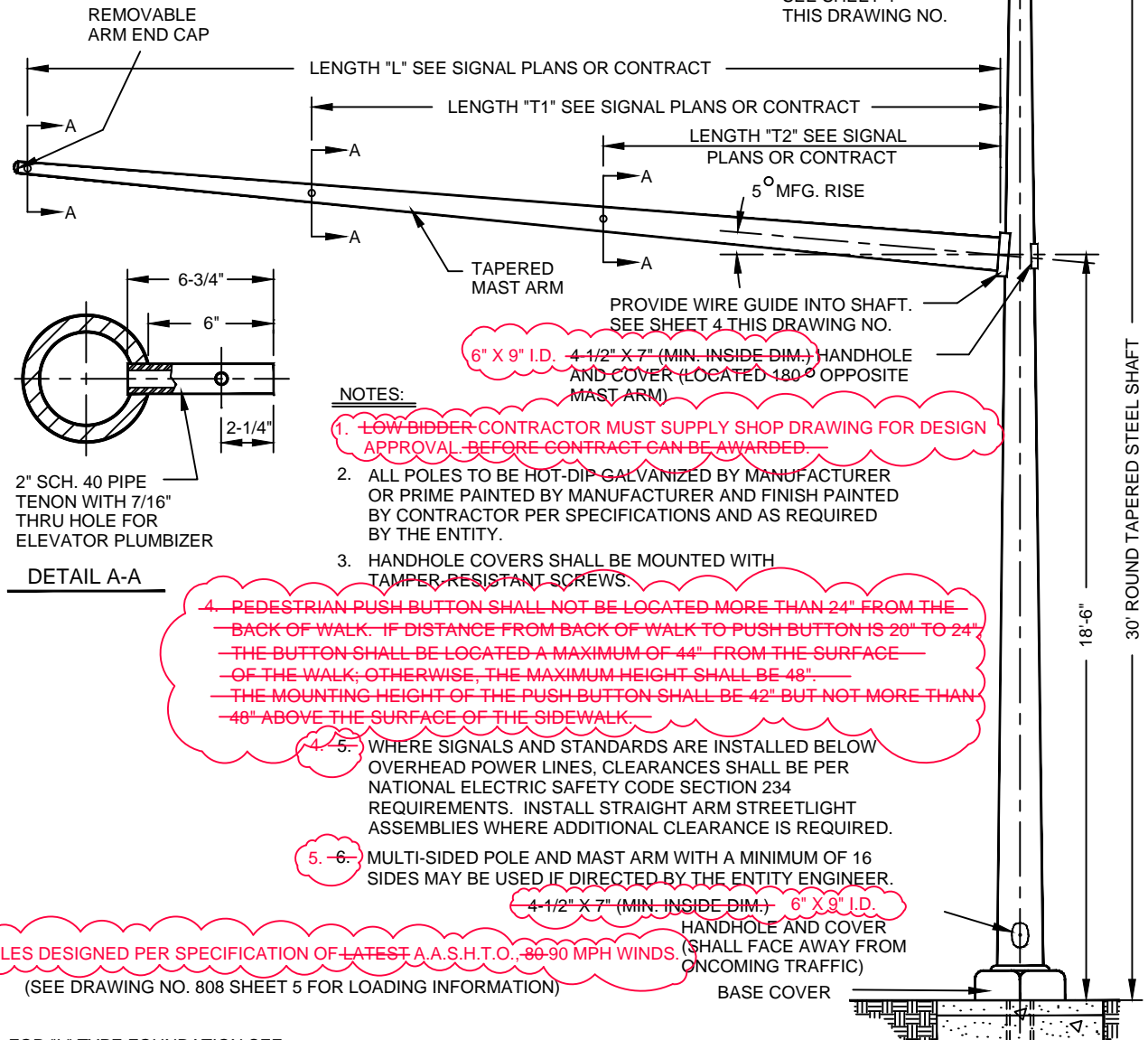
UNIFORM STANDARD DRAWINGS  
CLARK COUNTY AREA

TYPE XX - 30 FT.  
SIGNAL & LUMINAIRE POLE  
DETAILS

DATE 07-01-17	DWG. NO.	808	SHEET	2 OF 6
---------------	----------	-----	-------	--------

LUMINAIRE ARM DATA				
ARM SPAN "L" (FT)	FIXED END DIA. (IN)	FREE END DIA. (IN)	GAUGE	LUMINAIRE MOUNTING HEIGHT
6	3.42	2.38	11	32'-0"
8	3.75	2.38	11	33'-3"
10	4.16	2.38	11	35'-0"
12	4.52	2.38	11	36'-6"
15	4.95	2.38	11	37'-0"

LUMINAIRE MOUNTING HEIGHT MEASURED TO CENTER OF END OF MAST ARM



**NOTES:**

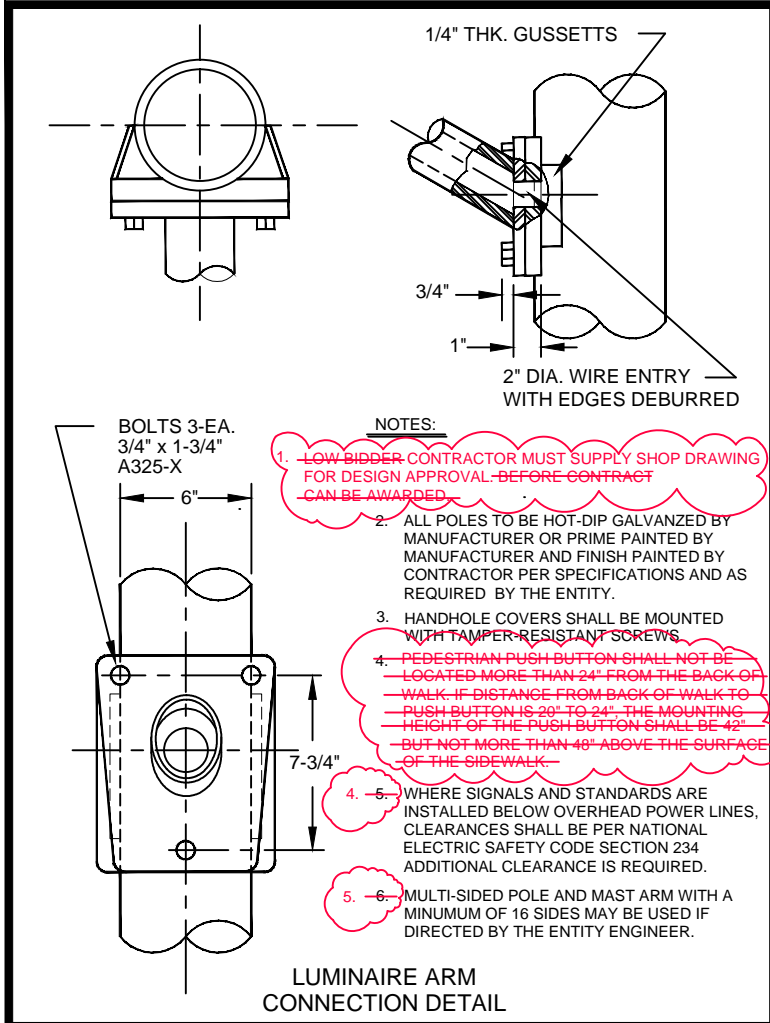
1. ~~LOW BIDDER CONTRACTOR MUST SUPPLY SHOP DRAWING FOR DESIGN APPROVAL BEFORE CONTRACT CAN BE AWARDED.~~
2. ALL POLES TO BE HOT-DIP GALVANIZED BY MANUFACTURER OR PRIME PAINTED BY MANUFACTURER AND FINISH PAINTED BY CONTRACTOR PER SPECIFICATIONS AND AS REQUIRED BY THE ENTITY.
3. HANDHOLE COVERS SHALL BE MOUNTED WITH TAMPER RESISTANT SCREWS.
4. ~~PEDESTRIAN PUSH BUTTON SHALL NOT BE LOCATED MORE THAN 24" FROM THE BACK OF WALK. IF DISTANCE FROM BACK OF WALK TO PUSH BUTTON IS 20" TO 24" THE BUTTON SHALL BE LOCATED A MAXIMUM OF 44" FROM THE SURFACE OF THE WALK; OTHERWISE, THE MAXIMUM HEIGHT SHALL BE 48". THE MOUNTING HEIGHT OF THE PUSH BUTTON SHALL BE 42" BUT NOT MORE THAN 48" ABOVE THE SURFACE OF THE SIDEWALK.~~
4. 5. WHERE SIGNALS AND STANDARDS ARE INSTALLED BELOW OVERHEAD POWER LINES, CLEARANCES SHALL BE PER NATIONAL ELECTRIC SAFETY CODE SECTION 234 REQUIREMENTS. INSTALL STRAIGHT ARM STREETLIGHT ASSEMBLIES WHERE ADDITIONAL CLEARANCE IS REQUIRED.
5. ~~6.~~ MULTI-SIDED POLE AND MAST ARM WITH A MINIMUM OF 16 SIDES MAY BE USED IF DIRECTED BY THE ENTITY ENGINEER.

POLES DESIGNED PER SPECIFICATION OF LATEST A.A.S.H.T.O., 89-90 MPH WINDS.  
(SEE DRAWING NO. 808 SHEET 5 FOR LOADING INFORMATION)

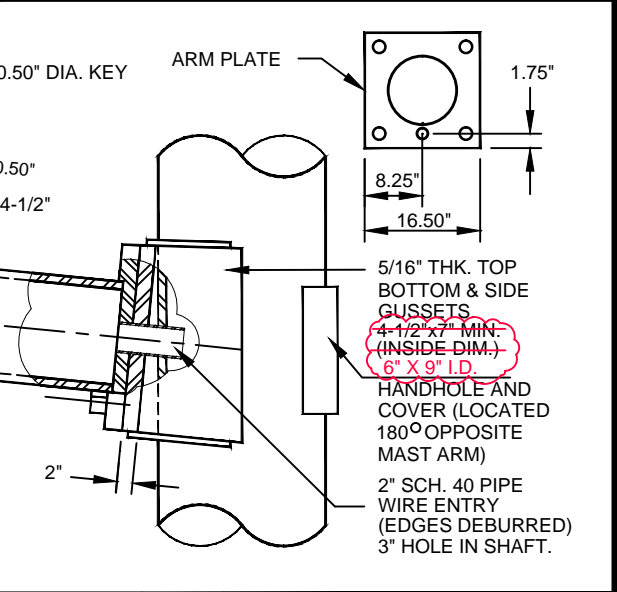
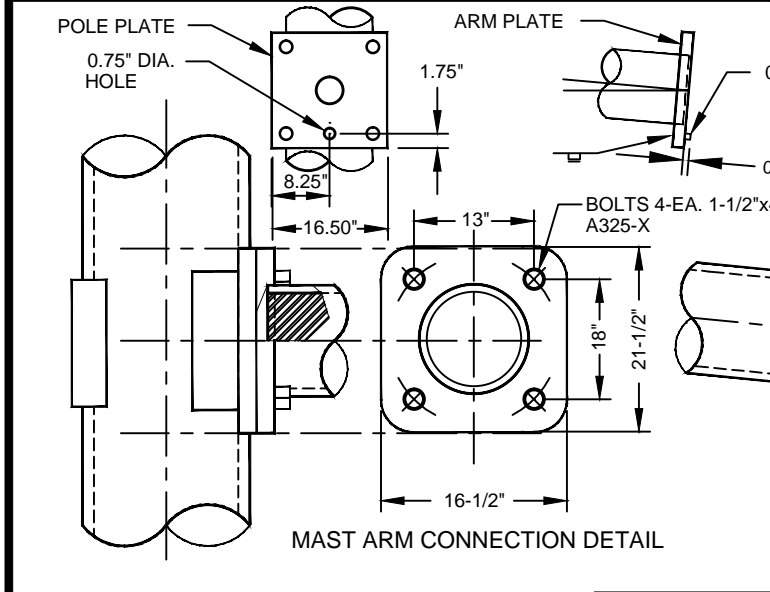
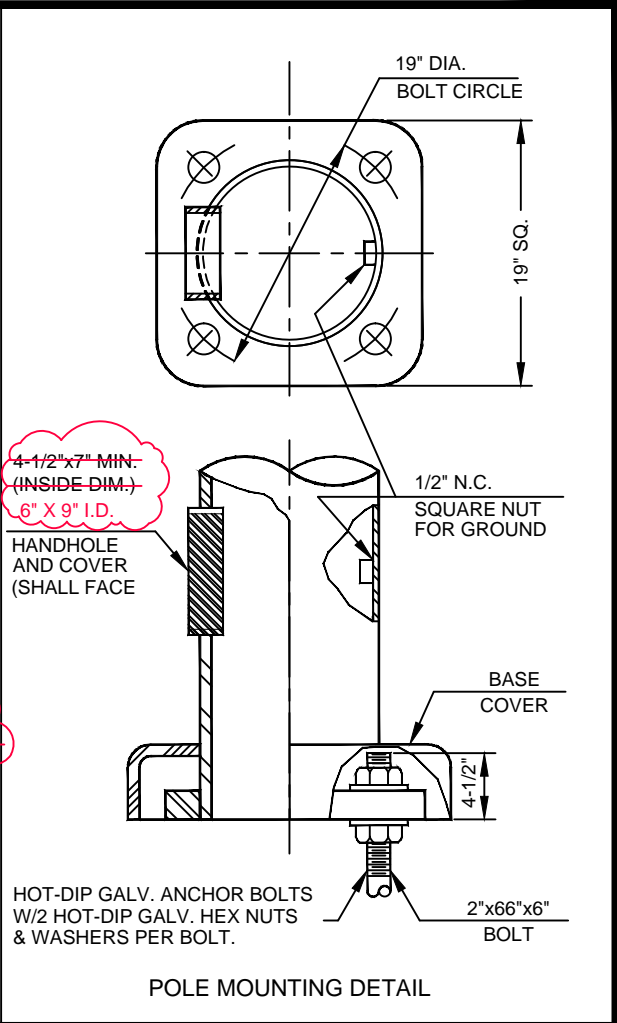
FOR "L" TYPE FOUNDATION SEE DRAWING NO. 722

AGENCY APPROVED	B	C	H	L	M	N
UNIFORM STANDARD DRAWINGS CLARK COUNTY AREA						
TYPE XX - A - 30 FT. SIGNAL & LUMINAIRE POLE (50 FT. THRU 60 FT. MAST ARMS)						
DATE 07-01-17	DWG. NO.	808	SHEET	3 OF 6		

SPECIFICATION REFERENCE	



- NOTES:**
- ~~1. LOW BIDDER CONTRACTOR MUST SUPPLY SHOP DRAWING FOR DESIGN APPROVAL. BEFORE CONTRACT CAN BE AWARDED.~~
  - ALL POLES TO BE HOT-DIP GALVANIZED BY MANUFACTURER OR PRIME PAINTED BY MANUFACTURER AND FINISH PAINTED BY CONTRACTOR PER SPECIFICATIONS AND AS REQUIRED BY THE ENTITY.
  - HANDHOLE COVERS SHALL BE MOUNTED WITH TAMPER-RESISTANT SCREWS.
  - ~~4. PEDESTRIAN PUSH BUTTON SHALL NOT BE LOCATED MORE THAN 24" FROM THE BACK OF WALK. IF DISTANCE FROM BACK OF WALK TO PUSH BUTTON IS 20" TO 24", THE MOUNTING HEIGHT OF THE PUSH BUTTON SHALL BE 42" BUT NOT MORE THAN 48" ABOVE THE SURFACE OF THE SIDEWALK.~~
  - ~~5. WHERE SIGNALS AND STANDARDS ARE INSTALLED BELOW OVERHEAD POWER LINES, CLEARANCES SHALL BE PER NATIONAL ELECTRIC SAFETY CODE SECTION 234 ADDITIONAL CLEARANCE IS REQUIRED.~~
  - ~~6. MULTI-SIDED POLE AND MAST ARM WITH A MINIMUM OF 16 SIDES MAY BE USED IF DIRECTED BY THE ENTITY ENGINEER.~~



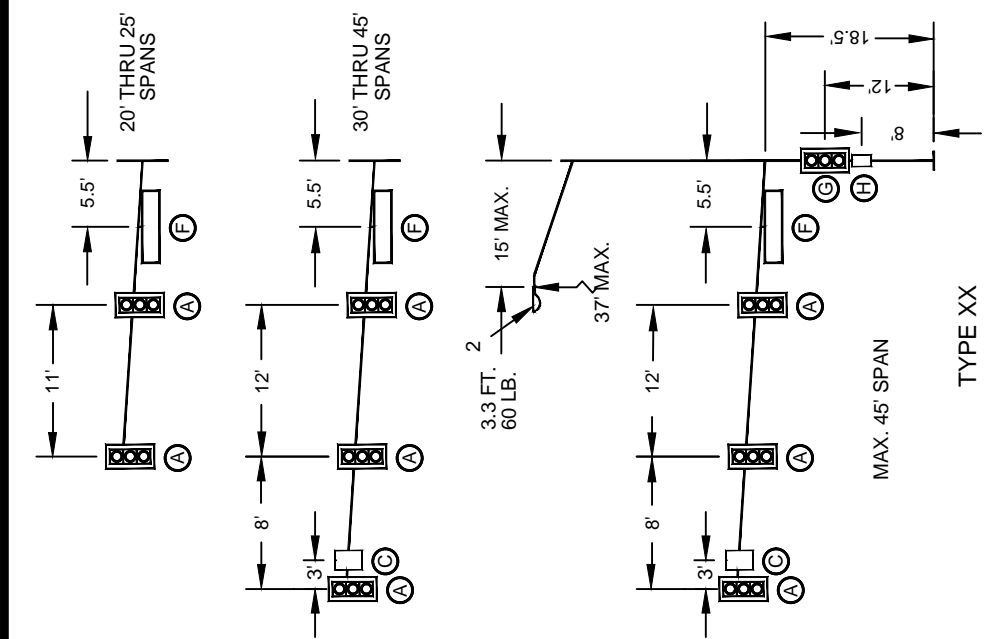
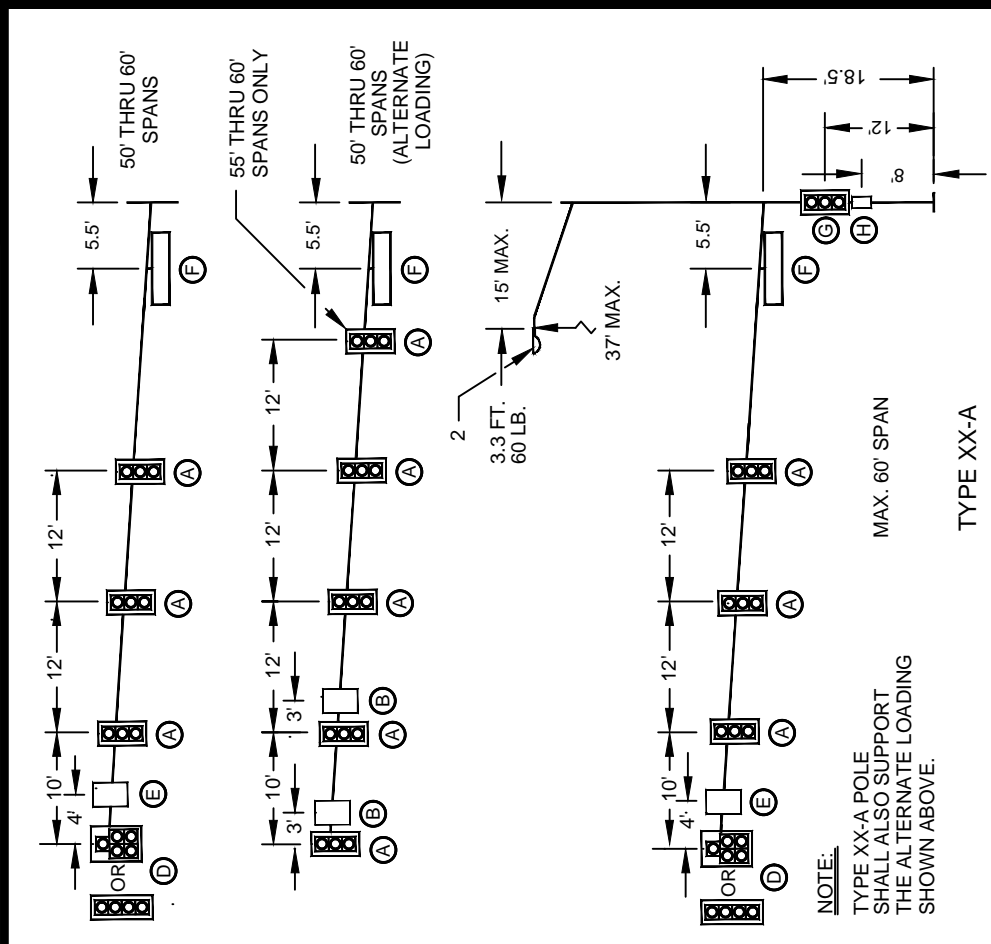
AGENCY APPROVED	B	C	H	L	M	N
-----------------	---	---	---	---	---	---

SPECIFICATION REFERENCE	

**UNIFORM STANDARD DRAWINGS  
CLARK COUNTY AREA**

**TYPE XX - A - 30 FT.  
(50 FT. THRU 60 FT. MAST ARMS)  
SIGNAL & LUMINAIRE POLE DETAILS**

DATE 07-01-17	DWG. NO. 808	SHEET 4 OF 6
---------------	--------------	--------------



DESIGN CRITERIA:  
 (LATEST 2007) AASHTO STANDARD SPECIFICATIONS FOR STRUCTURAL SUPPORTS FOR HIGHWAY SIGNS, LUMINAIRES AND TRAFFIC SIGNALS. (FATIGUE LOADS SPECIFIED IN CHAPTER 11 NOT REQUIRED.)  
 MAXIMUM DESIGN MINIMUM YIELD STRENGTH FOR TUBULAR MEMBERS SHALL BE LIMITED TO 48,000 PSI FOR COLD WORKED MATERIALS AND 50,000 PSI FOR NON-COLD WORKED MATERIALS.  
 WIND VELOCITY:  
 90 MPH ISOTACH.

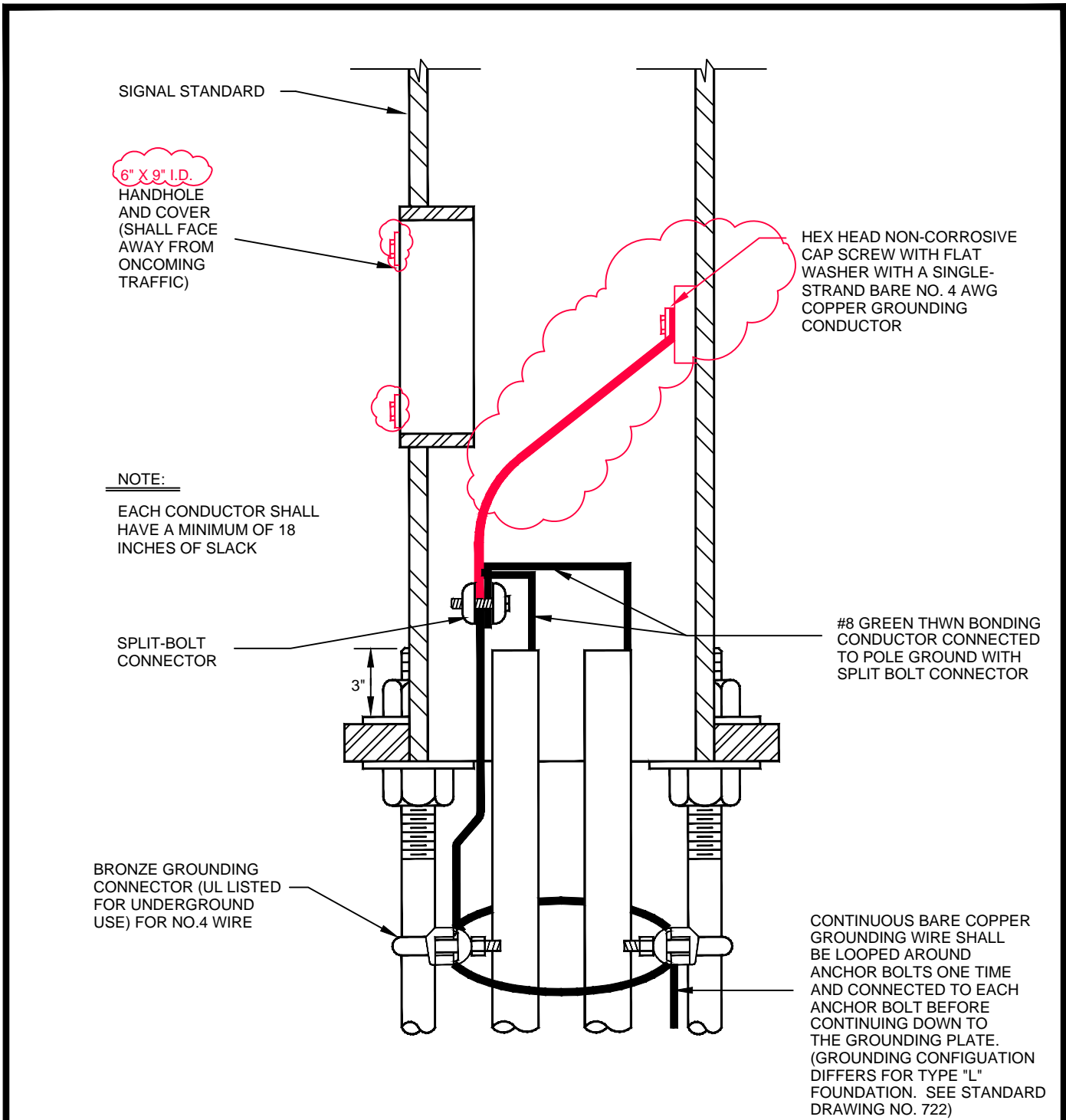
DEVICE	DESCRIPTION	PROJ. AREA (FT <sup>2</sup> )	WEIGHT (LBS)
(A) SIGNAL	12"-3 SEC. W/ BACKPLATES (M-2)	9.80	40
(B) SIGN	R3-5 24" X 30"	5.00	15
(C) SIGN	R3-4 24" X 24"	4.00	10
(D) SIGNAL	12"-4 OR 5 SEC. W/ BACKPLATES (M-4 OR M-5)	13.68	80
(E) SIGN	R10-12 OR R10-12F 30" X 36"	11.25	30
(F) SIGN	STREET NAME-FREE SWINGING-1.68' X 8'	13.44	100
(G) SIGNAL	DUAL-12"-3 SEC. W/ BACKPLATES	17.34	80
(H) SIGNAL	DUAL-PEDESTRIAN	8.00	60

SPECIFICATION REFERENCE	

AGENCY APPROVED	B	C	H	L	M	N
-----------------	---	---	---	---	---	---

UNIFORM STANDARD DRAWINGS  
 CLARK COUNTY AREA

LOADING INFORMATION	



SIGNAL STANDARD

6" X 9" I.D.  
HANDHOLE  
AND COVER  
(SHALL FACE  
AWAY FROM  
ONCOMING  
TRAFFIC)

HEX HEAD NON-CORROSIVE  
CAP SCREW WITH FLAT  
WASHER WITH A SINGLE-  
STRAND BARE NO. 4 AWG  
COPPER GROUNDING  
CONDUCTOR

NOTE:

EACH CONDUCTOR SHALL  
HAVE A MINIMUM OF 18  
INCHES OF SLACK

SPLIT-BOLT  
CONNECTOR

#8 GREEN THWN BONDING  
CONDUCTOR CONNECTED  
TO POLE GROUND WITH  
SPLIT BOLT CONNECTOR

3"

BRONZE GROUNDING  
CONNECTOR (UL LISTED  
FOR UNDERGROUND  
USE) FOR NO.4 WIRE

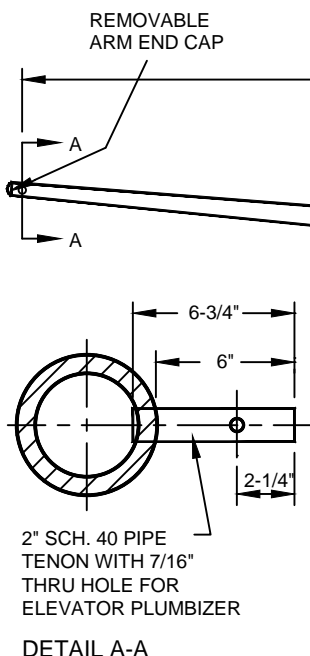
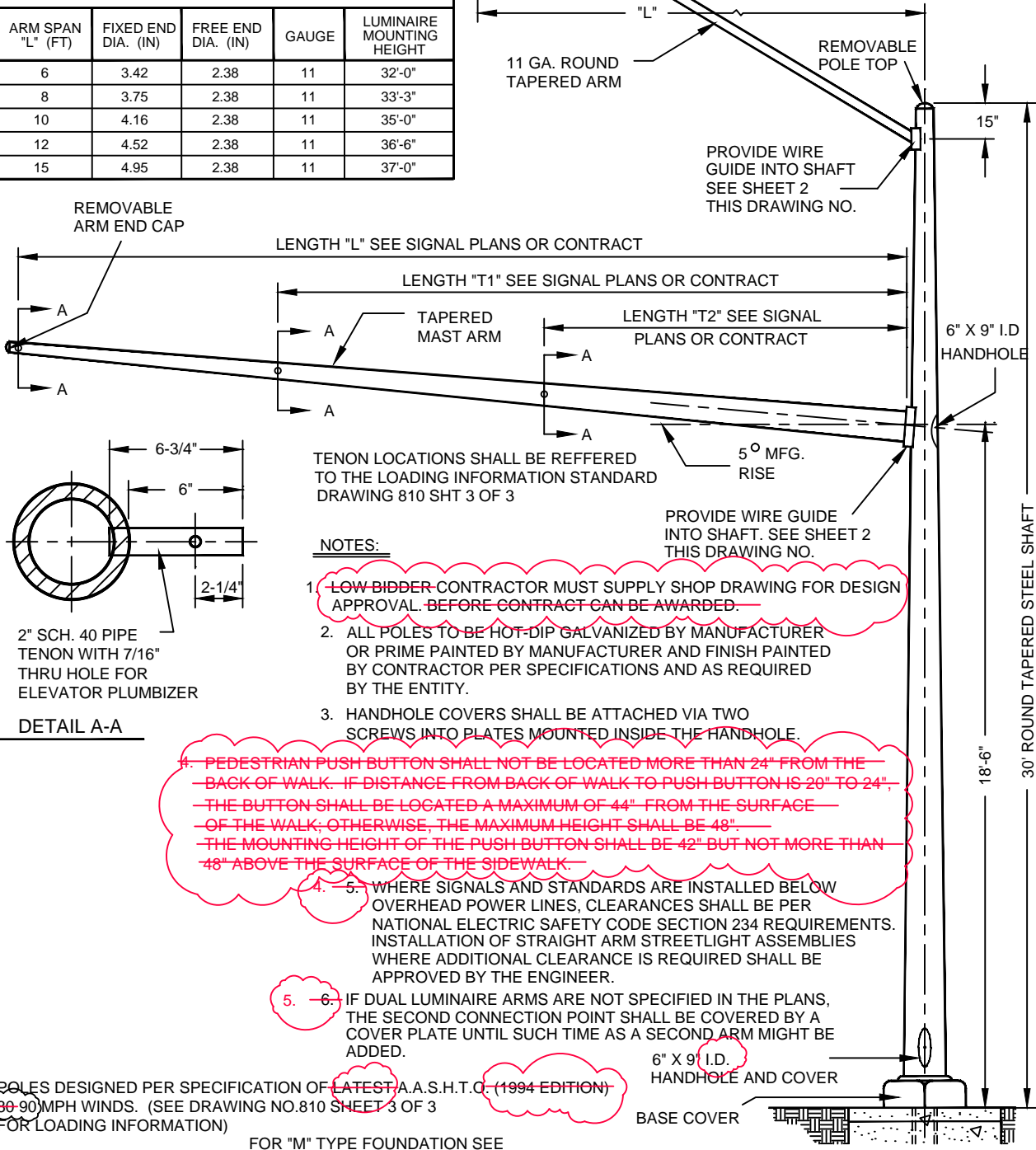
CONTINUOUS BARE COPPER  
GROUNDING WIRE SHALL  
BE LOOPED AROUND  
ANCHOR BOLTS ONE TIME  
AND CONNECTED TO EACH  
ANCHOR BOLT BEFORE  
CONTINUING DOWN TO  
THE GROUNDING PLATE.  
(GROUNDING CONFIGURATION  
DIFFERS FOR TYPE "L"  
FOUNDATION. SEE STANDARD  
DRAWING NO. 722)

PROFESSIONAL ELECTRICAL ENGINEER STAMP ON FILE		AGENCY APPROVED		B	C	H	L	M	N
SPECIFICATION REFERENCE		UNIFORM STANDARD DRAWINGS CLARK COUNTY AREA							
		TRAFFIC SIGNAL POLE GROUNDING							
		DATE 07-01-17	DWG. NO.	808	SHEET		6 OF 6		



LUMINAIRE ARM DATA				
ARM SPAN "L" (FT)	FIXED END DIA. (IN)	FREE END DIA. (IN)	GAUGE	LUMINAIRE MOUNTING HEIGHT
6	3.42	2.38	11	32'-0"
8	3.75	2.38	11	33'-3"
10	4.16	2.38	11	35'-0"
12	4.52	2.38	11	36'-6"
15	4.95	2.38	11	37'-0"

LUMINAIRE MOUNTING HEIGHT MEASURED TO CENTER OF END OF MAST ARM



TENON LOCATIONS SHALL BE REFERRED TO THE LOADING INFORMATION STANDARD DRAWING 810 SHT 3 OF 3

**NOTES:**

1. ~~LOW BIDDER CONTRACTOR MUST SUPPLY SHOP DRAWING FOR DESIGN APPROVAL. BEFORE CONTRACT CAN BE AWARDED.~~
2. ALL POLES TO BE HOT-DIP GALVANIZED BY MANUFACTURER OR PRIME PAINTED BY MANUFACTURER AND FINISH PAINTED BY CONTRACTOR PER SPECIFICATIONS AND AS REQUIRED BY THE ENTITY.
3. HANDHOLE COVERS SHALL BE ATTACHED VIA TWO SCREWS INTO PLATES MOUNTED INSIDE THE HANDHOLE.
4. ~~PEDESTRIAN PUSH BUTTON SHALL NOT BE LOCATED MORE THAN 24" FROM THE BACK OF WALK. IF DISTANCE FROM BACK OF WALK TO PUSH BUTTON IS 20" TO 24", THE BUTTON SHALL BE LOCATED A MAXIMUM OF 44" FROM THE SURFACE OF THE WALK; OTHERWISE, THE MAXIMUM HEIGHT SHALL BE 48". THE MOUNTING HEIGHT OF THE PUSH BUTTON SHALL BE 42" BUT NOT MORE THAN 48" ABOVE THE SURFACE OF THE SIDEWALK.~~
4. 5. WHERE SIGNALS AND STANDARDS ARE INSTALLED BELOW OVERHEAD POWER LINES, CLEARANCES SHALL BE PER NATIONAL ELECTRIC SAFETY CODE SECTION 234 REQUIREMENTS. INSTALLATION OF STRAIGHT ARM STREETLIGHT ASSEMBLIES WHERE ADDITIONAL CLEARANCE IS REQUIRED SHALL BE APPROVED BY THE ENGINEER.
5. 6. IF DUAL LUMINAIRE ARMS ARE NOT SPECIFIED IN THE PLANS, THE SECOND CONNECTION POINT SHALL BE COVERED BY A COVER PLATE UNTIL SUCH TIME AS A SECOND ARM MIGHT BE ADDED.

POLES DESIGNED PER SPECIFICATION OF LATEST A.A.S.H.T.O. (1994 EDITION) ~~80-90~~ MPH WINDS. (SEE DRAWING NO. 810 SHEET 3 OF 3 FOR LOADING INFORMATION)

FOR "M" TYPE FOUNDATION SEE DRAWING NO. 723

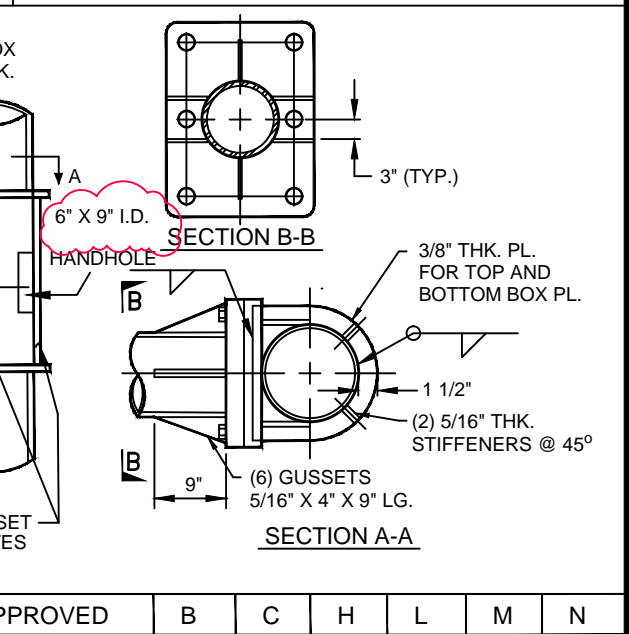
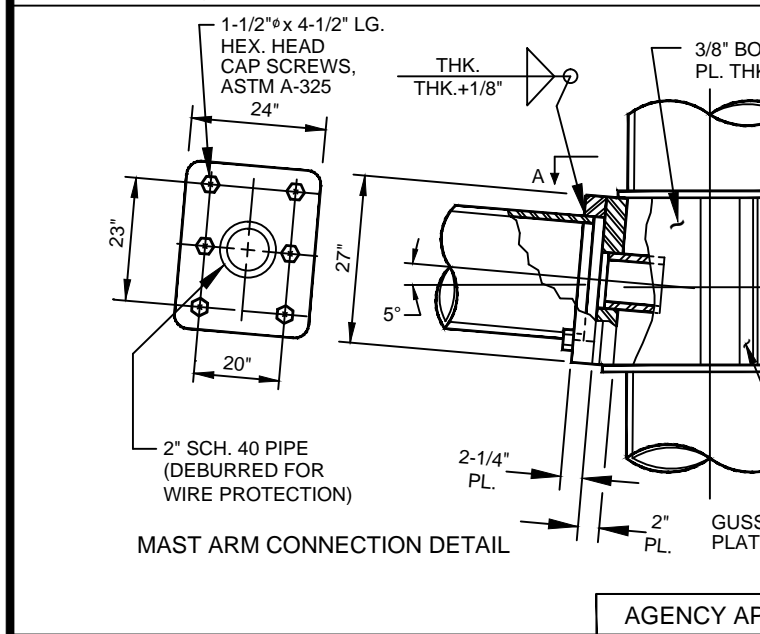
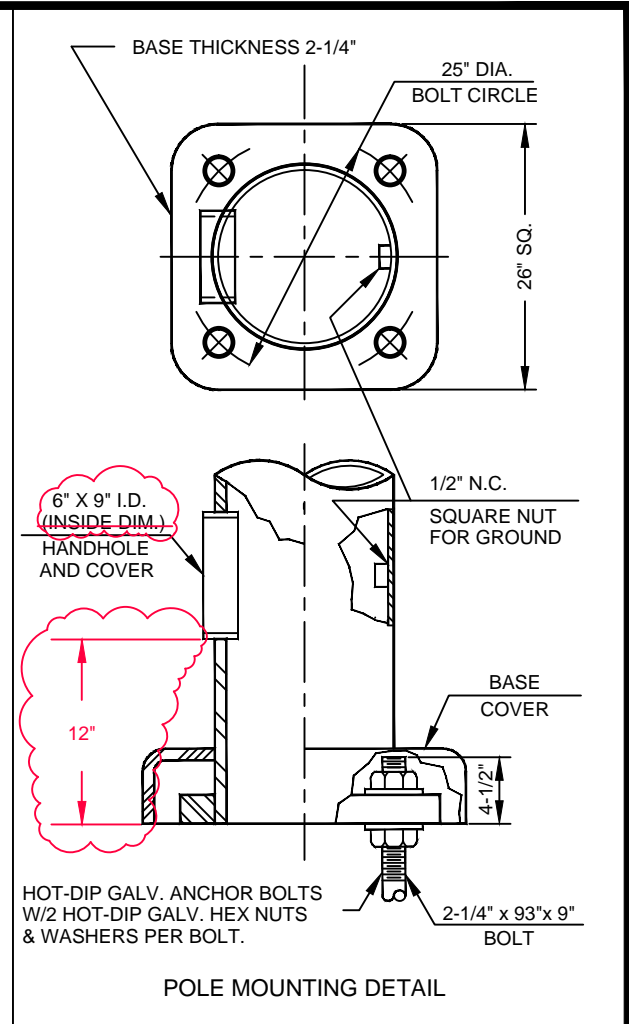
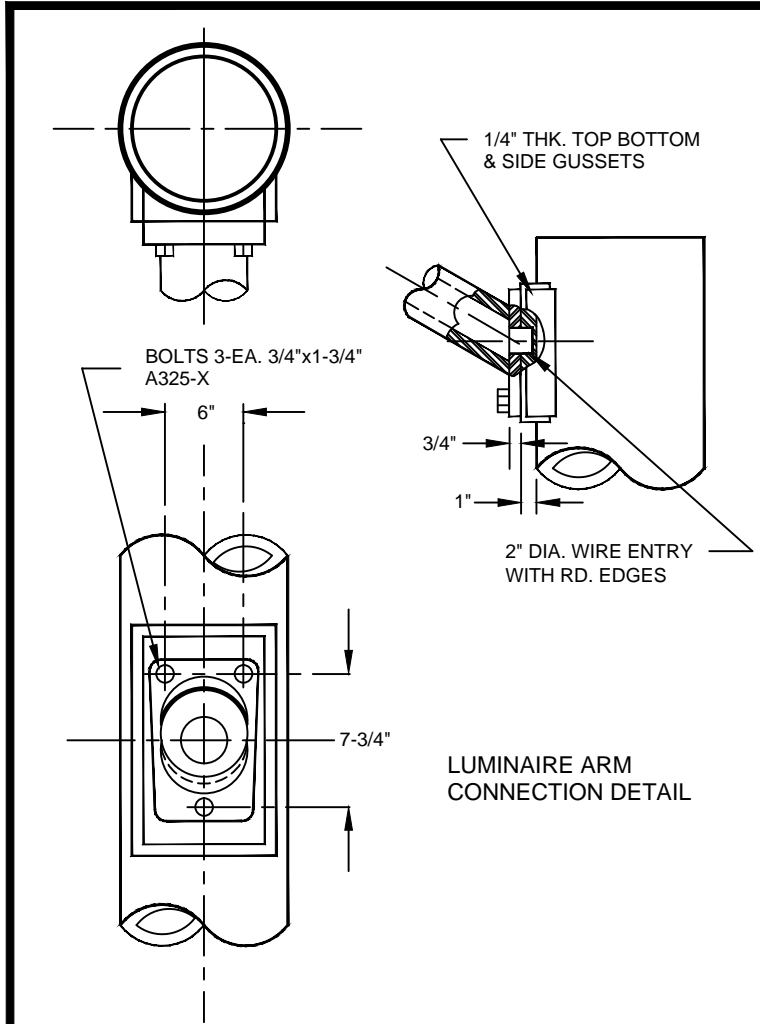
AGENCY APPROVED	B	C	H	L	M	N
-----------------	---	---	---	---	---	---

SPECIFICATION REFERENCE	

**UNIFORM STANDARD DRAWINGS  
CLARK COUNTY AREA**

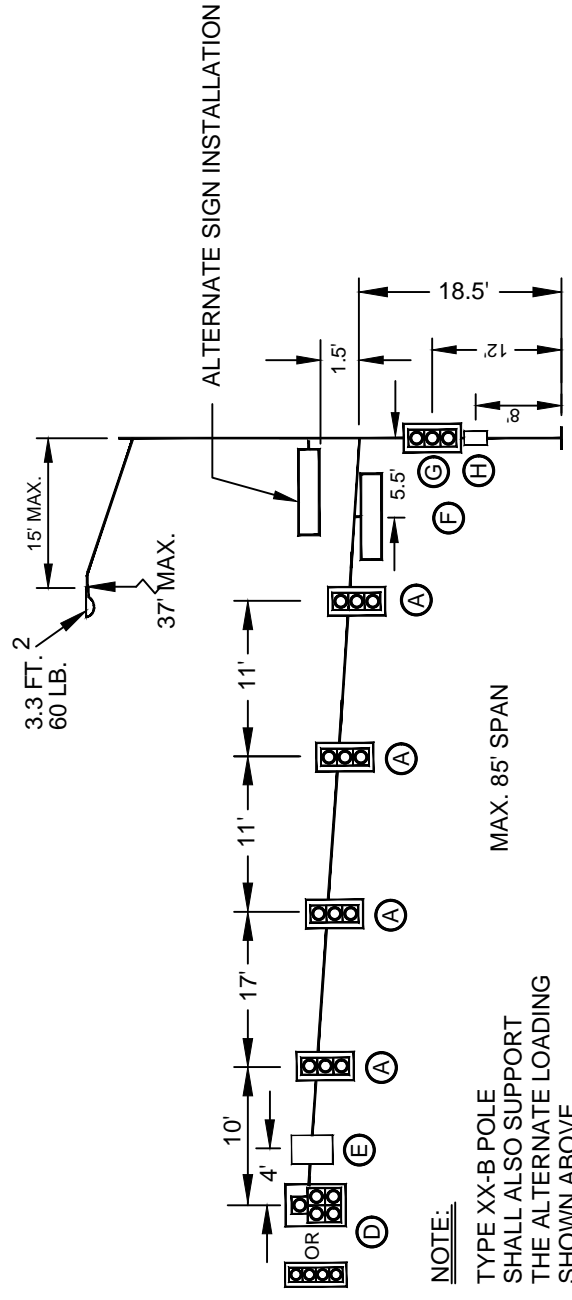
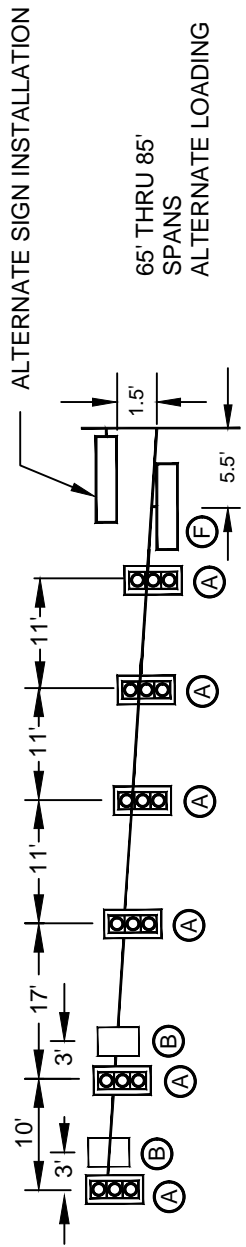
**TYPE XX - B - 30 FT.  
SIGNAL & LUMINAIRE POLE  
(65 FT. THRU 85 FT. MAST ARMS)**

DATE 07-01-17	DWG. NO. 810	SHEET 1 OF 3
---------------	--------------	--------------



SPECIFICATION REFERENCE	

AGENCY APPROVED	B	C	H	L	M	N
UNIFORM STANDARD DRAWINGS CLARK COUNTY AREA						
TYPE XX - B - 30 FT. (65 FT. THRU 85 FT. MAST ARMS) SIGNAL & LUMINAIRE POLE DETAILS						
DATE 07-01-17	DWG. NO.	810	SHEET	2 OF 3		



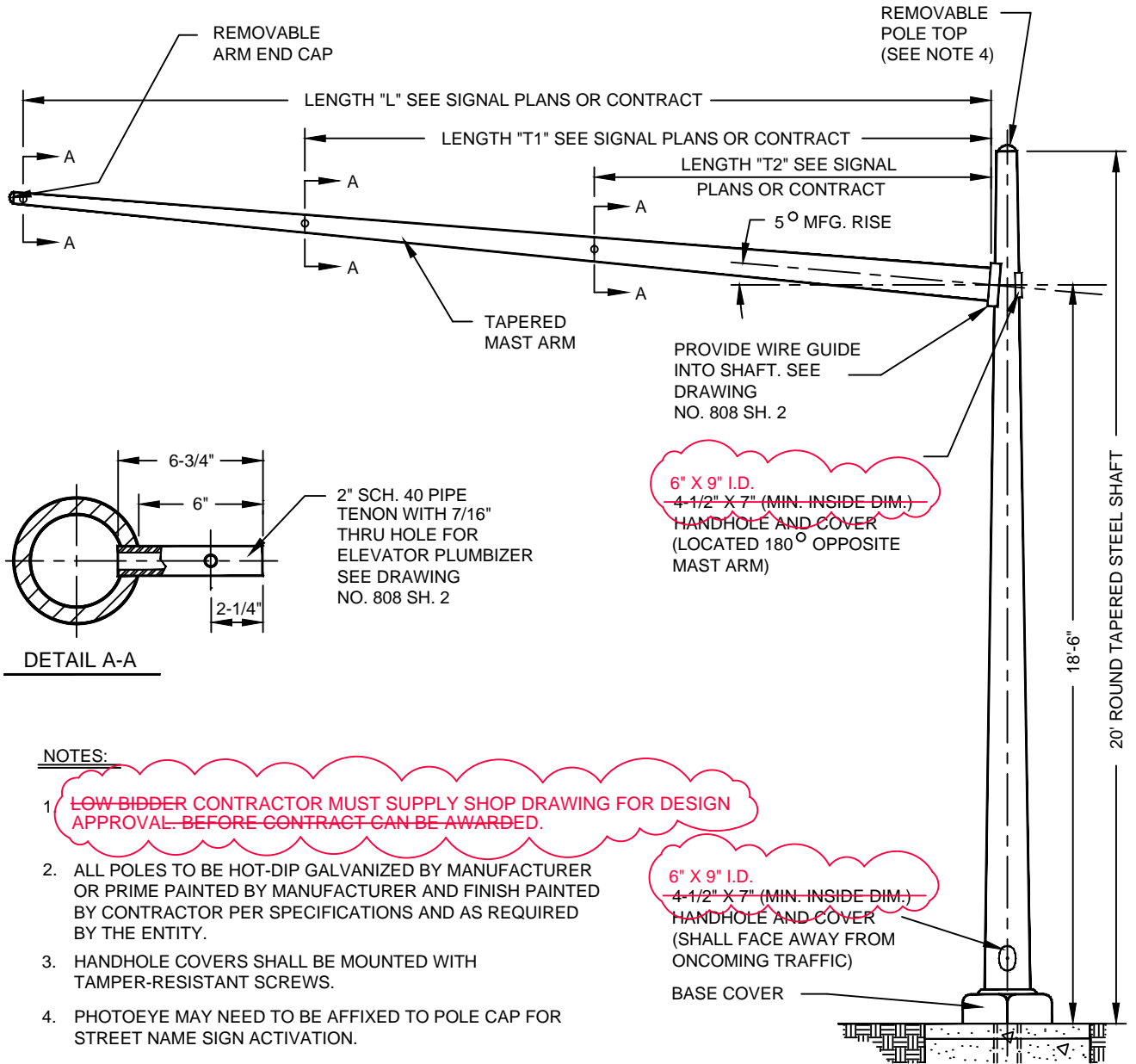
**NOTE:**  
 TYPE XX-B POLE SHALL ALSO SUPPORT THE ALTERNATE LOADING SHOWN ABOVE.

**DESIGN CRITERIA:**  
 LATEST 2003 AASHTO STANDARD SPECIFICATIONS FOR STRUCTURAL SUPPORTS FOR HIGHWAY SIGNS, LUMINAIRES AND TRAFFIC SIGNALS. (FATIGUE LOADS SPECIFIED IN CHAPTER 11 NOT REQUIRED.)  
 DESIGN MINIMUM YIELD STRENGTH FOR TUBULAR MEMBERS SHALL BE LIMITED TO 48,000 PSI FOR COLD WORKED MATERIALS AND 50,000 PSI FOR NON-COLD WORKED MATERIALS.  
 WIND VELOCITY: 90 MPH ISOTACH.

DEVICE	DESCRIPTION	PROJ. AREA (FT <sup>2</sup> )	WEIGHT (LBS)
(A) SIGNAL	12"- 3 SEC. W/ BACKPLATES (M-2)	9.80	40
(B) SIGN	R3-5 24" X 30"	5.00	15
(C) SIGN	R3-4 24" X 24"	4.00	10
(D) SIGNAL	12"- 4 OR 5 SEC. W/ BACKPLATES (M-4 OR M-5)	13.68	80
(E) SIGN	R10-12 OR R10-12F 30" X 36"	6.00	15
(F) SIGN	STREET NAME-FREE SWINGING-1.68' X 8'	13.44	100
(G) SIGNAL	DUAL-12"- 3 SEC. W/ BACKPLATES	17.34	80
(H) SIGNAL	DUAL-PEDESTRIAN	8.00	60

SPECIFICATION REFERENCE	

AGENCY APPROVED	B	C	H	L	M	N
UNIFORM STANDARD DRAWINGS CLARK COUNTY AREA						
LOADING INFORMATION						
DATE 07-01-17	DWG. NO.	810	SHEET	3 OF 3		



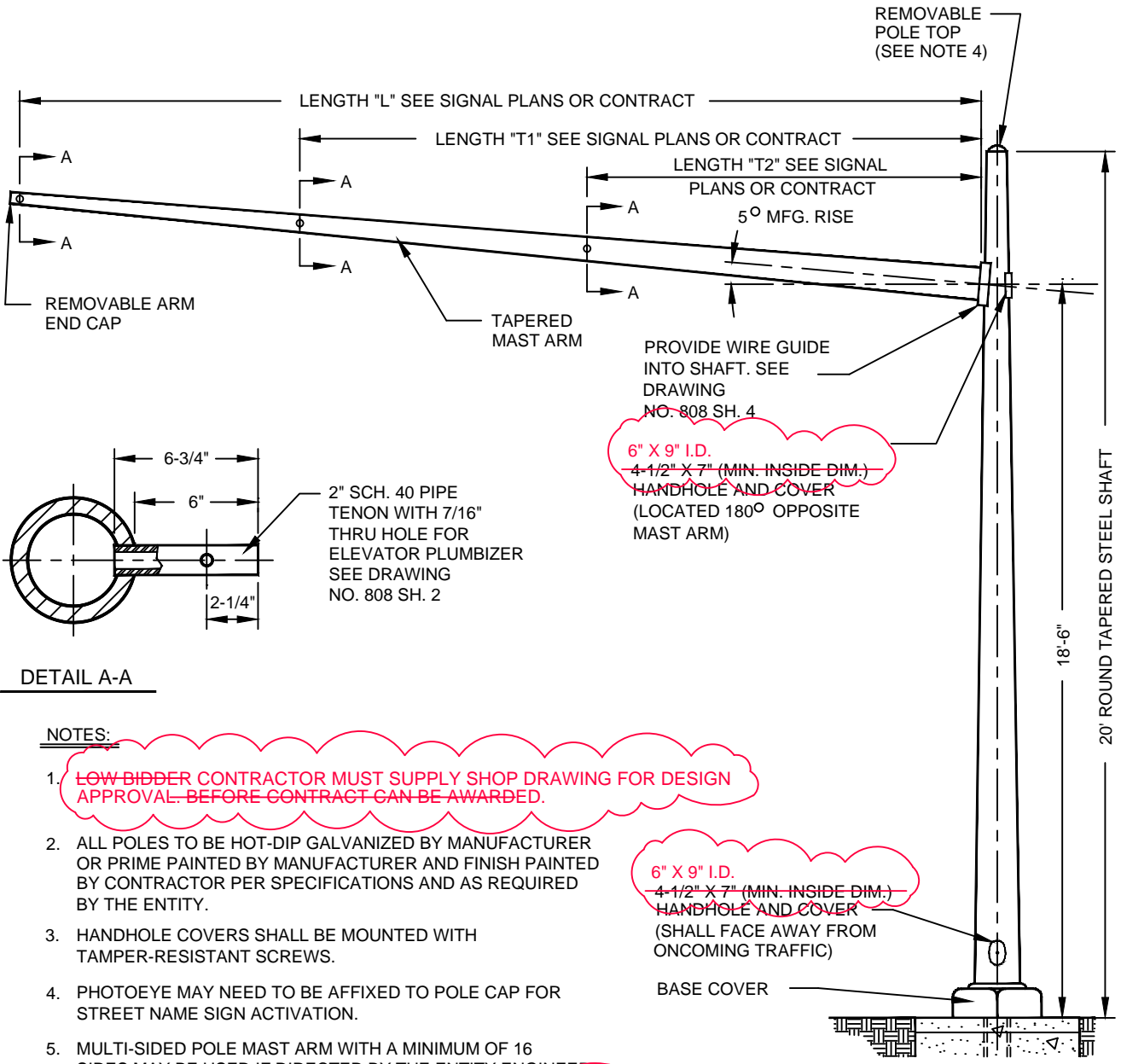
NOTES:

1. **LOW BIDDER CONTRACTOR MUST SUPPLY SHOP DRAWING FOR DESIGN APPROVAL BEFORE CONTRACT CAN BE AWARDED.**
2. ALL POLES TO BE HOT-DIP GALVANIZED BY MANUFACTURER OR PRIME PAINTED BY MANUFACTURER AND FINISH PAINTED BY CONTRACTOR PER SPECIFICATIONS AND AS REQUIRED BY THE ENTITY.
3. HANDHOLE COVERS SHALL BE MOUNTED WITH TAMPER-RESISTANT SCREWS.
4. PHOTOEYE MAY NEED TO BE AFFIXED TO POLE CAP FOR STREET NAME SIGN ACTIVATION.
5. MULTI-SIDED POLE AND MAST ARM WITH A MINIMUM OF 16 SIDES MAY BE USED IF DIRECTED BY THE ENTITY ENGINEER.

**POLES DESIGNED PER SPECIFICATION OF LATEST A.S.H.T.O., 80 MPH WINDS.**  
(SEE DRAWING NO. 808 SHEET 5 FOR LOADING INFORMATION)

FOR OTHER DETAILS SEE DRAWING NO. 808 SHTS. 2 & 6.  
FOR "H" TYPE FOUNDATION SEE DRAWING NO. 721.

	AGENCY APPROVED	B	C	H	L	M	N
SPECIFICATION REFERENCE	UNIFORM STANDARD DRAWINGS CLARK COUNTY AREA						
	TYPE XX 20 FT. SIGNAL POLE (45 FT. OR LESS MAST ARMS)						
	DATE 07-01-17	DWG. NO.	812	SHEET	1 OF 2		



DETAIL A-A

NOTES:

1. ~~LOW BIDDER CONTRACTOR MUST SUPPLY SHOP DRAWING FOR DESIGN APPROVAL BEFORE CONTRACT CAN BE AWARDED.~~
2. ALL POLES TO BE HOT-DIP GALVANIZED BY MANUFACTURER OR PRIME PAINTED BY MANUFACTURER AND FINISH PAINTED BY CONTRACTOR PER SPECIFICATIONS AND AS REQUIRED BY THE ENTITY.
3. HANDHOLE COVERS SHALL BE MOUNTED WITH TAMPER-RESISTANT SCREWS.
4. PHOTOEYE MAY NEED TO BE AFFIXED TO POLE CAP FOR STREET NAME SIGN ACTIVATION.
5. MULTI-SIDED POLE MAST ARM WITH A MINIMUM OF 16 SIDES MAY BE USED IF DIRECTED BY THE ENTITY ENGINEER.

~~POLES DESIGNED PER SPECIFICATION OF LATEST A.A.S.H.T.O., 80-90 MPH WINDS.~~  
(SEE DRAWING NO. 808 SHEET 5 FOR LOADING INFORMATION)

FOR OTHER DETAILS SEE DRAWING NO. 808 SHTS. 4 & 6.  
FOR "L" TYPE FOUNDATION SEE DRAWING NO.722.

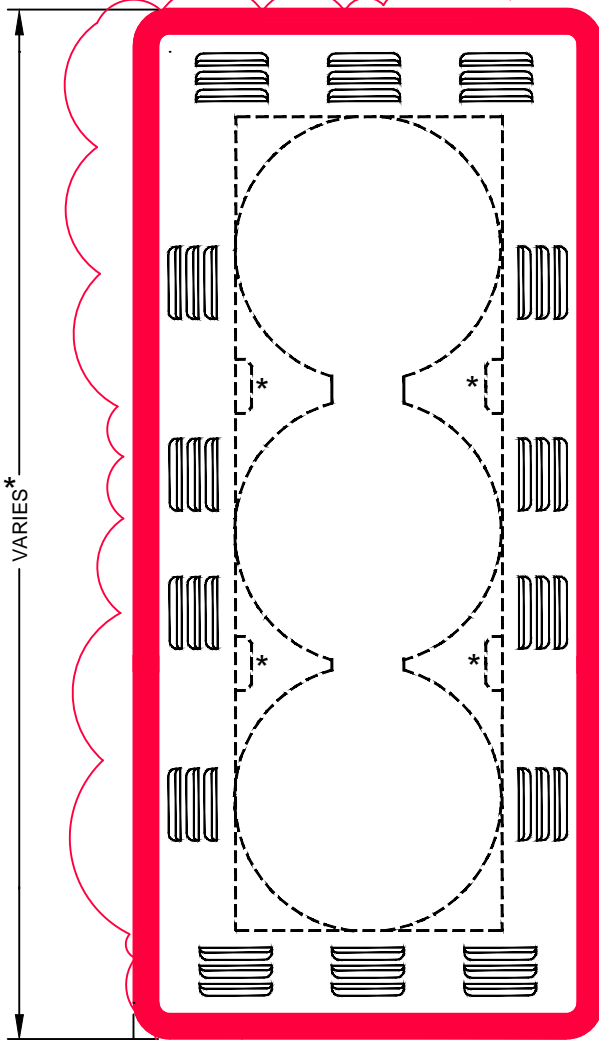
AGENCY APPROVED	B	C	H	L	M	N
UNIFORM STANDARD DRAWINGS CLARK COUNTY AREA						
TYPE XX-A-20 FT. (50 FT. THRU 60 FT. MAST ARMS) SIGNAL POLE						
DATE 07-01-17	DWG. NO.	812	SHEET	2 OF 2		

SPECIFICATION REFERENCE	

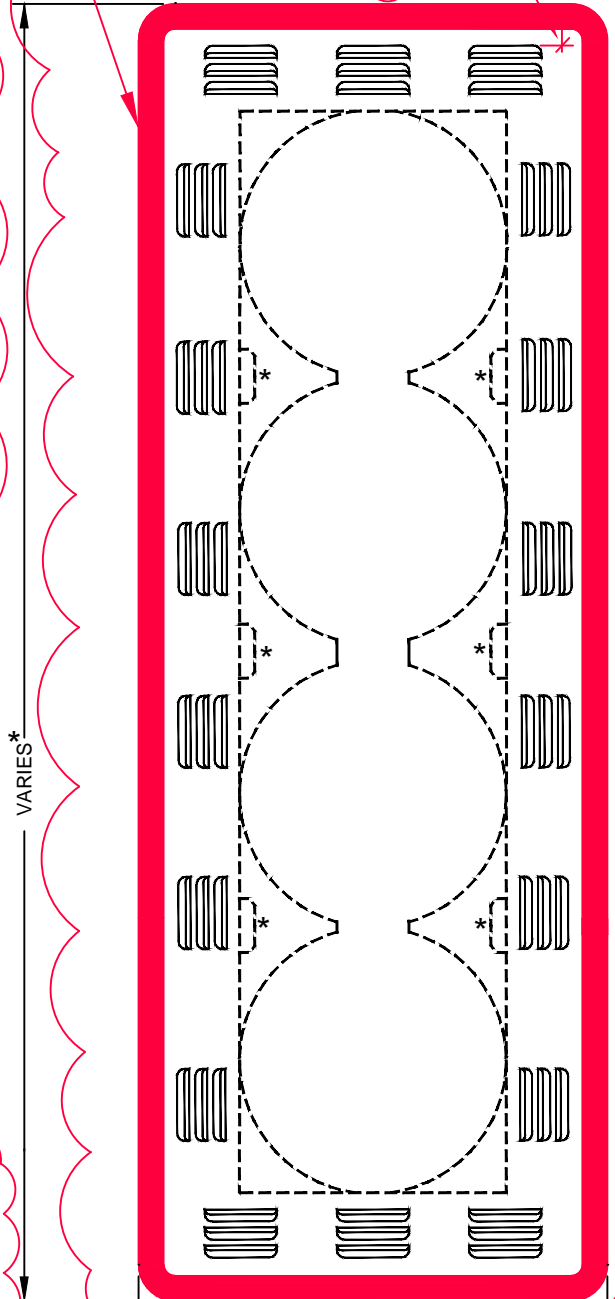
PAINT: FLAT BLACK \* DIMENSIONS AND ATTACHMENT METHODS VARY PER MANUFACTURE  
 BORDER WIDTH: 5-INCH (TYP.)

2" YELLOW RETROREFLECTIVE BORDER LINE ADHESIVE SHEETING

1/2" CLEARANCE (TYP.) (MIN.)



3-SECTION ASSEMBLY



4-SECTION ASSEMBLY

NOTES:

1. ALL TRAFFIC SIGNAL BACKPLATES SHALL HAVE A 2-INCH RETROREFLECTIVE ADHESIVE SHEETING BORDER ON THE ENTIRE OUTER PERIMETER OF THE FRONT SIDE OF THE BACKPLATE.
2. RETROREFLECTIVE SHEETING SHALL BE FLUORESCENT YELLOW, ASTM D4956-13 TYPE XI OR BETTER.
3. THE RETROREFLECTIVE SHEETING BORDER SHALL HAVE A MINIMUM OF 0.5"
4. CLEARANCE FROM ALL LOUVERS. NO RETROREFLECTIVE SHEETING SHALL BE PLACED OVER ANY LOUVERED AREA.
5. RETROREFLECTIVE SHEETING BORDER SHALL BE INSTALLED BY THE MANUFACTURER, AND MODIFICATIONS SHALL NOT BE MADE BY THE CONTRACTOR.
6. THE BACK PLATE WITH RETROREFLECTIVE SHEETING BORDER SHALL BE FROM THE SAME MANUFACTURER AS THE SIGNAL HEAD ASSEMBLY. THE COMPLETE HEAD ASSEMBLY, INCLUDING THE BACKPLATE, SHALL BE CAPABLE OF WITHSTANDING WINDS OF 90 MPH WITHOUT DAMAGE OR SEPARATION OF ANY PARTS FROM THE SIGNAL HEAD ASSEMBLY.

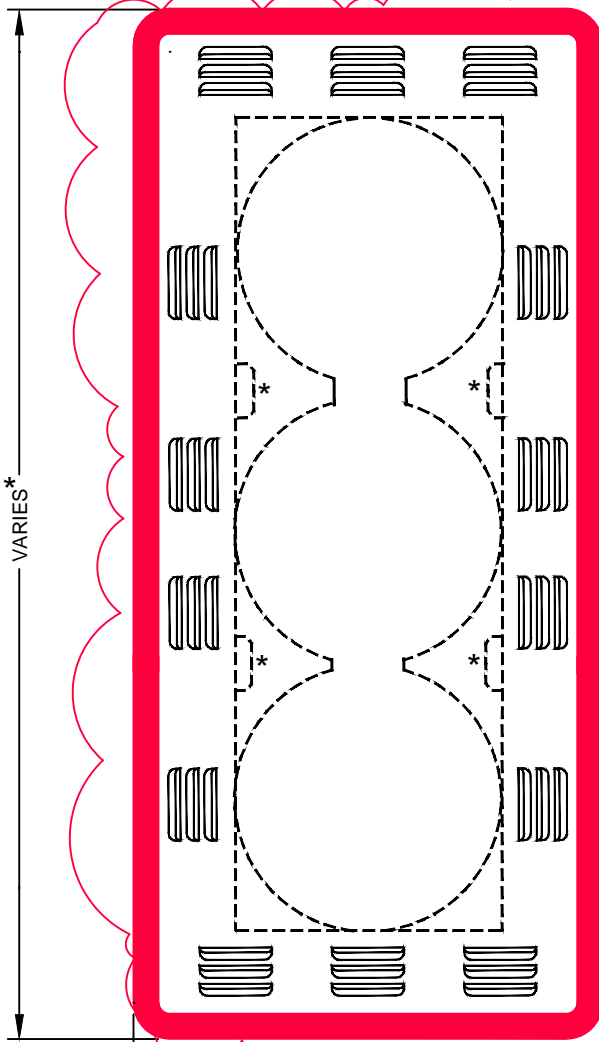
AGENCY APPROVED	B	C	H	L	M	N
UNIFORM STANDARD DRAWINGS CLARK COUNTY AREA						
LOUVERED BACKPLATE FOR MAST ARM MOUNTED SIGNAL						
DATE 07-01-17	DWG. NO.	840				

SPECIFICATION REFERENCE	

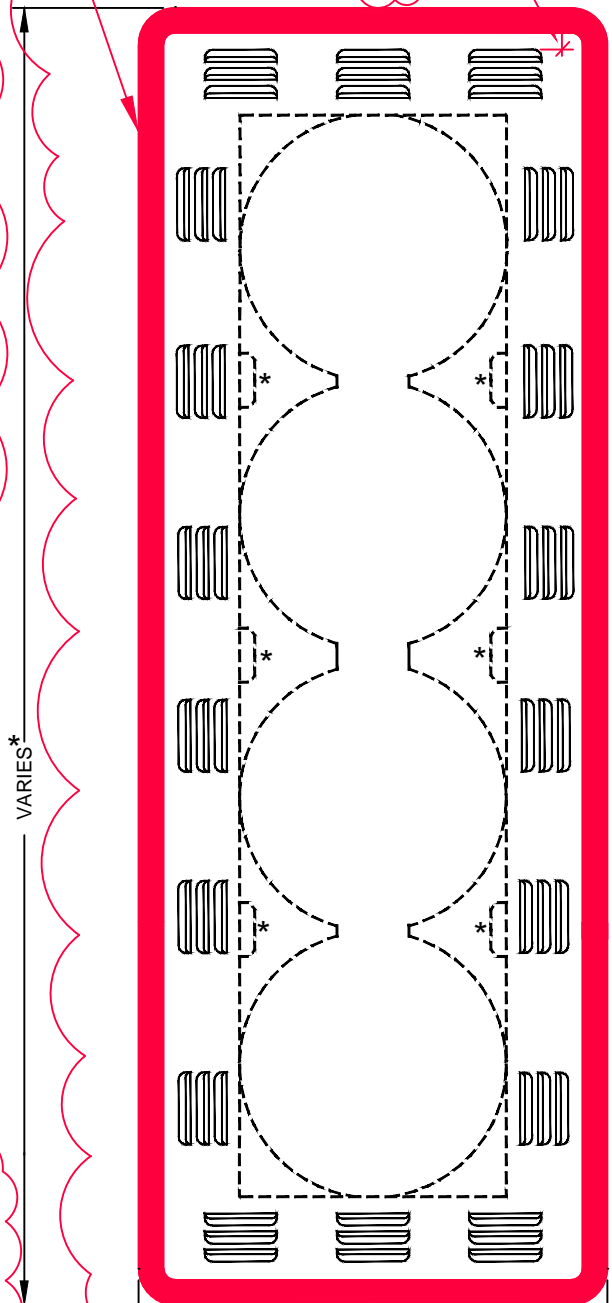
PAINT: FLAT BLACK \* DIMENSIONS AND ATTACHMENT METHODS VARY PER MANUFACTURE BORDER WIDTH: 5-INCH (TYP.)

2" YELLOW RETROREFLECTIVE BORDER LINE ADHESIVE SHEETING

1/2" CLEARANCE (TYP.) (MIN.)



3-SECTION ASSEMBLY



4-SECTION ASSEMBLY

NOTES:

1. ALL TRAFFIC SIGNAL BACKPLATES SHALL HAVE A 2-INCH RETROREFLECTIVE ADHESIVE SHEETING BORDER ON THE ENTIRE OUTER PERIMETER OF THE FRONT SIDE OF THE BACKPLATE.
2. RETROREFLECTIVE SHEETING SHALL BE FLUORESCENT YELLOW, ASTM D4956-13 TYPE XI OR BETTER.
3. THE RETROREFLECTIVE SHEETING BORDER SHALL HAVE A MINIMUM OF 0.5" CLEARANCE FROM ALL LOUVERS. NO RETROREFLECTIVE SHEETING SHALL BE PLACED OVER ANY LOUVERED AREA.
4. RETROREFLECTIVE SHEETING BORDER SHALL BE INSTALLED BY THE MANUFACTURER, AND MODIFICATIONS SHALL NOT BE MADE BY THE CONTRACTOR.
5. THE BACK PLATE WITH RETROREFLECTIVE SHEETING BORDER SHALL BE FROM THE SAME MANUFACTURER AS THE SIGNAL HEAD ASSEMBLY. THE COMPLETE HEAD ASSEMBLY, INCLUDING THE BACKPLATE, SHALL BE CAPABLE OF WITHSTANDING WINDS OF 90 MPH WITHOUT DAMAGE OR SEPARATION OF ANY PARTS FROM THE SIGNAL HEAD ASSEMBLY.

AGENCY APPROVED	B	C	H	L	M	N
-----------------	---	---	---	---	---	---

SPECIFICATION REFERENCE

UNIFORM STANDARD DRAWINGS  
CLARK COUNTY AREA


LOUVERED BACKPLATE FOR  
POLE MOUNTED SIGNAL

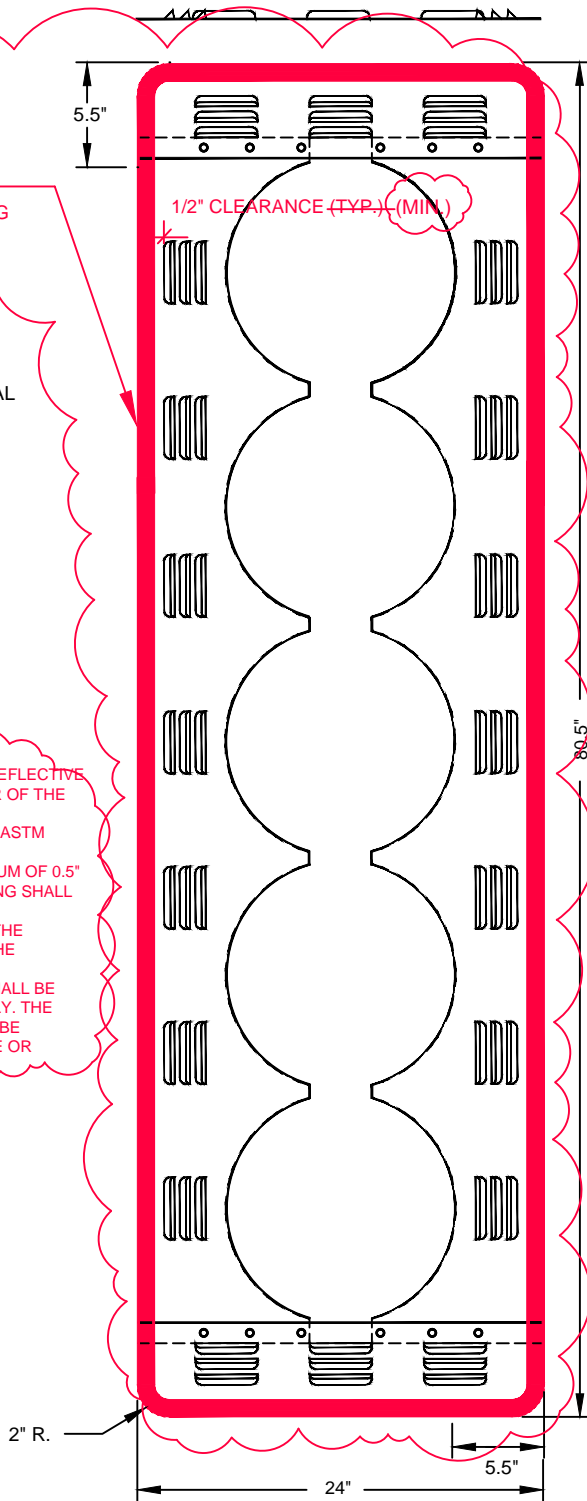
2" YELLOW RETROREFLECTIVE  
BORDER LINE ADHESIVE SHEETING

PAINT: FLAT BLACK

SHOWN 5 SECTION, 12" SIGNAL  
HEAD BACKPLATE WITHOUT  
ELEVATOR PLUMBIZER

NOTES:

1. ALL TRAFFIC SIGNAL BACKPLATES SHALL HAVE A 2-INCH RETROREFLECTIVE ADHESIVE SHEETING BORDER ON THE ENTIRE OUTER PERIMETER OF THE FRONT SIDE OF THE BACKPLATE.
2. RETROREFLECTIVE SHEETING SHALL BE FLUORESCENT YELLOW, ASTM D4956-13 TYPE XI OR BETTER.
3. THE RETROREFLECTIVE SHEETING BORDER SHALL HAVE A MINIMUM OF 0.5" CLEARANCE FROM ALL LOUVERS. NO RETROREFLECTIVE SHEETING SHALL BE PLACED OVER ANY LOUVERED AREA.
4. RETROREFLECTIVE SHEETING BORDER SHALL BE INSTALLED BY THE MANUFACTURER, AND MODIFICATIONS SHALL NOT BE MADE BY THE CONTRACTOR.
5. THE BACK PLATE WITH RETROREFLECTIVE SHEETING BORDER SHALL BE FROM THE SAME MANUFACTURER AS THE SIGNAL HEAD ASSEMBLY. THE COMPLETE HEAD ASSEMBLY, INCLUDING THE BACKPLATE, SHALL BE CAPABLE OF WITHSTANDING WINDS OF 90 MPH WITHOUT DAMAGE OR SEPARATION OF ANY PARTS FROM THE SIGNAL HEAD ASSEMBLY.



AGENCY APPROVED	B	C	H	L	M	N
UNIFORM STANDARD DRAWINGS CLARK COUNTY AREA						
LOUVERED BACKPLATE FOR 5 SECTION SIGNAL HEAD						
DATE 07-01-17	DWG. NO.	842	SHEET 1 OF 2			

SPECIFICATION REFERENCE	