

**UNIFORM STANDARD DRAWINGS
CLARK COUNTY AREA**

VOLUME II - YEAR 2009 REVISIONS

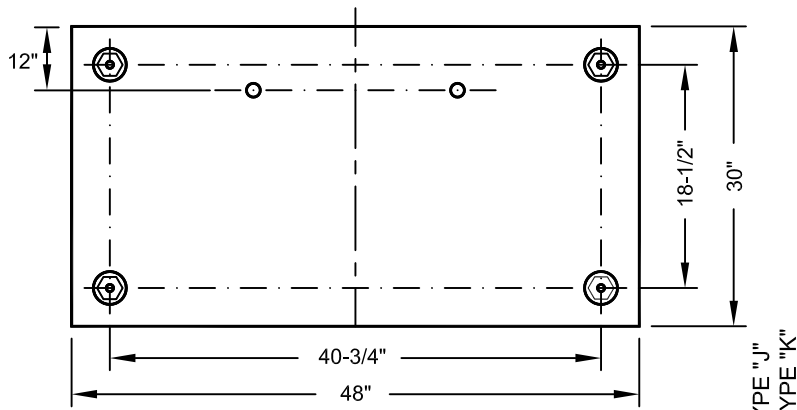
Drawing Number	Title	Nature of Change	Effective Date
404.213	"Type "J" and "K" Foundations"	Revision to the bare copper grounding wire and the conduit projection above the foundation specifications.	1/1/09
404.213A	"Cabinet Conduit Layout Type "J" and "K" Foundations"	Addition to create the detail for cabinet conduit layout.	1/1/09
404.1005	"Bill of Materials Signal Assemblies"	Revision to add a dogleg fitting on the B-2T assembly.	1/1/09
404.1024	"Signal Assemblies B-1T, B-2T, B-3T"	Revision to add a dogleg fitting on the B-2T assembly.	1/1/09
404.1029	"Signal Assembly B-14T"	Revision to add a dogleg and banding strap fittings on the B-14T assembly.	1/1/09

Sign up for e-mail notification of Uniform Standard Specifications and Drawings updates at:

<http://www.rtcsouthernnevada.com/mpo/streets/>

Click on the icon:



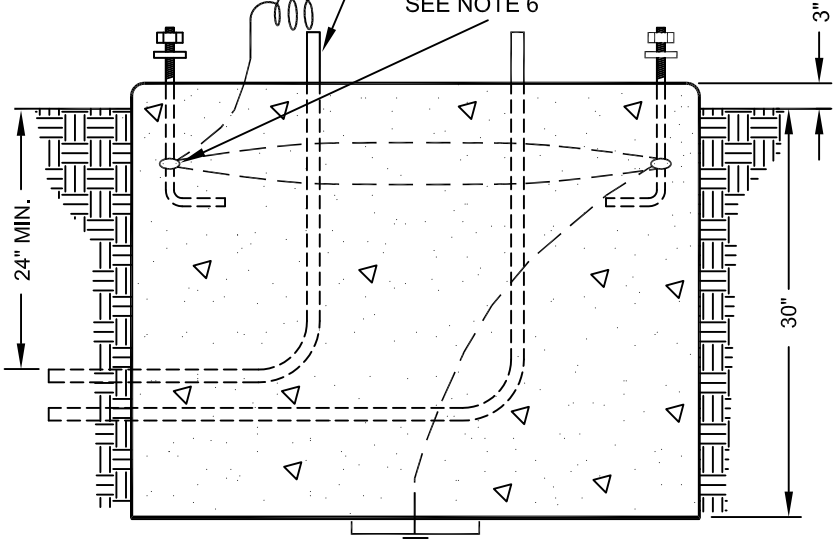


NOTES:

1. FOR CONDUIT SIZE, LOCATION, AND QUANTITY SEE PLANS REFER TO CONDUIT LAYOUT DRAWING # 404.213A FOR DETAILS.
2. 3/4" X 18" X 3" HOT-DIP GALVANIZED ANCHOR BOLTS. LOCATE WITH TEMPLATE.
3. ANCHOR BOLT PROJECTION ABOVE FOUNDATION SHALL BE 3-1/2" MIN. , 4-1/2" MAX.
4. CONDUIT PROJECTION ABOVE FOUNDATION SHALL BE 1" MIN. , 4" MAX.
5. LOCATION OF FOUNDATION MUST BE APPROVED BY ENGINEER IN FIELD.
6. CONTINUOUS BARE COPPER GROUNDING WIRE SHALL BE CONNECTED TO EACH ANCHOR BOLT WITH BRONZE GROUNDING CONNECTOR BEFORE CONTINUING DOWN TO THE GROUNDING PLATE.

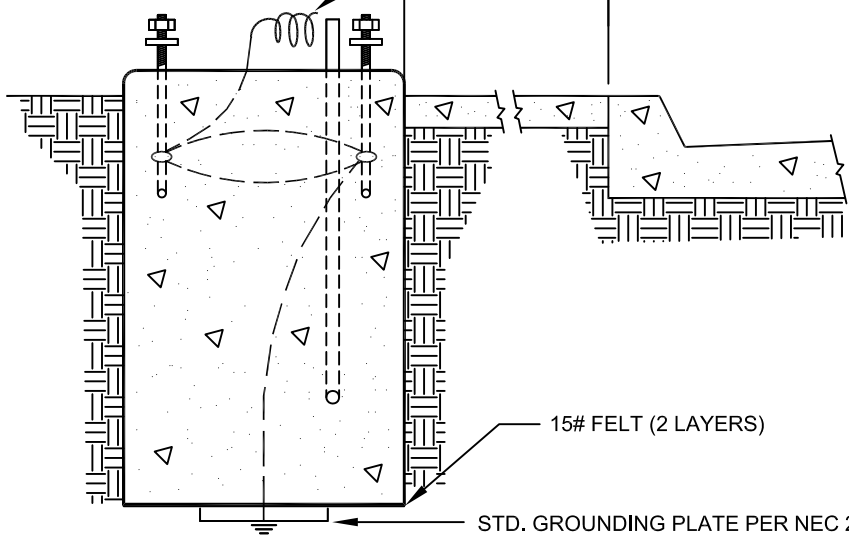
2" PVC COND. TO BE ADDED IN EVERY FDN. , FOR FUTURE USE. POINT TOWARDS INTERSECTION.

BRONZE GROUNDING CONNECTOR UL LISTED FOR UNDERGROUND USE (ONE PER BOLT) SEE NOTE 6



6' OF #4 AWG SINGLE STRAND BARE COPPER GROUNDING WIRE ABOVE FOUNDATION. CONNECT GROUNDING WIRE TO GROUNDING POINT.

60" MIN. (EASEMENT MAY BE NECESSARY)



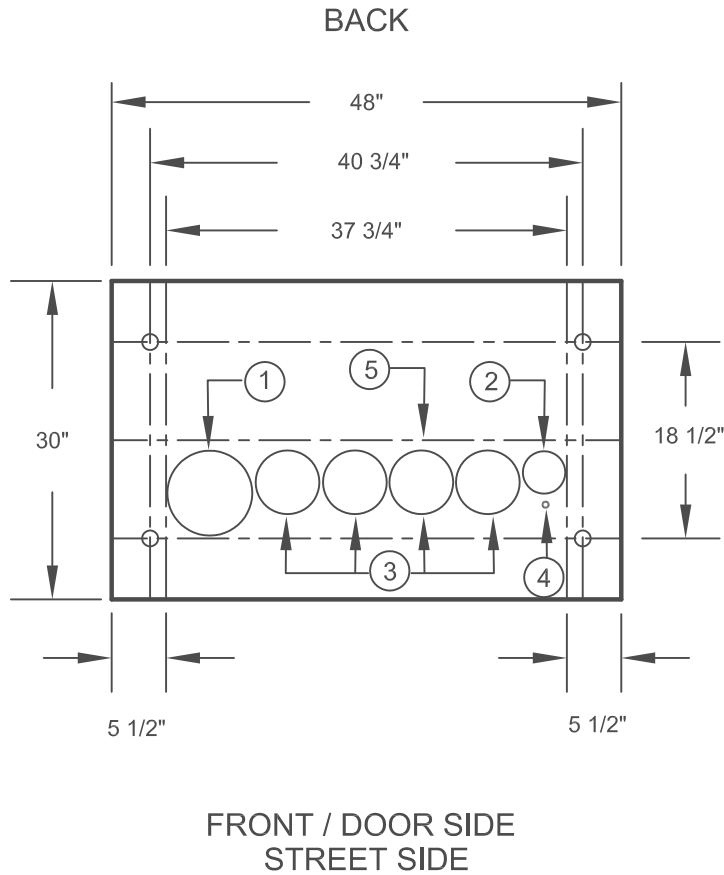
15# FELT (2 LAYERS)

STD. GROUNDING PLATE PER NEC 250-83

SPECIFICATION REFERENCE

UNIFORM STANDARD DRAWINGS
CLARK COUNTY AREA

TYPE "J" & "K" FOUNDATIONS



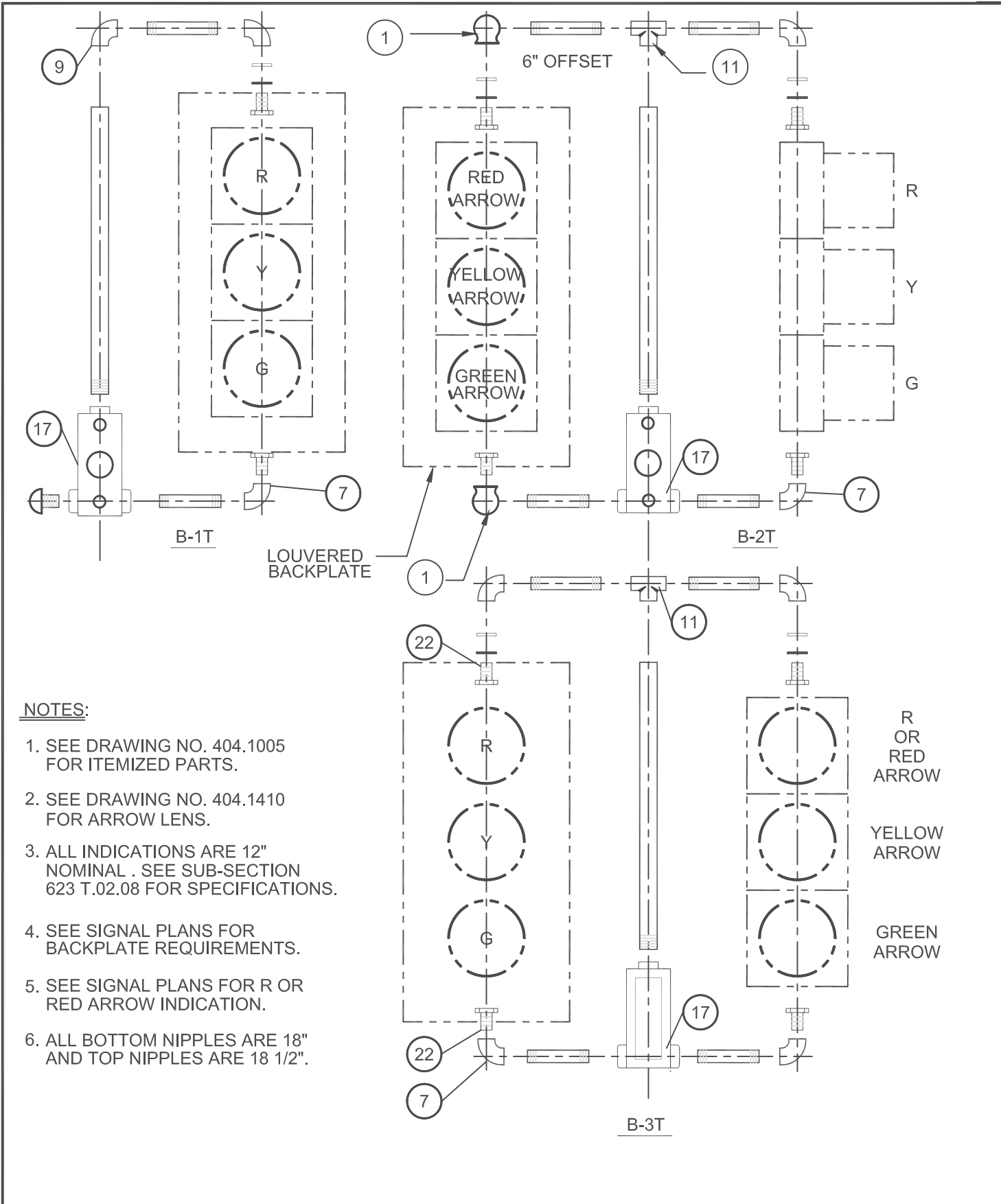
NOTES :

1. 3" OR 4" FIBER OR INTERCONNECT FROM TYPE 200 OR P-30 PULL BOX. REFER TO PLANS FOR INTERCONNECT/FIBER CONDUIT SIZE.
2. 2" CONDUIT FROM SERVICE PEDESTAL.
3. 3" CONDUITS FROM #7 TRAFFIC SIGNAL PULL BOX FOR SIGNAL POLES.
4. #4 SINGLE STRAND BARE COPPER WIRE SEE DRAWING 404.213 FOR DETAILS.
5. INSTALL CONDUITS 1" FRONT OF CENTER LINE.
6. REFER TO PLANS FOR ANY ADDITIONAL CONDUITS.

SPECIFICATION REFERENCE	UNIFORM STANDARD DRAWINGS CLARK COUNTY AREA		
	CABINET CONDUIT LAYOUT TYPE "J" & "K" FOUNDATIONS		
	DATE : 10-9-08	DWG. NO. 404.213A	SHEET 1 OF 1

ITEM	DESCRIPTION	STANDARD DWG. NO.
1.	DOGLEG	404.1029
2.	ELEVATOR PLUMBIZER	404.1203
3.	POLE PLATE WITH WIRE GUIDE	404.1204
4.	2-WAY TIE BRACE	404.1200
5.	3-WAY TIE BRACE	404.1200
6.	4-WAY TIE BRACE	404.1200
7.	SPECIAL ELBOW	404.1202
8.	SPECIAL TEE	404.1202
9.	MALLEABLE ELBOW-REAMED/SET SCREW	404.1206
10.	MALLEABLE ELBOW/SIDE OUTLET/REAMED/SET SCREW	404.1206
11.	MALLEABLE TEE, REAMED/SET SCREW	404.1206
12.	MALLEABLE TEE/SIDE OUTLET, REAMED/SET SCREW	404.1206
13.	MALLEABLE CROSS, REAMED/SET SCREW	404.1206
14.	MALLEABLE CROSS/SIDE OUTLET, REAMED/SET SCREW	404.1206
15.	4-WAY CENTER HUB	404.1205
16.	POST TOP MOUNTED BRACKET	404.1202
17.	SIDE BRACKET MOUNTED ADAPTER WITH TERMINAL COMPT.	404.1208
18.	POST TOP MOUNTED ADAPTER WITH TERMINAL COMPT.	404.1207
19.	LOCKING RING	404.1200
20.	ORNAMENTAL CAP	404.1200
21.	POST TOP MOUNTED ADAPTER WITH 3 PORTS	404.1208
22.	LOCKING NIPPLE	404.1200
23.	POLE PLATE	404.1201
24.	1-1/2" MENERALLAC STRAP OR APPROVED EQUAL	404.1029

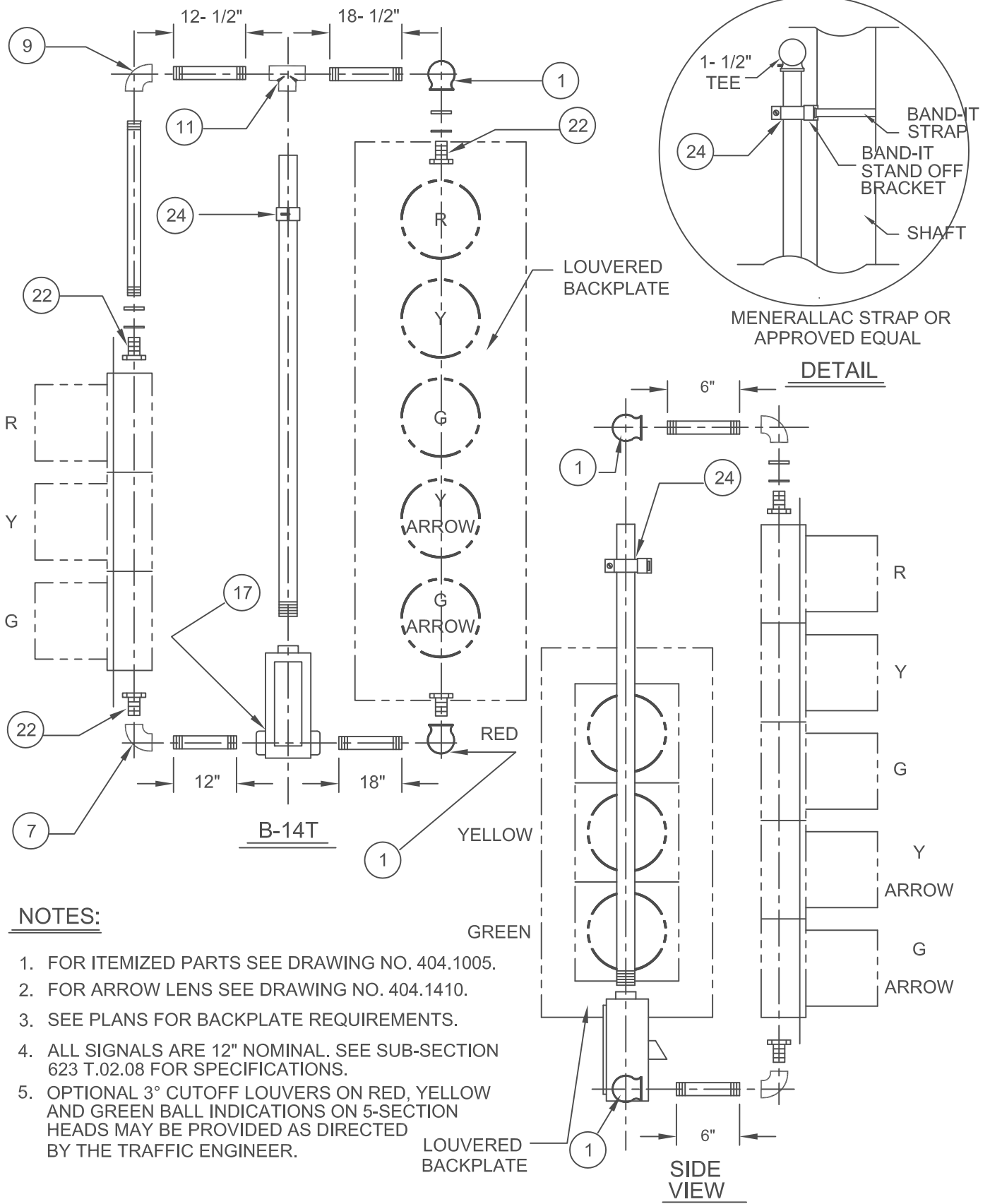
SPECIFICATION REFERENCE		UNIFORM STANDARD DRAWINGS CLARK COUNTY AREA		
		BILL OF MATERIALS SIGNAL ASSEMBLIES		
		DATE : 10-9-08	DWG. NO. 404.1005	SHEET 1 OF 1



NOTES:

- 1. SEE DRAWING NO. 404.1005 FOR ITEMIZED PARTS.
- 2. SEE DRAWING NO. 404.1410 FOR ARROW LENS.
- 3. ALL INDICATIONS ARE 12" NOMINAL . SEE SUB-SECTION 623 T.02.08 FOR SPECIFICATIONS.
- 4. SEE SIGNAL PLANS FOR BACKPLATE REQUIREMENTS.
- 5. SEE SIGNAL PLANS FOR R OR RED ARROW INDICATION.
- 6. ALL BOTTOM NIPPLES ARE 18" AND TOP NIPPLES ARE 18 1/2".

SPECIFICATION REFERENCE	UNIFORM STANDARD DRAWINGS CLARK COUNTY AREA		
	SIGNAL ASSEMBLIES B-1T, B-2T, B-3T		
	DATE:10-9-08	DWG. NO. 404.1024	SHEET 1 OF 1



NOTES:

1. FOR ITEMIZED PARTS SEE DRAWING NO. 404.1005.
2. FOR ARROW LENS SEE DRAWING NO. 404.1410.
3. SEE PLANS FOR BACKPLATE REQUIREMENTS.
4. ALL SIGNALS ARE 12" NOMINAL. SEE SUB-SECTION 623 T.02.08 FOR SPECIFICATIONS.
5. OPTIONAL 3° CUTOFF LOUVERS ON RED, YELLOW AND GREEN BALL INDICATIONS ON 5-SECTION HEADS MAY BE PROVIDED AS DIRECTED BY THE TRAFFIC ENGINEER.

SPECIFICATION REFERENCE	

UNIFORM STANDARD DRAWINGS
CLARK COUNTY AREA

**SIGNAL ASSEMBLIES
B-14T**

DATE : 10-9-08 | DWG. NO. 404.1029 | SHEET 1 OF 1