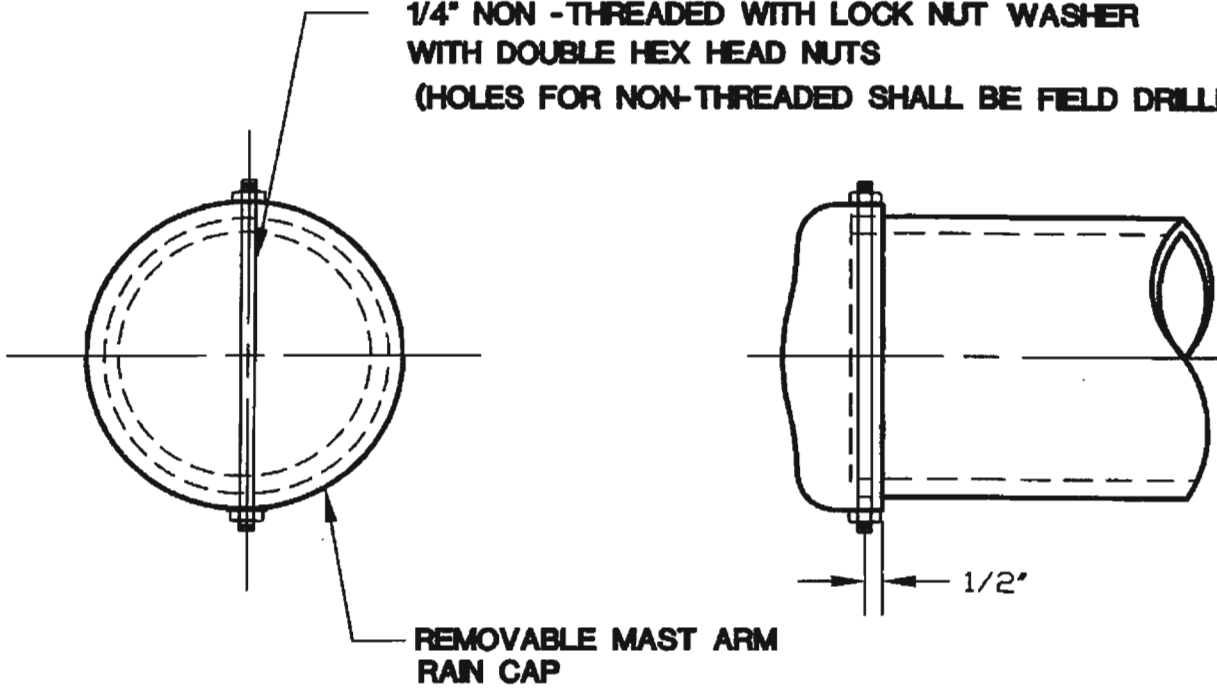


**UNIFORM STANDARD DRAWINGS
CLARK COUNTY AREA**

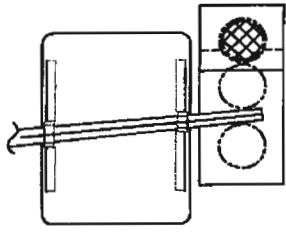
VOLUME II - YEAR 2005 REVISIONS

Drawing Number	Title	Nature of Change	Effective Date
404.406A	Removable Mast Arm End Cap Detail	Addition of new drawing to include additional drawing to detail methods of securing the mast arm end cap.	7/1/2005
404.410	30' Pole With School Flashing Sign	Revision to reflect the use of M-2A and M-2B signal head standards and the use of standard traffic signal poles.	7/1/2005
404.411		DELETED - See No. 404.410	7/1/2005
404.412	School Sign Pole Type XX-A	Revision to reflect the approved signal head configuration of school flasher assemblies.	7/1/2005
404.413		DELETED - See No. 404.410	7/1/2005
404.1023A1	School Flasher Mast Arm Signal Assemblies M-2A (Sheet 1 of 2) and M-2B (Sheet 2 of 2)	Addition of new drawings to detail the mounting of reverse mounted indication light on school flashers.	7/1/2005

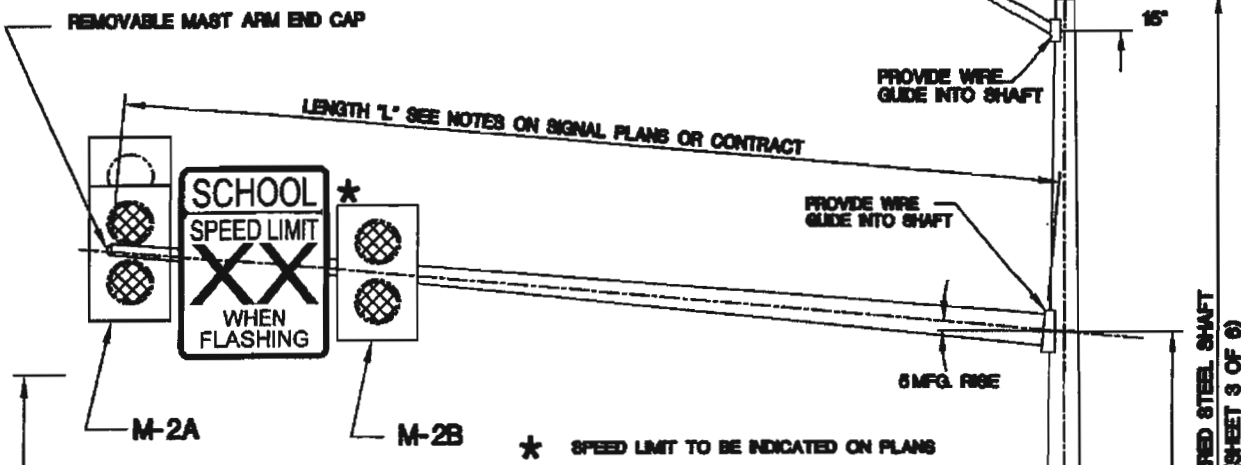
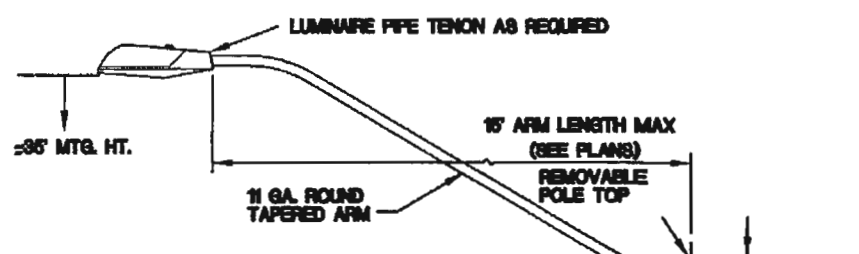
1/4" NON -THREADED WITH LOCK NUT WASHER
 WITH DOUBLE HEX HEAD NUTS
 (HOLES FOR NON-THREADED SHALL BE FIELD DRILLED)



SPECIFICATION REFERENCE		UNIFORM STANDARD DRAWINGS CLARK COUNTY AREA			
623	TRAFFIC SIGNALS & STREET LIGHTING				
		REMOVABLE MAST ARM END CAP DETAIL			
		DATE 05-19-05	DWG. NO. 404.406A	SHEET	1 OF 1



BACK VIEW OF SIGN



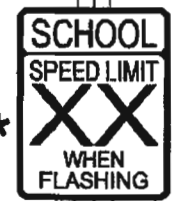
NOTES

1. ALL POLES TO BE HOT-DIP GALVANIZED BY MANUFACTURER OR PRIME PAINTED BY MANUFACTURER AND FINISH PAINTED BY CONTRACTOR PER SPECIFICATIONS AND AS REQUIRED BY THE ENTITY.
2. FOR MAST ARM TENON MOUNTING AND SPACING AND ADDITIONAL INFORMATION REFER TO STANDARD DRAWING NO. 404.412

FOR OTHER DETAILS SEE DRAWING NUMBER 404.408 SHT 2 & 3

FOR 'H' TYPE FOUNDATION SEE DRAWING NO. 404.208

4' X 7' (INSIDE DIM) HANDHOLE AND COVER (SHALL FACE AWAY FROM ONCOMING TRAFFIC)
 BASE COVER

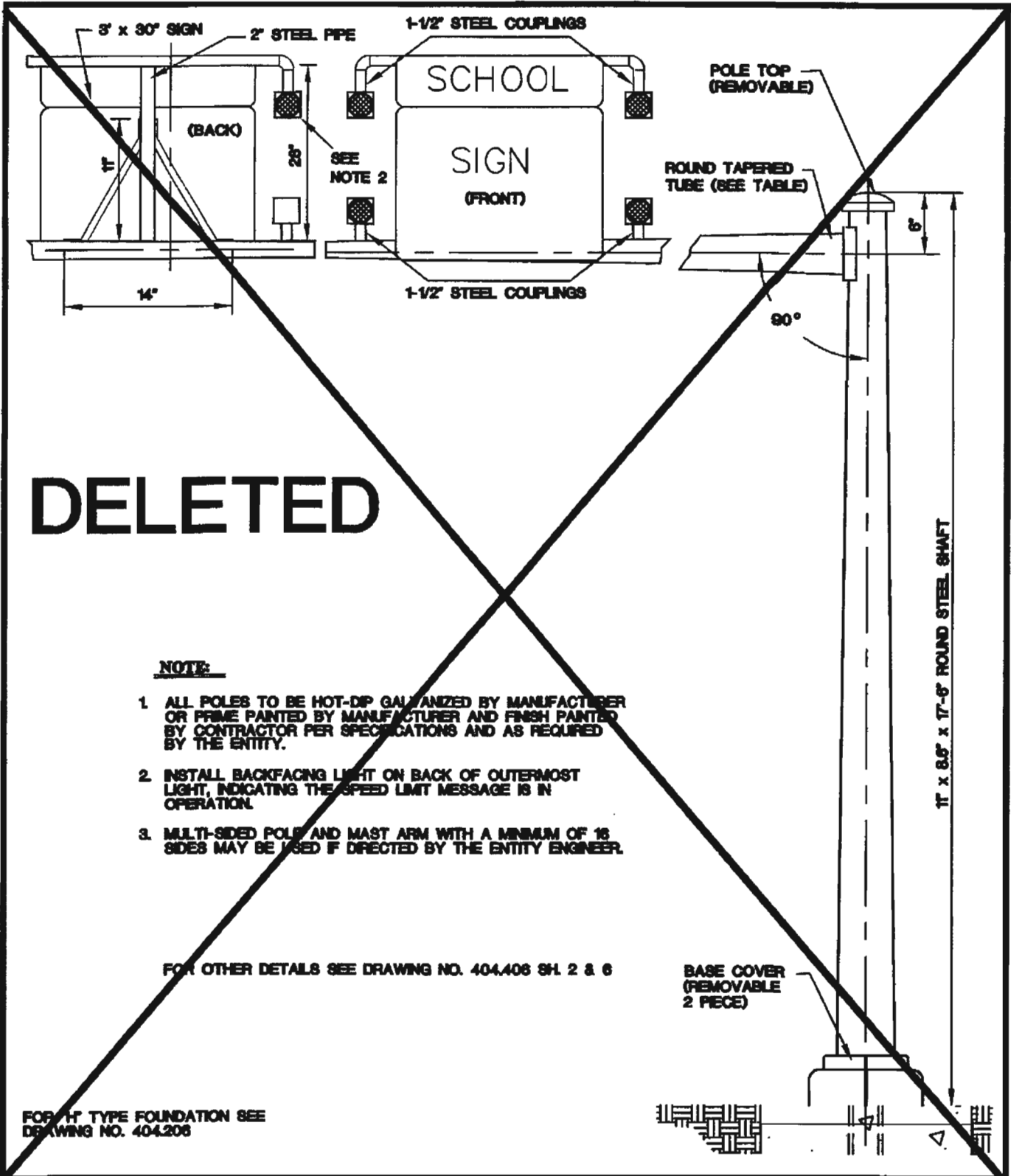


IN THE CITY OF NORTH LAS VEGAS, USE ONLY XX-A POLE DWG. 404.408 SHT 3 & 6
 FOR 'L' FOUNDATION SEE DWG. 404.209

30' ROUND TYPE XX-A TAPERED STEEL SHAFT
 SAME AS DWG. 404.408 (SHEET 3 OF 6)

SPECIFICATION REFERENCE	

CLARK COUNTY AREA		
30' POLE WITH SCHOOL FLASHING SIGN		
DATE 05-19-05	DWG. NO. 404.410	SHEET 1 OF 1



DELETED

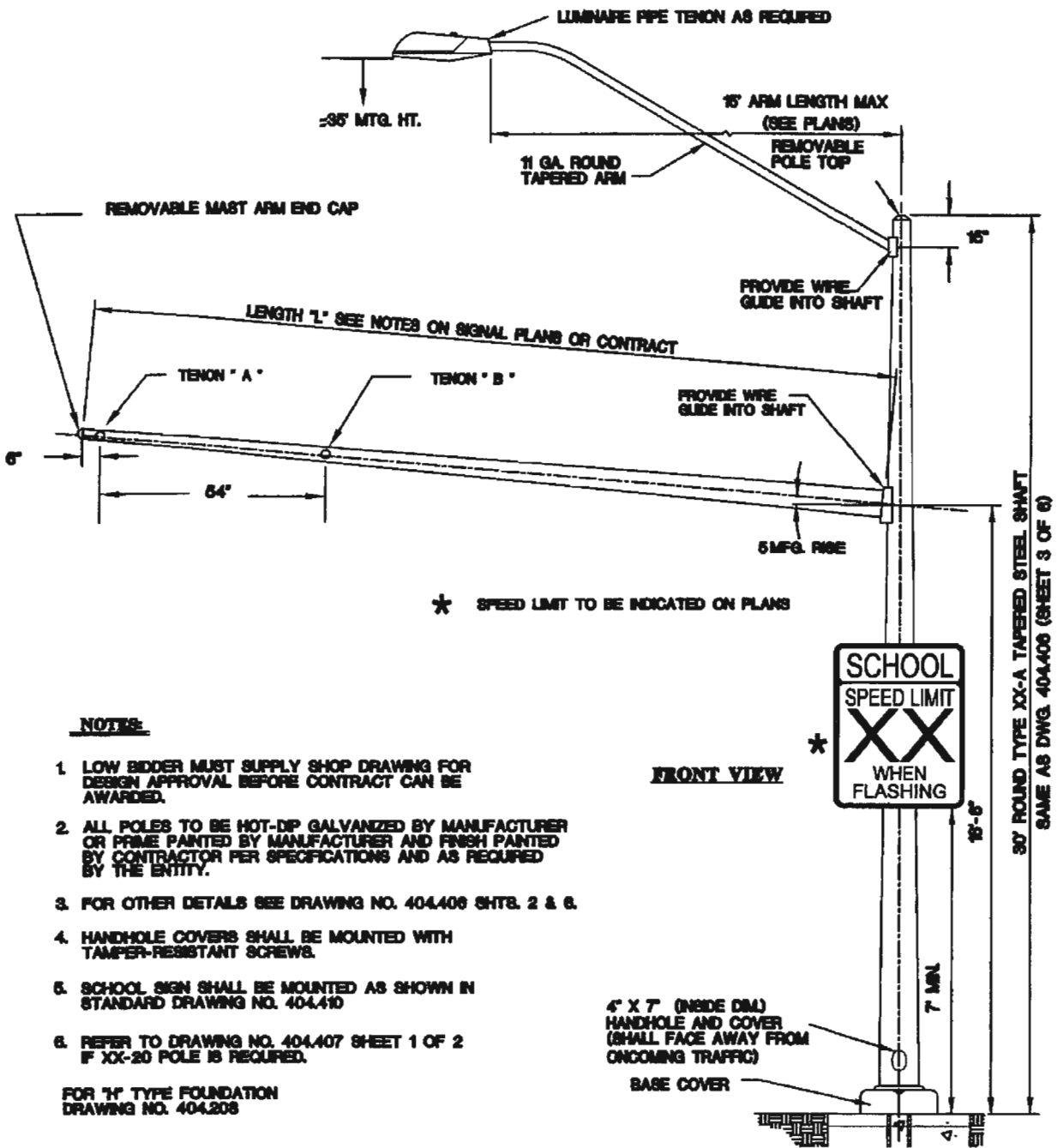
NOTE:

1. ALL POLES TO BE HOT-DIP GALVANIZED BY MANUFACTURER OR PRIME PAINTED BY MANUFACTURER AND FINISH PAINTED BY CONTRACTOR PER SPECIFICATIONS AND AS REQUIRED BY THE ENTITY.
2. INSTALL BACKFACING LIGHT ON BACK OF OUTERMOST LIGHT, INDICATING THE SPEED LIMIT MESSAGE IS IN OPERATION.
3. MULTI-SIDED POLE AND MAST ARM WITH A MINIMUM OF 16 SIDES MAY BE USED IF DIRECTED BY THE ENTITY ENGINEER.

FOR OTHER DETAILS SEE DRAWING NO. 404.408 SH. 2 & 6

FOR T-TYPE FOUNDATION SEE DRAWING NO. 404.206

SPECIFICATION REFERENCE	UNIFORM STANDARD DRAWINGS CLARK COUNTY AREA	
	SCHOOL SIGN MOUNTED ON TRAFFIC SIGNAL STANDARD	
	DATE 06-19-05	DWG. NO. 404.411
	SHEET 1 OF 1	



NOTES:

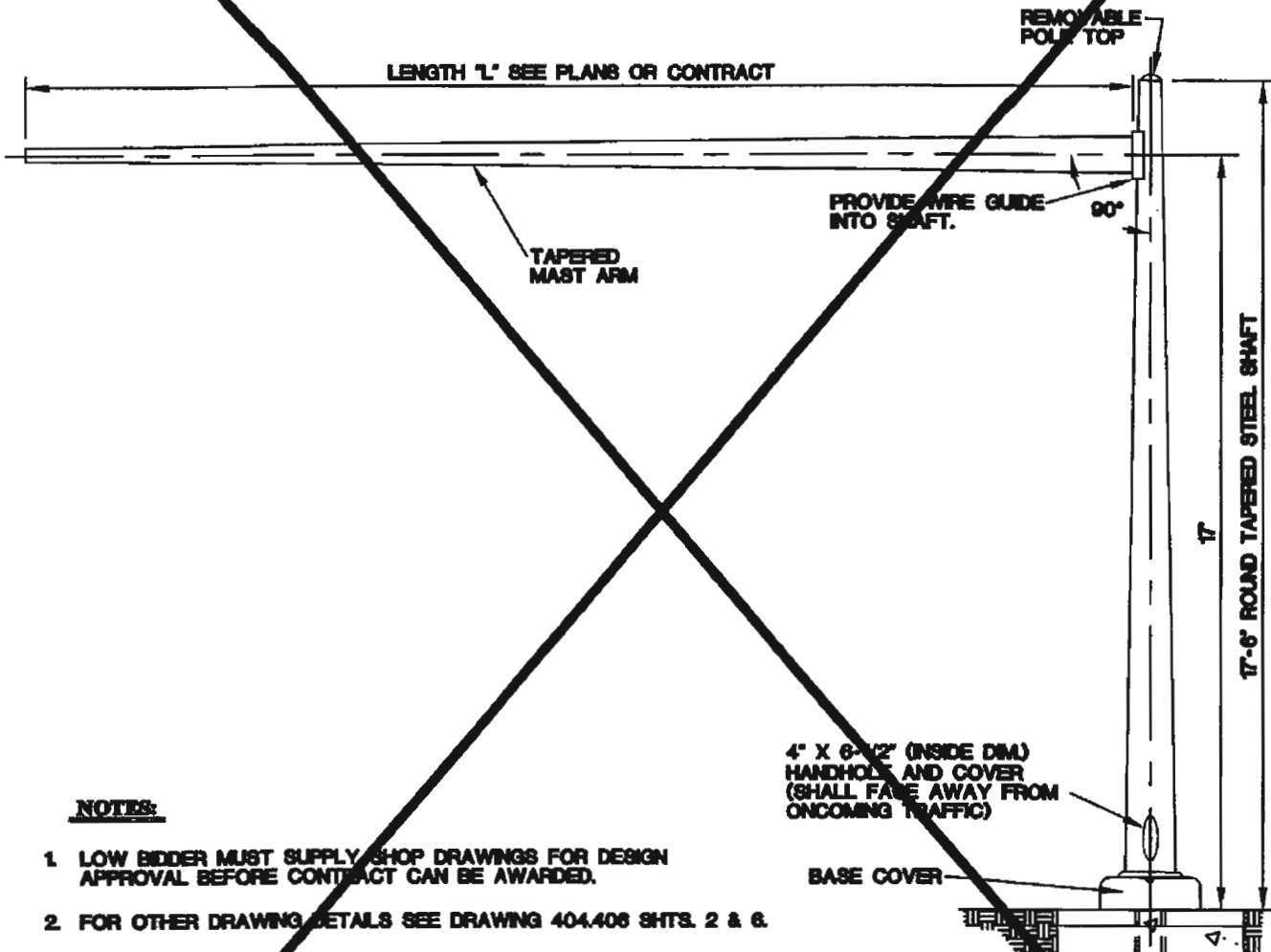
1. LOW BIDDER MUST SUPPLY SHOP DRAWING FOR DESIGN APPROVAL BEFORE CONTRACT CAN BE AWARDED.
2. ALL POLES TO BE HOT-DIP GALVANIZED BY MANUFACTURER OR PRIME PAINTED BY MANUFACTURER AND FINISH PAINTED BY CONTRACTOR PER SPECIFICATIONS AND AS REQUIRED BY THE ENTITY.
3. FOR OTHER DETAILS SEE DRAWING NO. 404.408 SHTS. 2 & 6.
4. HANDHOLE COVERS SHALL BE MOUNTED WITH TAMPER-RESISTANT SCREWS.
5. SCHOOL SIGN SHALL BE MOUNTED AS SHOWN IN STANDARD DRAWING NO. 404.410
6. REFER TO DRAWING NO. 404.407 SHEET 1 OF 2 IF XX-20 POLE IS REQUIRED.

FOR 'H' TYPE FOUNDATION
DRAWING NO. 404.208

IN THE CITY OF NORTH LAS VEGAS, USE ONLY XX-A POLE DWG. 404.408 SHT 3 & 6
FOR 'L' FOUNDATION SEE DWG. 404.208

SPECIFICATION REFERENCE	CLARK COUNTY AREA		
	SCHOOL SIGN POLE TYPE XX-A		
	DATE 05-19-05	DWG. NO. 404.412	SHEET 1 OF 1

DELETED

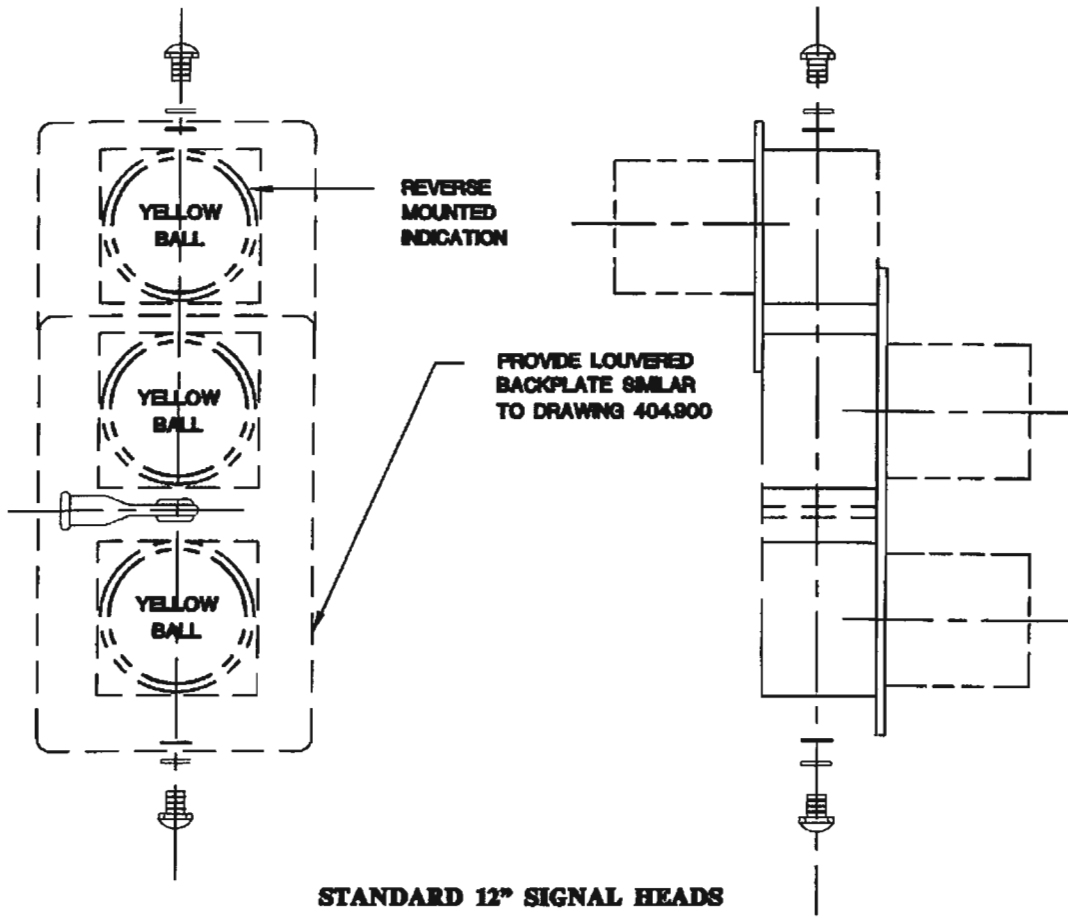


NOTES:

1. LOW BIDDER MUST SUPPLY SHOP DRAWINGS FOR DESIGN APPROVAL BEFORE CONTRACT CAN BE AWARDED.
2. FOR OTHER DRAWING DETAILS SEE DRAWING 404.406 SHTS. 2 & 6.
3. ALL POLES TO BE HOT-DIP GALVANIZED BY MANUFACTURER OR PRIME PAINTED BY MANUFACTURER AND FINISH PAINTED BY CONTRACTOR PER SPECIFICATIONS AND AS REQUIRED BY THE ENTITY.
4. HANDHOLE COVERS SHALL BE MOUNTED WITH TAMPER RESISTANT SCREWS.
5. SCHOOL SIGN SHALL BE MOUNTED AS SHOWN IN STANDARD DRAWING NO. 404.41L.
6. MULTI-SIDED POLE AND MAST ARM WITH A MINIMUM OF 16 SIDES MAY BE USED IF DIRECTED BY THE ENTITY ENGINEER.

FOR T7 TYPE FOUNDATION SEE DWG. NO. 404.208.

SPECIFICATION REFERENCE	UNIFORM STANDARD DRAWINGS CLARK COUNTY AREA	
	SCHOOL SIGN POLE TYPE XX-20'	
	DATE 05-19-05	DWG. NO. 404.413
	SHEET 1 OF 1	



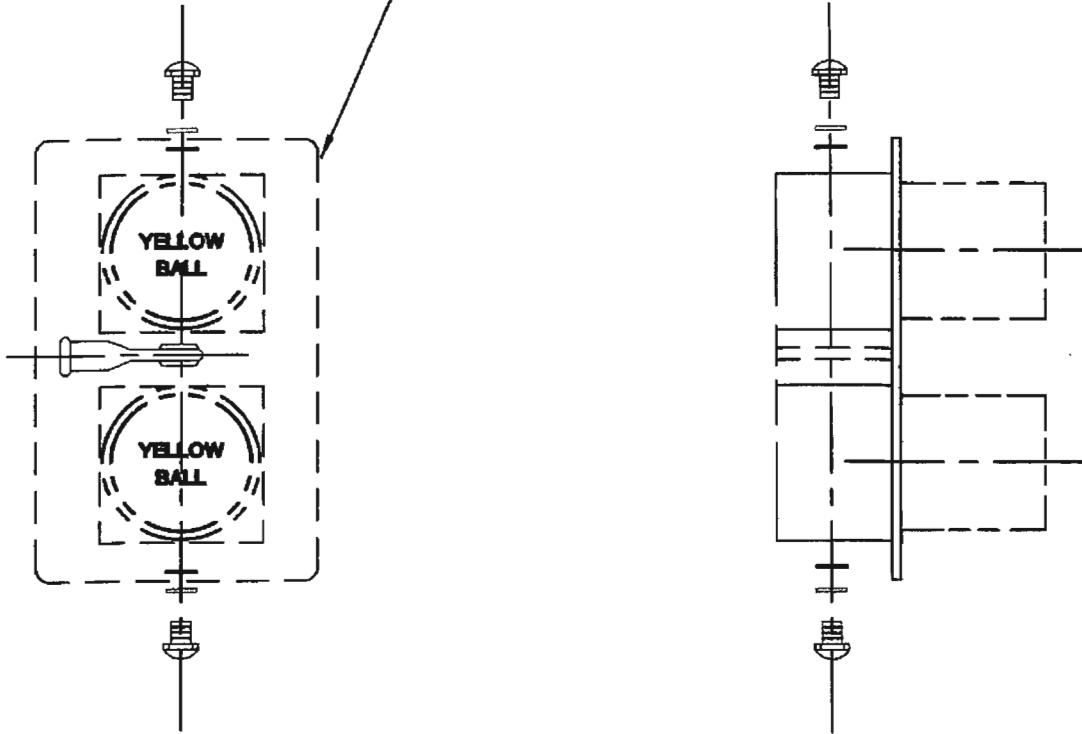
**STANDARD 12" SIGNAL HEADS
M-2A**

NOTES:

1. ALL INDICATIONS ARE TO BE YELLOW LED BALLS.
2. ALL M-2A INDICATIONS ARE 12" NOMINAL.
3. CIRCULAR VISORS TO BE INSTALLED ON ALL HEADS.
4. SEE SIGNAL PLANS FOR MAST ARM TENON LOCATIONS.
5. THIS HEAD ASSEMBLY SHALL BE USED ONLY ON THE END OF THE MAST ARM.

SPECIFICATION REFERENCE	UNIFORM STANDARD DRAWINGS CLARK COUNTY AREA		
	SCHOOL FLASHER MAST ARM SIGNAL ASSEMBLIES M-2A		
	DATE 03-10-05	DWG. NO. 404.1023A1	SHEET 1 OF 2

PROVIDE LOUVERED
BACKPLATE SIMILAR
TO DRAWING 404.900



**STANDARD 12" SIGNAL HEADS
M-2B**

NOTES:

1. ALL INDICATIONS ARE TO BE YELLOW LED BALLS.
2. ALL M-2B INDICATIONS ARE 12" NOMINAL.
3. CIRCULAR VISORS TO BE INSTALLED ON ALL HEADS.
4. SEE SIGNAL PLANS FOR MAST ARM TENON LOCATIONS.

SPECIFICATION REFERENCE	UNIFORM STANDARD DRAWINGS CLARK COUNTY AREA		
	SCHOOL FLASHER MAST ARM SIGNAL ASSEMBLIES M-2B		
	DATE 03-10-05	DWG. NO. 404.1023A1	SHEET 2 OF 2