

**UNIFORM STANDARD DRAWINGS
CLARK COUNTY AREA**

VOLUME II - YEAR 2003 REVISIONS

<u>DRAWING NUMBER AND TITLE</u>	<u>SHEET NUMBER(S)</u>	<u>NATURE OF CHANGE</u>	<u>EFFECTIVE DATE</u>
404.132 "P30" Pull box	1	New Drawing. Pull box drawing added for communications infrastructure.	6/1/03
404.133 "P200" Pull box	1	New Drawing. Pull box drawing added for communications infrastructure.	"
404.1306 Typical Traffic Signal Underground Layout with Interim Street Lighting and Service Pedestal (Center of Curve Radius)	1	Revisions to accommodate communications infrastructure.	"
404.1306 Typical Traffic Signal Underground Layout with Interim Street Lighting and Service Pedestal (End of Curve Radius)	2	Revisions to accommodate communications infrastructure.	"
404.1300 Pole Location and Signal Mounting at Intersection (Two Pole) Curbside Sidewalk	1	Revisions to existing drawings to incorporate pedestrian and bicycle improvements resulting from the Alternative Modes Needs Assessment for the Las Vegas Valley.	8/1/03
404.1300 Pole Location and Signal Mounting at Intersection (Single Pole) Curbside Sidewalk	2	"	"

<u>DRAWING NUMBER AND TITLE</u>	<u>SHEET NUMBER(S)</u>	<u>NATURE OF CHANGE</u>	<u>EFFECTIVE DATE</u>
404.1300ALT Pole Location and Signal Mounting at Intersection (Two Pole) Offset Sidewalk	1	New drawings to incorporate pedestrian and bicycle improvements resulting from the Alternative Modes Needs Assessment for the Las Vegas Valley.	8/1/03
404.1300ALT Pole Location and Signal Mounting at Intersection (Single Pole) Offset Sidewalk	2	“	“

Revised February 2004

FOREWORD

UNIFORM STANDARD DRAWINGS FOR PUBLIC WORKS' CONSTRUCTION, OFFSITE IMPROVEMENTS, CLARK COUNTY AREA, NEVADA VOLUME II

The Uniform Standard Drawings for Public Works Construction may be revised by issuance of revisions or supplements to correct errors and omissions found in these drawings and to reflect advanced thinking and the changing technology of the construction industry. Each revision will supersede any previous pertinent drawing. Upon approval by the Regional Transportation Commission, revisions will be posted to the RTC website, www.rtcsonthernnevada.com, on the first day of the month following the meeting. **This volume contains all revisions through December 2003.**

To implement this end a Specifications Committee has been established as a permanent organization to continually study and recommend changes to the standard drawings. Interested parties may address suggested changes and questions to the Regional Transportation Commission, 600 South Grand Central Parkway, Suite 350, Las Vegas, Nevada, 89106-4512.

UNIFORM STANDARD DRAWINGS, CLARK COUNTY AREA

TABLE OF CONTENTS

VOLUME II TRAFFIC SIGNALS

DRAWING NUMBER

SYMBOLS

404.001	Standard Symbols for Traffic Signal Drawings (2 sheets)
404.002	Quadrant Detail

PULL BOXES

404.110	No. 3 1/2 Pull Box
404.120	No. 5 Pull Box
404.121	Reinforced Plastic Mortar Service Box Assembly #5
404.130	No. 7 Pull Box
404.131	Reinforced Plastic Mortar Service Box Assembly #7
404.132	"P10" Pull Box
404.133	"Type 200" Pull Box
404.139	Steel Pull Boxes
404.140(SH1)	Pull Box Street Cover
404.140(SH2)	Pull Box Cover Bonding Detail
404.141	Pull Box Foundation

FOUNDATIONS

404.201	Type "A" Foundation
404.202	Type "B" Foundation
404.203	Type "C" Foundation
404.204	DELETED
404.205	Type "E" Foundation
404.206	Type "F" Foundation
404.207	Type "G" Foundation
404.208	Type "H" Foundation
404.209	Type "L" Foundation
404.210	Type "M" Foundation
404.211	Type "I" Foundation
404.213	Type "J" and "K" Foundation
404.214	Service Pedestal Foundation

**VOLUME II
TRAFFIC SIGNALS
CONTINUED**

DRAWING NUMBER

CABINET

404.304	Type V Cabinet
404.305	Type VI Cabinet
404.307	Type VIII Cabinet
404.308	Type IX Cabinet
404.309	Flashing Beacon Controller Cabinet
404.310	Wiring Diagram for Flashing Beacon Timer Controlled Operation

PRIORITY VEHICLE PREEMPTION SYSTEM

404.320	DELETED - See Uniform Standard Specifications Subsection 623T.02.12
---------	--

POLES AND POSTS

404.400(SH1)	School Flashing Sign on Pole with Luminaire
404.400(SH2)	School Flashing Sign on Type-III Pole
404.401(SH1)	Pedestrian Push Button Post for Special Sign (8'-6")
404.401(SH2)	Pedestrian Push Button Post for 2-½" Post Top Mounting
404.402	Signal Standard Type 1-A, 1-B
404.403	Sign Post with School Sign Mounted (2 sheets)
404.404	DELETED
404.405	Pedestal for Controller Cabinets
404.406	Type XX & XX-A -- 30' Signal and Luminaire Pole (6 sheets)
404.407(SH1)	Type XX -- 20' Signal Pole (45' or Less Mast Arms)
404.407(SH2)	Type XXA -- 20'-0" (50' through 60' Mast Arms) Signal Pole
404.408	DELETED
404.409(SH1)	Base Adaptor Plate for Type "H" Foundation
404.409(SH2)	Base Adaptor Plate for Type "L" Foundation
404.410	30' Luminaire with School Flashing Sign
404.411	School Sign Mounted on a Traffic Signal Standard
404.412	School Sign Pole Type XX -- 30'
404.413	School Sign Pole Type XX -- 20'
404.414	Streetlighting Pole with Illuminated Street Name Sign

**VOLUME II
TRAFFIC SIGNALS
CONTINUED**

DRAWING NUMBER

POLES AND POSTS (CON'T)

404.415	Type III Pole with Illuminated Street Name Sign
404.416	Type XX Pole with Illuminated Street Name Sign
404.417	Street Name Sign Internally Illuminated
404.418	Sign Mounting Illustration
404.420	Block Number Sign

MAST ARMS AND ASSEMBLIES

404.500	DELETED
404.501	DELETED
404.502	One Bolt Simplex Arm Attachment Clamp Assembly
404.503	Retrofit Streetlight Mast Arm

DRILLING DETAILS

404.600	Pole Drilling Details
404.601	Island Signal Pole Details for 10' Pole

ISLAND EQUIPMENT

404.700	Island Signal Location
---------	------------------------

DETECTORS

404.800	DELETED - See Uniform Standard Specifications Subsection 623T.02.04
404.801	DELETED - See Uniform Standard Specifications Subsection 623T.02.04
404.810	Sawcut Details for Induction Loops
404.811	Details at Loop Pull Box
404.820	1 Induction Loop for 1 Travel Lane
404.821(SH1)	1 Induction Loop for 2 Travel Lanes
404.821(SH2)	2 Induction Loops for 2 Travel Lanes
404.822(SH1)	1 Induction Loop for 3 Travel Lanes
404.822(SH2)	3 Induction Loops for 3 Travel Lanes

**VOLUME II
TRAFFIC SIGNALS
CONTINUED**

DRAWING NUMBER

DETECTORS (CON'T)

404.823(SH1)	1 Induction Loop for 4 Travel Lanes
404.823(SH2)	4 Induction Loops for 4 Travel Lanes
404.825	3 Induction Loops for 3 Travel Lanes
404.826	Multiple Loop System for Thru Lane
404.827	Multiple Loop System for Left Turn Pocket
404.828	Type "Quadrupole" Loop Installation
404.829	Wire Diagrams for Multiple Loop Systems for Left Turn Pocket and Thru Lane
404.830	Circular Induction Loops for Travel Lanes
404.851	Pedestrian Push Button Detectors

BACK PLATES

404.900	Louvered Backplate for Mast Arm Mounted Signal
404.901	Louvered Backplate for Pole Mounted Signal
404.902	Louvered Backplate for 5 Section Signal Head
404.903	Louvered Backplate for 5 Section Signal Head

SIGNAL UNITS

404.1005	Bill of Materials - Signal Assemblies
----------	---------------------------------------

SIGNAL ASSEMBLIES

404.1011	Types: A-1, A-2T, A-3
404.1012	Types: A-4T, A-5T
404.1013	Type: A-6T
404.1015	Types: A-8T, A-9T
404.1016	Types: A-10T, A-11T
404.1017	Types: A-12T, A-13T
404.1018	Types: A-14T, A-15T
404.1019	Type: A-16T
404.1020	Type: A-17T

**VOLUME II
TRAFFIC SIGNALS
CONTINUED**

DRAWING NUMBER

MAST ARM SIGNAL ASSEMBLIES

404.1022 Types: M-2A, M-3A
404.1023 Types: M-3, M-2

SIGNAL ASSEMBLIES

404.1024 Types: B-1T, B-2T, B-3T
404.1025 Types: B-5T, B-6T
404.1026 Types: B-7T, B-8T, B-9T
404.1027 Types: B-10, B-11T
404.1028 Types: B-12T, B-13T
404.1029 Type: B-14T
404.1030 Protective/Permissive M-5 Signal Heads
404.1031 Protective/Permissive M-5 Signal Heads, Assemblies and Part List
 (3 sheets)
404.1032 Pedestrian Signal Assemblies W-0T, W-1, W-2T, W-3T, W-1T
404.1033 DELETED
404.1034 Pedestrian Push Button Sign Detail

VISORS AND LOUVERS

404.1100(SH1) Visors for 8" Signal
404.1100(SH2) Louvers and Visors for 12" Signal
404.1100(SH3) Geometrically Programmed Louver
404.1101 Backplate and Signal Head Assembly

SIGNAL HARDWARE

404.1200 Miscellaneous Signal Mounting Hardware
404.1201 Pole Plate Details
404.1202 Miscellaneous Signal Mounting Hardware
404.1203 Elevator Plumbizer
404.1204 Pole Plate with Wire Guide Details
404.1205 4 Way Center Hub
404.1206 Standard Malleable Pipe Hardware -- 1½" IPS
404.1207 Post Top Mounted Adapter with Terminal Compartment
404.1208 Side Bracket Mounted Adapter with Wire Guide

**VOLUME II
TRAFFIC SIGNALS
CONTINUED**

DRAWING NUMBER

SIGNAL HARDWARE (CON'T)

- 404.1210 One Way Mount
- 404.1211 One Way Mount for 3M Signals
- 404.1212 One Way Mount Detail

EQUIPMENT ORIENTATION ON SIGNAL POLES

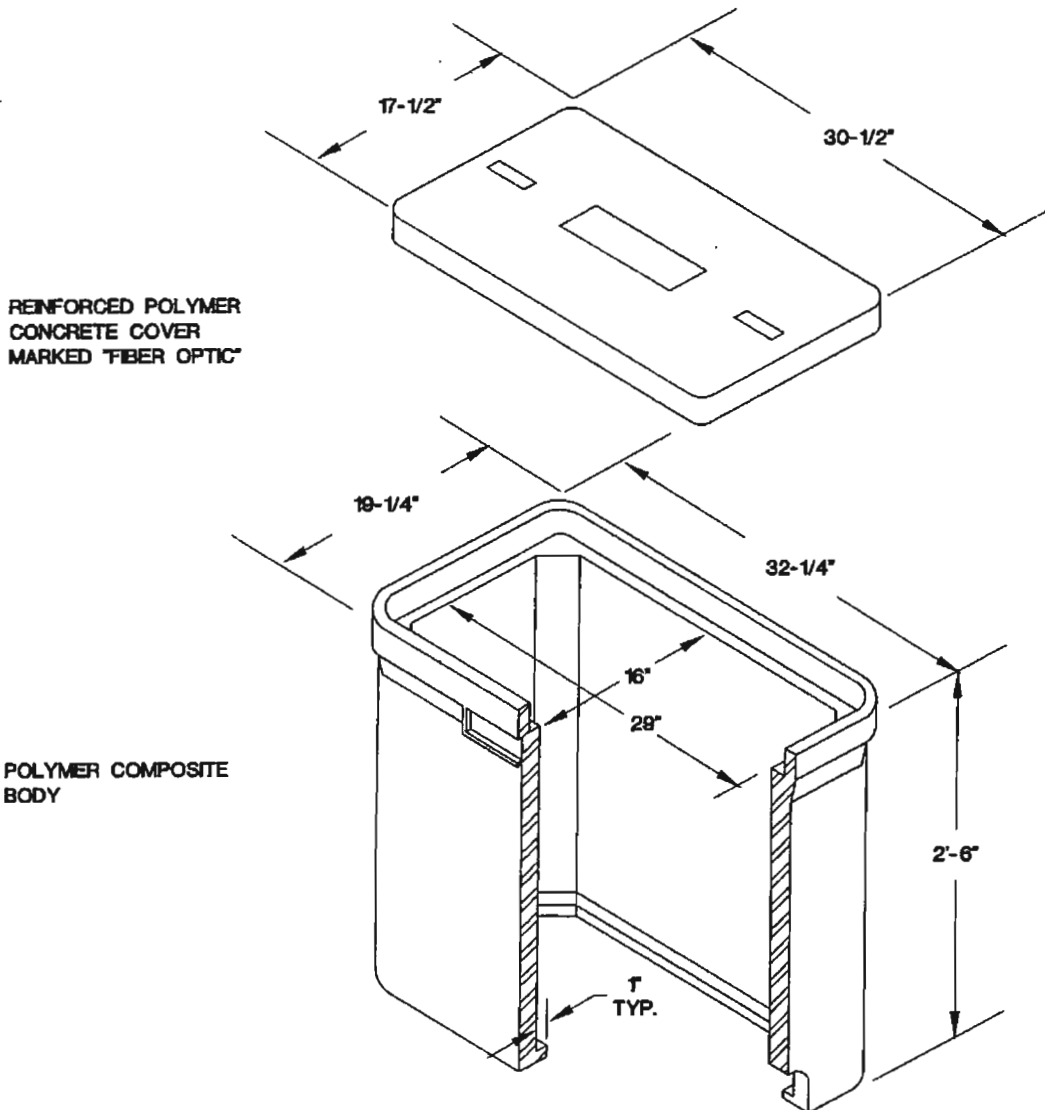
- ~~404.1300(SH1)~~ *Pole Location and Signal Mounting at Intersection (Two Pole Curbside Sidewalk)*
- ~~404.1300(SH2)~~ *Pole Location and Signal Mounting at Intersection (Single Pole Curbside Sidewalk)*
- ~~Alternate Standards for Offset Sidewalk~~
- ~~404.1300 ALT (SH1)~~ *Pole Location and Signal Mounting at Intersection (Two Pole Offset Sidewalk)*
- ~~404.1300 ALT (SH2)~~ *Pole Location and Signal Mounting at Intersection (Single Pole Offset Sidewalk)*
- 404.1301 Pole Location and Signals Mounting on Right Turn Islands
- 404.1302(SH1) Future Pole Location Case I (Except City of Las Vegas)
- 404.1302(SH2) Future Pole Location Case II
- ~~404.1306(SH1)~~ *Typical Traffic Signal Underground Layout with Interim Streetlighting and Service Pedestal (Center of Curve Radius)*
- ~~404.1306(SH2)~~ *Typical Traffic Signal Underground Layout with Interim Streetlighting and Service Pedestal (End of Curve Radius)*

MISCELLANEOUS

- 404.1410 12" Arrow Lens
- 404.1412 Single Meter Service Pedestal
- 404.1413 120/240 VAC Service on Wood Pole Overhead Service
- 404.1414 Auxiliary Cabinet Equipment Wiring
- 404.1418 Installation of Conduit into Pull Box from Lip of Gutter Trench
- 404.1419 Installation of Conduit
- 404.1422 DELETED - See Uniform Standard Specifications Subsection 623G.03.07

~~404.1411~~ - Denotes revised /added in 2003.

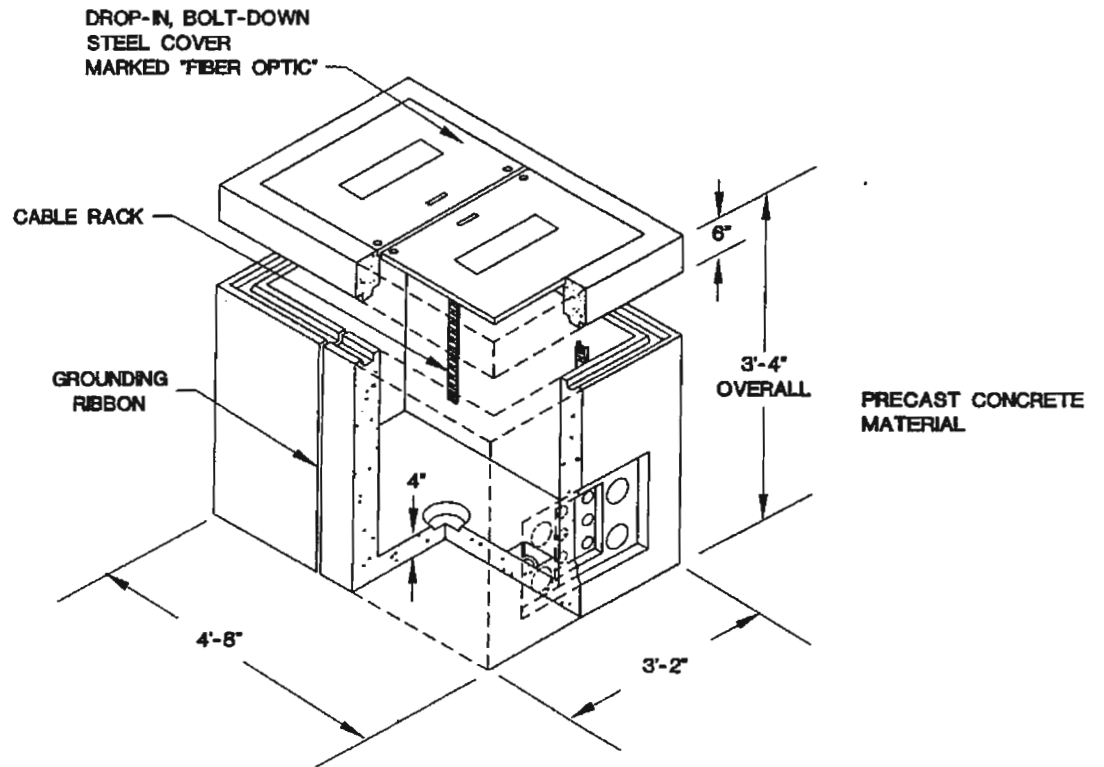
Revised February 2004



NOTES:

1. THIS PULL BOX SHALL NOT BE USED IN TRAVEL OR PARKING LANES.

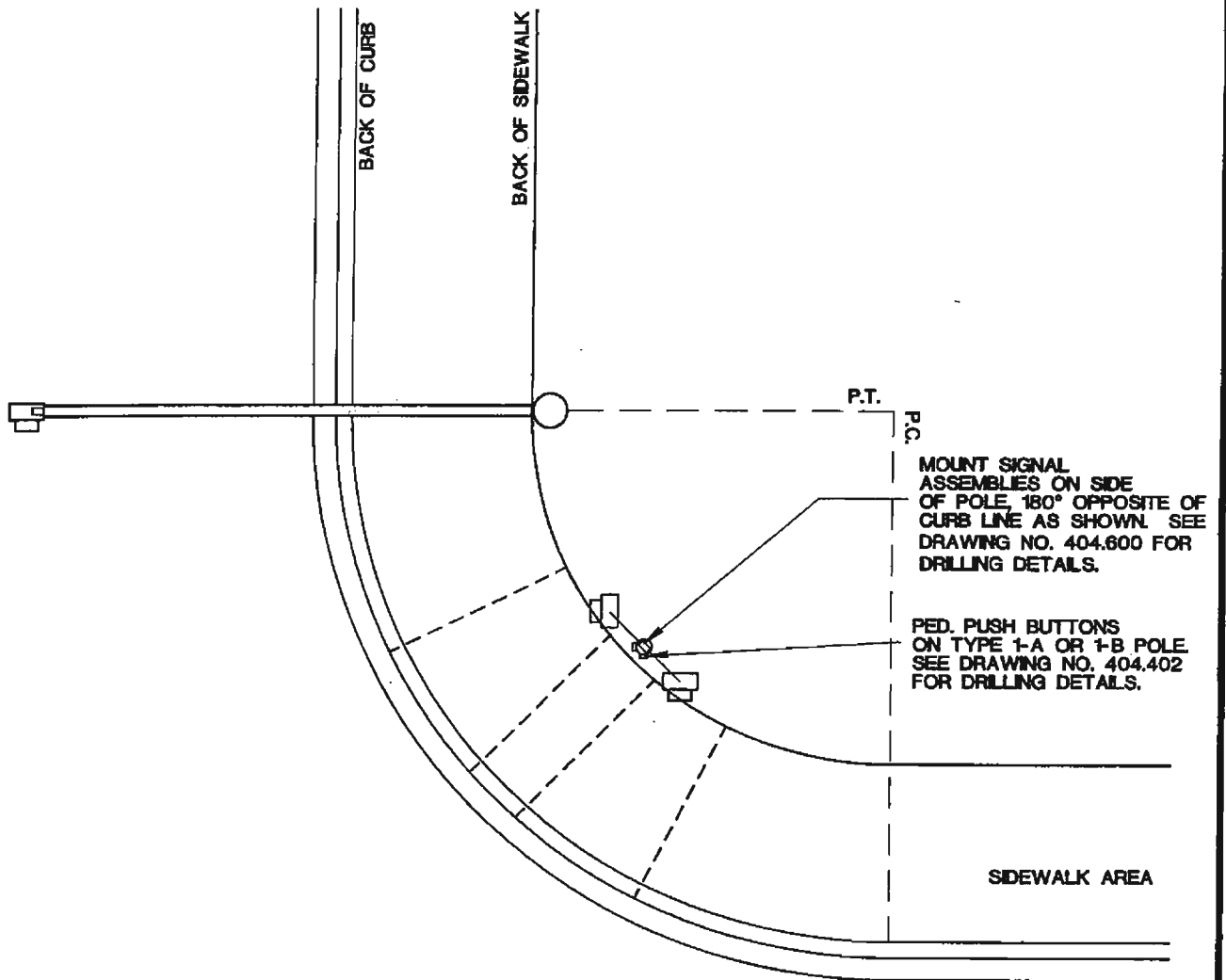
SPECIFICATION REFERENCE		UNIFORM STANDARD DRAWINGS CLARK COUNTY AREA	
		"P30" PULLBOX (FOR USE IN INTERCONNECT AND COMMUNICATIONS INSTALLATIONS)	
		DATE 3-13-03	DWG. NO. 404.132
		SHEET 1 OF 1	



NOTES:

1. DESIGN LOAD: H-20 WHEEL LOADINGS.
2. SUITABLE FOR USE IN OFF STREET LOCATIONS WHERE NOT SUBJECT TO HIGH DENSITY TRAFFIC. IT SHALL NOT BE USED IN TRAVEL OR PARKING LANES.
3. INSIDE DIMENSIONS - 30"X48"X36"

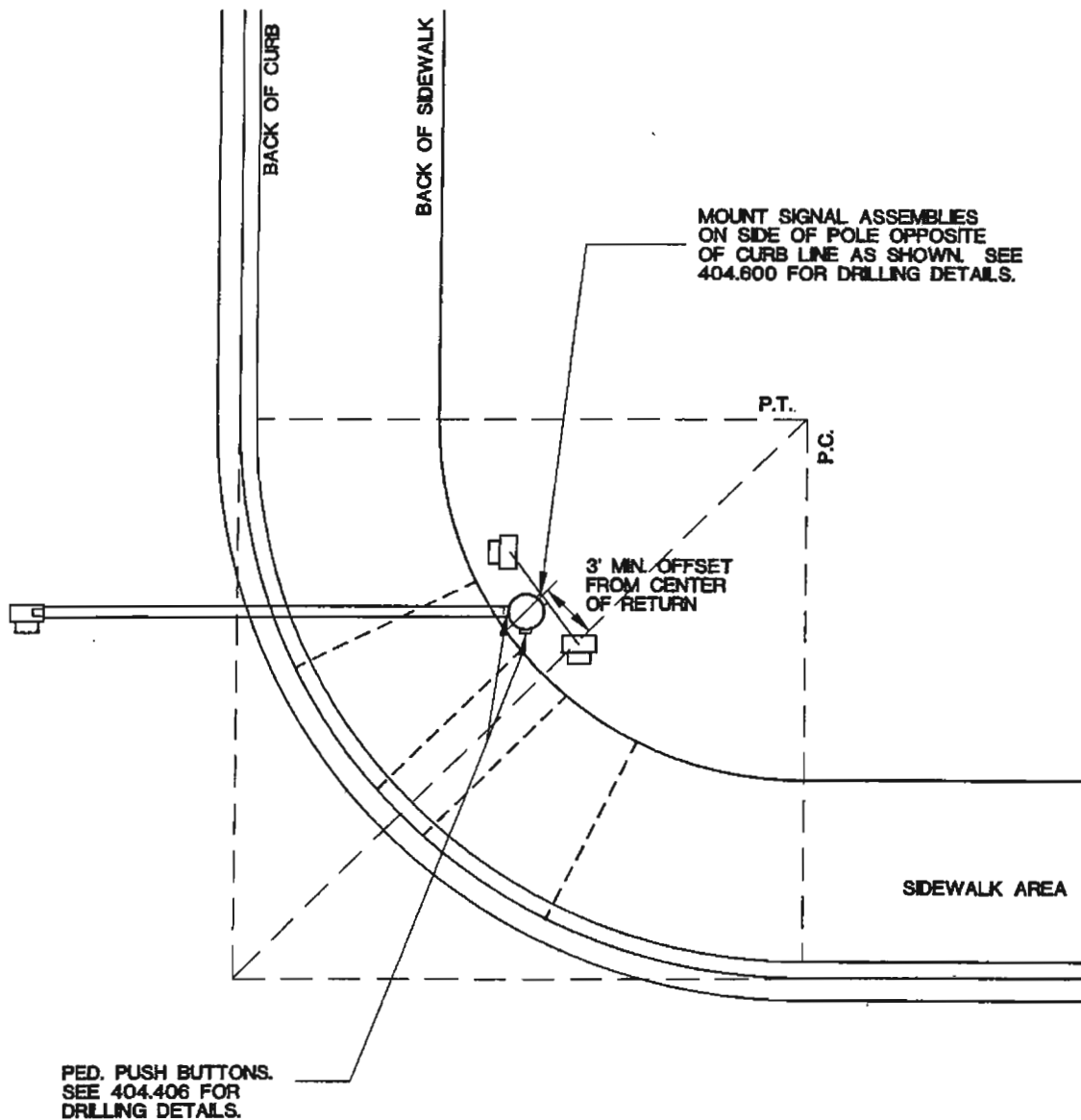
SPECIFICATION REFERENCE	UNIFORM STANDARD DRAWINGS CLARK COUNTY AREA		
	"TYPE 200" PULLBOX		
	(FOR USE AT FIBER OPTIC SPLICE POINTS)		
	DATE 3-13-03	DWG. NO. 404.133	SHEET 1 OF 1



NOTE:

1. ALTERNATE LOCATIONS FOR THE POLES MAY BE APPROVED BY THE AGENCY'S TRAFFIC ENGINEER.

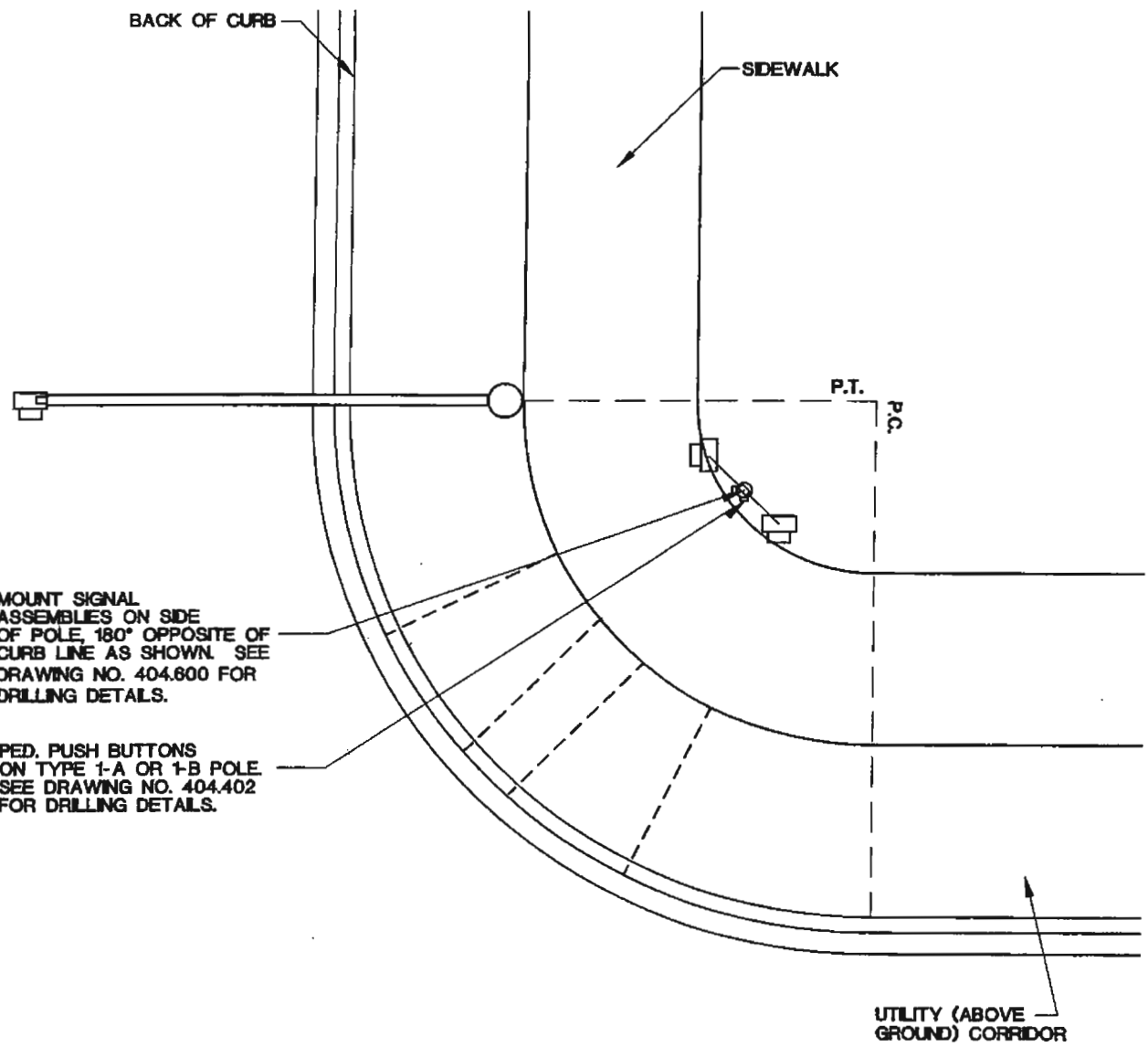
SPECIFICATION REFERENCE		UNIFORM STANDARD DRAWINGS CLARK COUNTY AREA		
		POLE LOCATION & SIGNAL MOUNTING AT INTERSECTION (TWO POLE) CURBSIDE SIDEWALK		
		DATE 7-10-03	DWG. NO. 404.1300	SHEET 1 OF 2



NOTE:

1. ALTERNATE LOCATIONS FOR THE SIGNAL POLE MAY BE APPROVED BY THE AGENCY'S TRAFFIC ENGINEER.

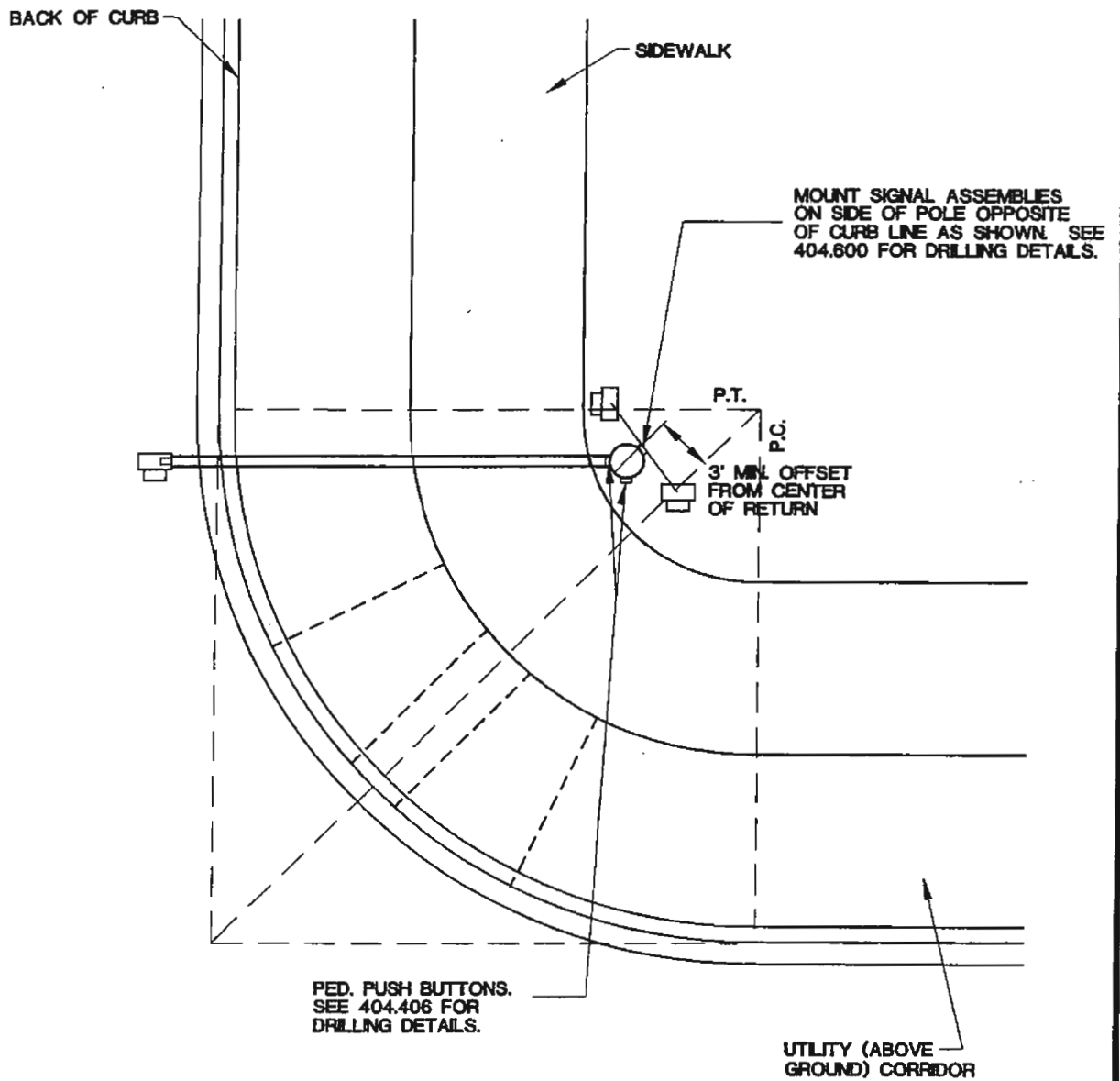
SPECIFICATION REFERENCE		UNIFORM STANDARD DRAWINGS CLARK COUNTY AREA		
		POLE LOCATION & SIGNAL MOUNTING AT INTERSECTION (SINGLE POLE) CURBSIDE SIDEWALK		
		DATE 7-10-03	DWG. NO. 404.1300	SHEET 2 OF 2



NOTE:

1. ALTERNATE LOCATIONS FOR THE POLES MAY BE APPROVED BY THE AGENCY'S TRAFFIC ENGINEER.

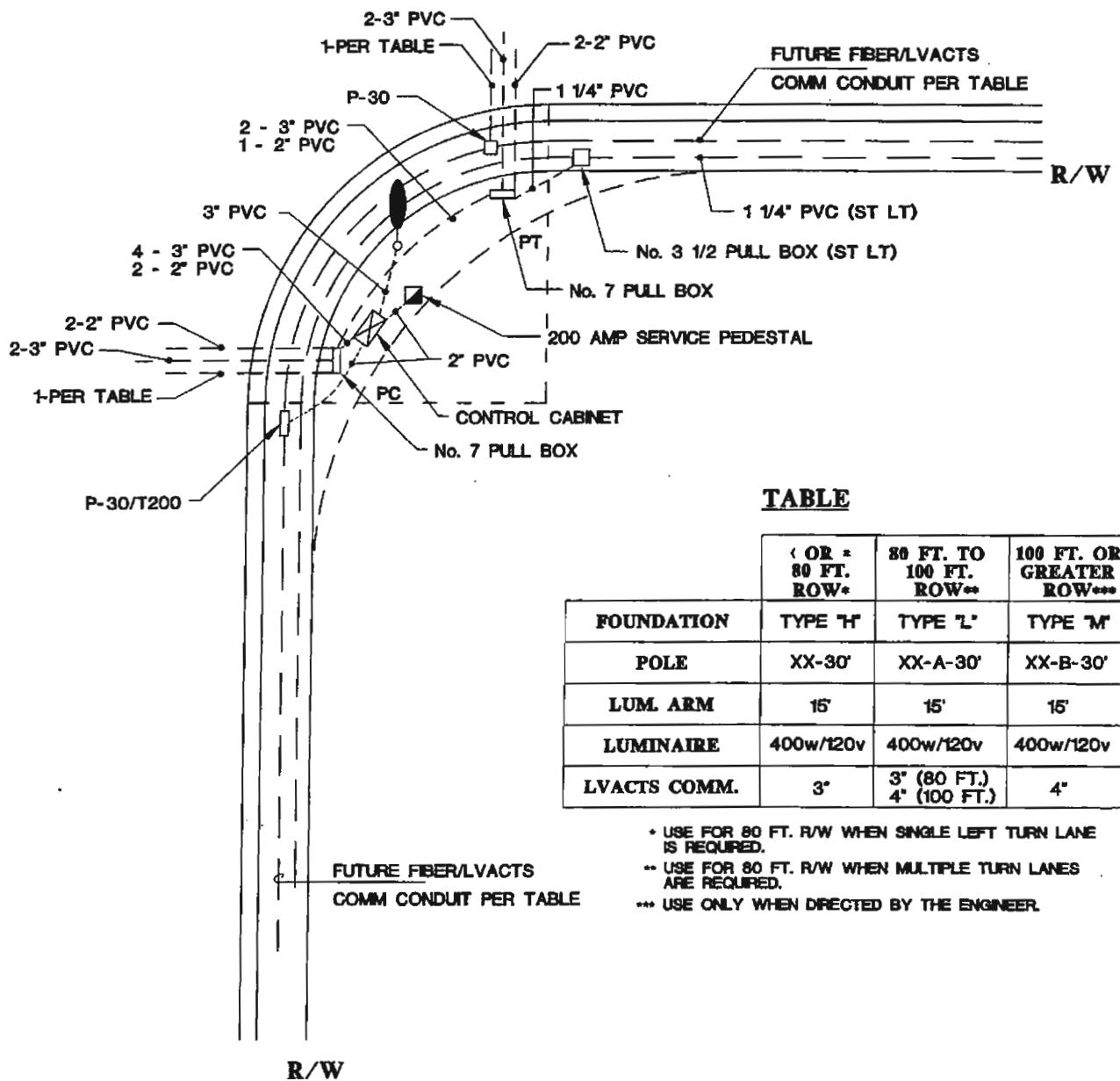
SPECIFICATION REFERENCE	UNIFORM STANDARD DRAWINGS CLARK COUNTY AREA
	POLE LOCATION & SIGNAL MOUNTING AT INTERSECTION (TWO POLE) OFFSET SIDEWALK
	DATE 7-10-03 DWG. NO. 404.1300 ALT SHEET 1 OF 2



NOTE:

1 ALTERNATE LOCATIONS FOR THE SIGNAL POLE MAY BE APPROVED BY THE AGENCY'S TRAFFIC ENGINEER.

SPECIFICATION REFERENCE		UNIFORM STANDARD DRAWINGS CLARK COUNTY AREA	
		POLE LOCATION & SIGNAL MOUNTING AT INTERSECTION (SINGLE POLE) OFFSET SIDEWALK	
		DATE 7-10-03	DWG. NO. 404.1300 ALT
		SHEET	2 OF 2



TABLE

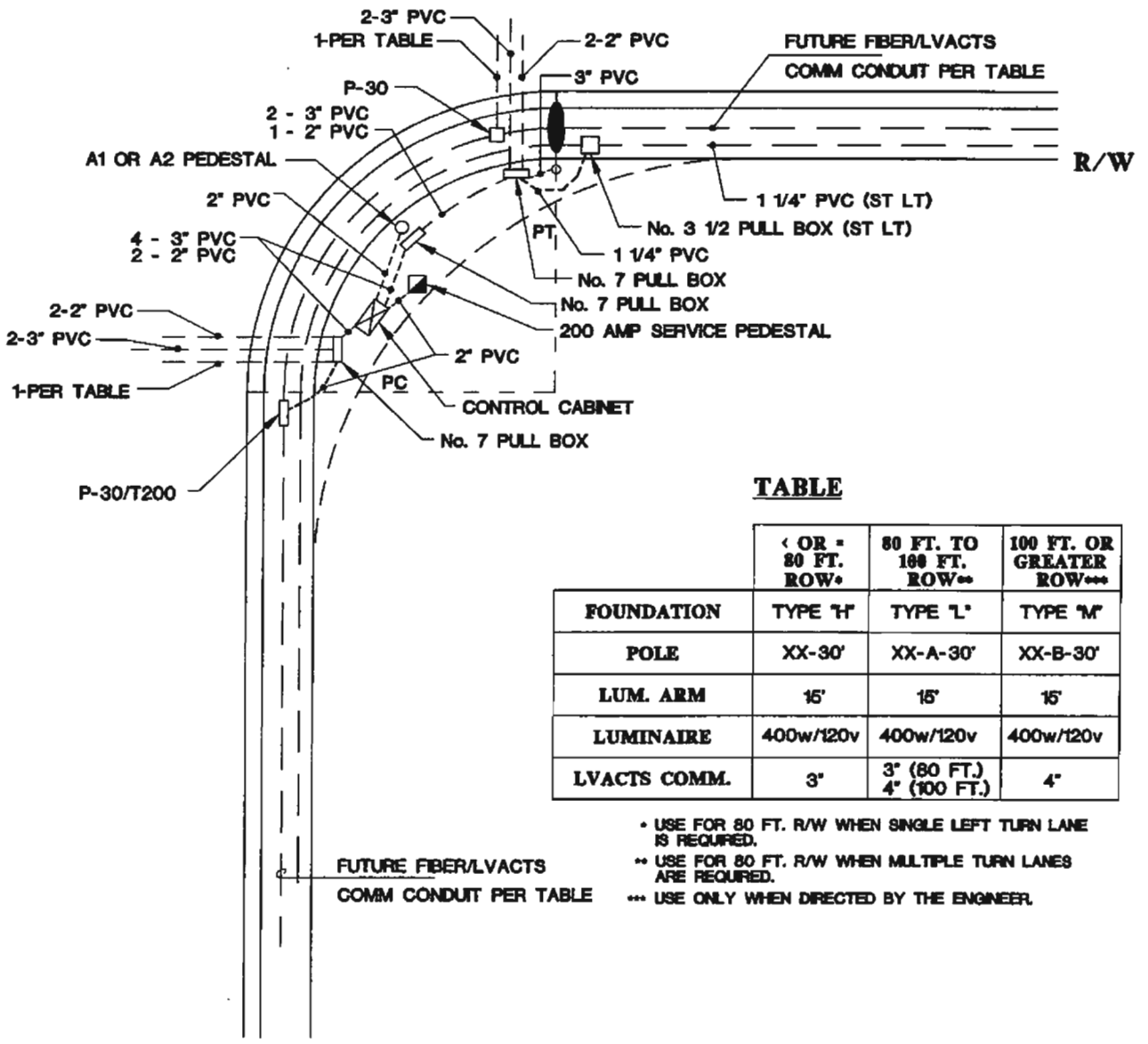
	(OR * 80 FT. ROW*	80 FT. TO 100 FT. ROW**	100 FT. OR GREATER ROW***
FOUNDATION	TYPE "H"	TYPE "L"	TYPE "M"
POLE	XX-30'	XX-A-30'	XX-B-30'
LUM. ARM	15'	15'	15'
LUMINAIRE	400w/120v	400w/120v	400w/120v
LVACTS COMM.	3"	3" (80 FT.) 4" (100 FT.)	4"

- * USE FOR 80 FT. R/W WHEN SINGLE LEFT TURN LANE IS REQUIRED.
- ** USE FOR 80 FT. R/W WHEN MULTIPLE TURN LANES ARE REQUIRED.
- *** USE ONLY WHEN DIRECTED BY THE ENGINEER.

NOTES:

1. ALL TRAFFIC SIGNAL POLES SHALL BE GALVANIZED PER ASTM A123.
2. ELECTRIC UTILITY TO SHOW FEEDER TO SERVICE PEDESTAL.
3. FOR POLE, POLE FOUNDATION, SERVICE PEDESTAL AND SERVICE PEDESTAL FOUNDATION DETAILS, SEE CLARK COUNTY AREA UNIFORM STANDARD DRAWINGS.
4. EXTEND THE 2-2" PVC, THE 2-3" AND THE 1-PER TABLE PVC SCHEDULE 40, 5 FEET PAST EDGE OF PAVEMENT STUB AND CAP OR CONNECT TO THE EXISTING TRAFFIC SIGNAL CONDUIT.
5. ALL EMPTY CONDUIT WILL CONTAIN A SINGLE No. 8 AWG THW OR BARE COPPER WIRE FOR THE PURPOSE OF LOCATING THE CONDUIT.

SPECIFICATION REFERENCE	UNIFORM STANDARD DRAWINGS CLARK COUNTY AREA		
	TYPICAL TRAFFIC SIGNAL UNDERGROUND LAYOUT WITH INTERIM STREET LIGHTING AND SERVICE PEDESTAL (CENTER OF CURVE RADIUS)		
	DATE 3-13-03	DWG. NO. 404.1306	SHEET 1 OF 2



TABLE

	< OR = 80 FT. ROW*	80 FT. TO 100 FT. ROW**	100 FT. OR GREATER ROW***
FOUNDATION	TYPE "H"	TYPE "L"	TYPE "M"
POLE	XX-30'	XX-A-30'	XX-B-30'
LUM. ARM	15'	15'	15'
LUMINAIRE	400w/120v	400w/120v	400w/120v
LVACTS COMM.	3"	3" (80 FT.) 4" (100 FT.)	4"

- * USE FOR 80 FT. R/W WHEN SINGLE LEFT TURN LANE IS REQUIRED.
- ** USE FOR 80 FT. R/W WHEN MULTIPLE TURN LANES ARE REQUIRED.
- *** USE ONLY WHEN DIRECTED BY THE ENGINEER.

NOTES:

1. ALL TRAFFIC SIGNAL POLES SHALL BE GALVANIZED PER ASTM A.123.
2. ELECTRIC UTILITY TO SHOW FEEDER TO SERVICE PEDESTAL.
3. FOR POLE, POLE FOUNDATION, SERVICE PEDESTAL AND SERVICE PEDESTAL FOUNDATION DETAILS, SEE CLARK COUNTY AREA UNIFORM STANDARD DRAWINGS.
4. EXTEND THE 2-2" PVC, THE 2-3" AND THE 1-PER TABLE PVC SCHEDULE 40, 5 FEET PAST EDGE OF PAVEMENT STUB AND CAP OR CONNECT TO THE EXISTING TRAFFIC SIGNAL CONDUIT.
5. ALL EMPTY CONDUIT WILL CONTAIN A SINGLE No. 8 AWG THW OR BARE COPPER WIRE FOR THE PURPOSE OF LOCATING THE CONDUIT.

SPECIFICATION REFERENCE	UNIFORM STANDARD DRAWINGS CLARK COUNTY AREA		
	TYPICAL TRAFFIC SIGNAL UNDERGROUND LAYOUT WITH INTERIM STREET LIGHTING AND SERVICE PEDESTAL (END OF CURVE RADIUS)		
	DATE 3-13-03	DWG. NO. 404.1306	SHEET 2 OF 2