

**UNIFORM STANDARD DRAWINGS
CLARK COUNTY AREA**

VOLUME II - YEAR 2001 REVISIONS

<u>DRAWING NUMBER AND TITLE</u>	<u>SHEET NUMBER(S)</u>	<u>NATURE OF CHANGE</u>	<u>EFFECTIVE DATE</u>
404.1419 Installation of Conduit	1	Revised to change references for "flowable backfill" to "controlled low strength material (CLSM)" and to clarify the requirement for mechanical placement of asphalt.	6/1/01
404.1419 Pull Box Foundation	1	Requirement for ½" rock replaced by use of compacted native material or sand.	8/1/01

Revised January 2002

FOREWORD

UNIFORM STANDARD DRAWINGS FOR PUBLIC WORKS' CONSTRUCTION, OFFSITE IMPROVEMENTS, CLARK COUNTY AREA, NEVADA VOLUME II

The Uniform Standard Drawings for Public Works Construction may be revised by issuance of revisions or supplements to correct errors and omissions found in these drawings and to reflect advanced thinking and the changing technology of the construction industry. Each revision will supersede any previous pertinent drawing. Upon approval by the Regional Transportation Commission, revisions will be posted to the RTC website, www.rtc.co.clark.nv.us, on the first day of the month following the meeting. **This volume contains all revisions through December 2001.**

To implement this end a Specifications Committee has been established as a permanent organization to continually study and recommend changes to the standard drawings. Interested parties may address suggested changes and questions to the Regional Transportation Commission, 600 South Grand Central Parkway, Suite 350, Las Vegas, Nevada, 89106-4512.

UNIFORM STANDARD DRAWINGS, CLARK COUNTY AREA

TABLE OF CONTENTS

VOLUME II
SECTION 404
TRAFFIC SIGNALS

DRAWING NUMBER

SYMBOLS

404.001	Standard Symbols for Traffic Signal Drawings (2 sheets)
404.002	Quadrant Detail

PULL BOXES

404.110	No. 3 1/2 Pull Box
404.120	No. 5 Pull Box
404.121	Reinforced Plastic Mortar Service Box Assembly #5
404.130	No. 7 Pull Box
404.131	Reinforced Plastic Mortar Service Box Assembly #7
404.139	Steel Pull Boxes
404.140(SH1)	Pull Box Street Cover
404.140(SH2)	Pull Box Cover Bonding Detail
404.141	<i>Pull Box Foundation</i>

FOUNDATIONS

404.201	Type "A" Foundation
404.202	Type "B" Foundation
404.203	Type "C" Foundation
404.204	DELETED
404.205	Type "E" Foundation
404.206	Type "F" Foundation
404.207	Type "G" Foundation
404.208	Type "H" Foundation
404.209	Type "L" Foundation
404.211	Type "I" Foundation
404.213	Type "J" and "K" Foundation
404.214	Service Pedestal Foundation

SECTION 404

TRAFFIC SIGNALS CONTINUED

DRAWING NUMBER

CABINET

404.304	Type V Cabinet
404.305	Type VI Cabinet
404.307	Type VIII Cabinet
404.308	Type IX Cabinet
404.309	Flashing Beacon Controller Cabinet
404.310	Wiring Diagram for Flashing Beacon Timer Controlled Operation

PRIORITY VEHICLE PREEMPTION SYSTEM

404.320	DELETED - See Uniform Standard Specifications Subsection 623T.02.12
---------	---

POLES AND POSTS

404.400(SH1)	School Flashing Sign on Pole with Luminaire
404.400(SH2)	School Flashing Sign on Type-III Pole
404.401(SH1)	Pedestrian Push Button Post for Special Sign (8'-6")
404.401(SH2)	Pedestrian Push Button Post for 2-½" Post Top Mounting
404.402	Signal Standard Type 1-A, 1-B
404.403	Sign Post with School Sign Mounted (2 sheets)
404.404	DELETED
404.405	Pedestal for Controller Cabinets
404.406	Type XX & XX-A -- 30' Signal and Luminaire Pole (6 sheets)
404.407(SH1)	Type XX -- 20' Signal Pole (45' or Less Mast Arms)
404.407(SH2)	Type XXA -- 20'-0" (50' through 60' Mast Arms) Signal Pole
404.408	DELETED
404.409(SH1)	Base Adaptor Plate for Type "H" Foundation
404.409(SH2)	Base Adaptor Plate for Type "L" Foundation
404.410	30' Luminaire with School Flashing Sign
404.411	School Sign Mounted on a Traffic Signal Standard
404.412	School Sign Pole Type XX -- 30'
404.413	School Sign Pole Type XX -- 20'
404.414	Streetlighting Pole with Illuminated Street Name Sign
404.415	Type III Pole with Illuminated Street Name Sign

SECTION 404

TRAFFIC SIGNALS
CONTINUED

DRAWING NUMBER

POLES AND POSTS (CON'T)

404.416	Type XX Pole with Illuminated Street Name Sign
404.417	Street Name Sign Internally Illuminated
404.418	Sign Mounting Illustration
404.420	Block Number Sign

MAST ARMS AND ASSEMBLIES

404.500	DELETED
404.501	DELETED
404.502	One Bolt Simplex Arm Attachment Clamp Assembly
404.503	Retrofit Streetlight Mast Arm

DRILLING DETAILS

404.600	Pole Drilling Details
404.601	Island Signal Pole Details for 10' Pole

ISLAND EQUIPMENT

404.700	Island Signal Location
---------	------------------------

DETECTORS

404.800	DELETED - See Uniform Standard Specifications Subsection 623T.02.04
404.801	DELETED - See Uniform Standard Specifications Subsection 623T.02.04
404.810	Sawcut Details for Induction Loops
404.811	Details at Loop Pull Box
404.820	1 Induction Loop for 1 Travel Lane
404.821(SH1)	1 Induction Loop for 2 Travel Lanes
404.821(SH2)	2 Induction Loops for 2 Travel Lanes
404.822(SH1)	1 Induction Loop for 3 Travel Lanes
404.822(SH2)	3 Induction Loops for 3 Travel Lanes
404.823(SH1)	1 Induction Loop for 4 Travel Lanes
404.823(SH2)	4 Induction Loops for 4 Travel Lanes

SECTION 404

TRAFFIC SIGNALS
CONTINUED

DRAWING NUMBER

DETECTORS (CON'T)

404.825	3 Induction Loops for 3 Travel Lanes
404.826	Multiple Loop System for Thru Lane
404.827	Multiple Loop System for for Left Turn Pocket
404.828	Type "Quadrapole" Loop Installation
404.829	Wire Diagrams for Multiple Loop Systems for Left Turn Pocket and Thru Lane
404.830	Circular Induction Loops for Travel Lanes
404.851	Pedestrian Push Button Detectors

BACK PLATES

404.900	Louvered Backplate for Mast Arm Mounted Signal
404.901	Louvered Backplate for Pole Mounted Signal
404.902	Louvered Backplate for 5 Section Signal Head
404.903	Louvered Backplate for 5 Section Signal Head

SIGNAL UNITS

404.1005	Bill of Materials - Signal Assemblies
----------	---------------------------------------

SIGNAL ASSEMBLIES

404.1011	Types: A-1, A-2T, A-3
404.1012	Types: A-4T, A-5T
404.1013	Type: A-6T
404.1015	Types: A-8T, A-9T
404.1016	Types: A-10T, A-11T
404.1017	Types: A-12T, A-13T
404.1018	Types: A-14T, A-15T
404.1019	Type: A-16T
404.1020	Type: A-17T

SECTION 404

TRAFFIC SIGNALS
CONTINUED

DRAWING NUMBER

MAST ARM SIGNAL ASSEMBLIES

404.1022 Types: M-2A, M-3A
404.1023 Types: M-3, M-2

SIGNAL ASSEMBLIES

404.1024 Types: B-1T, B-2T, B-3T
404.1025 Types: B-5T, B-6T
404.1026 Types: B-7T, B-8T, B-9T
404.1027 Types: B-10, B-11T
404.1028 Types: B-12T, B-13T
404.1029 Type: B-14T
404.1030 Protective/Permissive M-5 Signal Heads
404.1031 Protective/Permissive M-5 Signal Heads, Assemblies and Part List
 (3 sheets)
404.1032 Pedestrian Signal Assemblies W-0T, W-1, W-2T, W-3T, W-1T
404.1033 **DELETED**
404.1034 Pedestrian Push Button Sign Detail

VISORS AND LOUVERS

404.1100(SH1) Visors for 8" Signal
404.1100(SH2) Louvers and Visors for 12" Signal
404.1100(SH3) Geometrically Programmed Louver
404.1101 Backplate and Signal Head Assembly

SIGNAL HARDWARE

404.1200 Miscellaneous Signal Mounting Hardware
404.1201 Pole Plate Details
404.1202 Miscellaneous Signal Mounting Hardware
404.1203 Elevator Plumbizer
404.1204 Pole Plate with Wire Guide Details
404.1205 4 Way Center Hub
404.1206 Standard Malleable Pipe Hardware -- 1 ½" IPS
404.1207 Post Top Mounted Adapter with Terminal Compartment
404.1208 Side Bracket Mounted Adapter with Wire Guide

SECTION 404

TRAFFIC SIGNALS
CONTINUED

DRAWING NUMBER

SIGNAL HARDWARE (CON'T)

404.1210	One Way Mount
404.1211	One Way Mount for 3M Signals
404.1212	One Way Mount Detail

EQUIPMENT ORIENTATION ON SIGNAL POLES

404.1300(SH1)	Pole Location and Signal Mounting at Intersection
404.1300(SH2)	Pole Location and Signal Mounting at Intersection (Center of Return)
404.1301	Pole Location and Signals Mounting on Right Turn Islands
404.1302(SH1)	Future Pole Location Case I (Except City of Las Vegas)
404.1302(SH2)	Future Pole Location Case II
404.1306	Typical Traffic Signal Conduit Layout with Streetlighting

MISCELLANEOUS

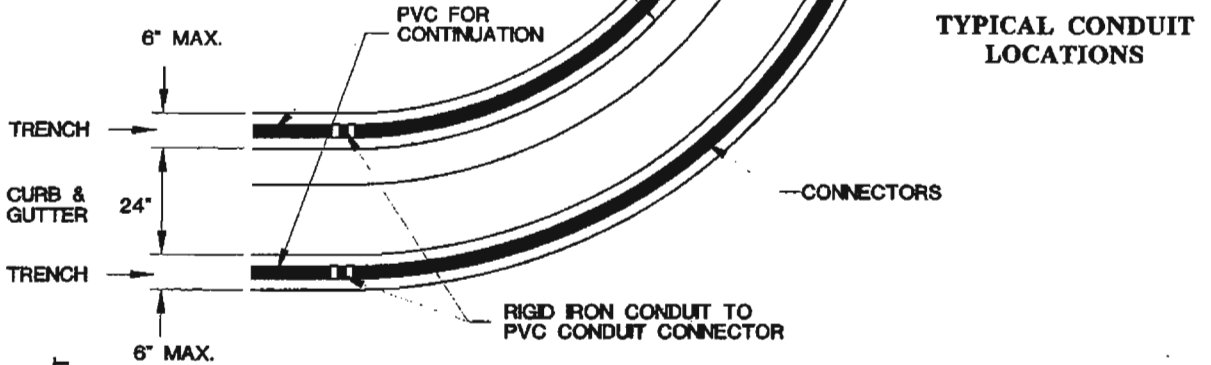
404.1410	12" Arrow Lens
404.1412	Single Meter Service Pedestal
404.1413	120/240 VAC Service on Wood Pole Overhead Service
404.1414	Auxiliary Cabinet Equipment Wiring
404.1418	Installation of Conduit into Pull Box from Lip of Gutter Trench
404.1419	<i>Installation of Conduit</i>
404.1422	DELETED - See Uniform Standard Specifications Subsection 623G.03.07

Revised January 2002

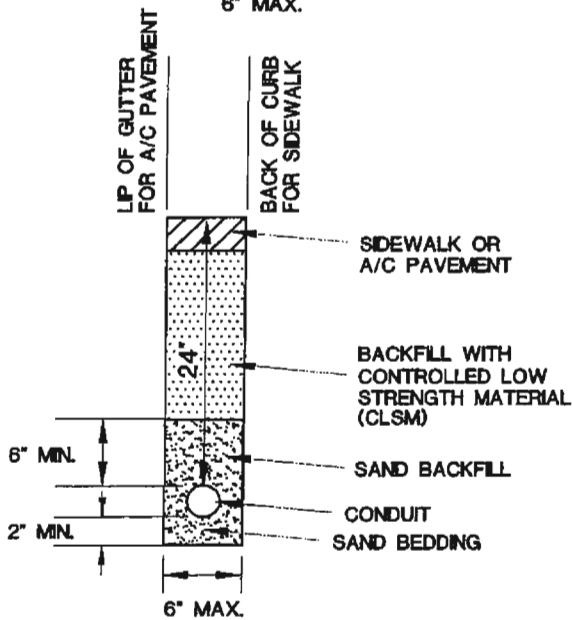
THE CONTRACTOR SHALL USE PVC COATED RIGID IRON CONDUIT CONFORMING TO SPECIFICATIONS.

PVC FOR CONTINUATION
RIGID IRON CONDUIT TO PVC CONDUIT CONNECTOR

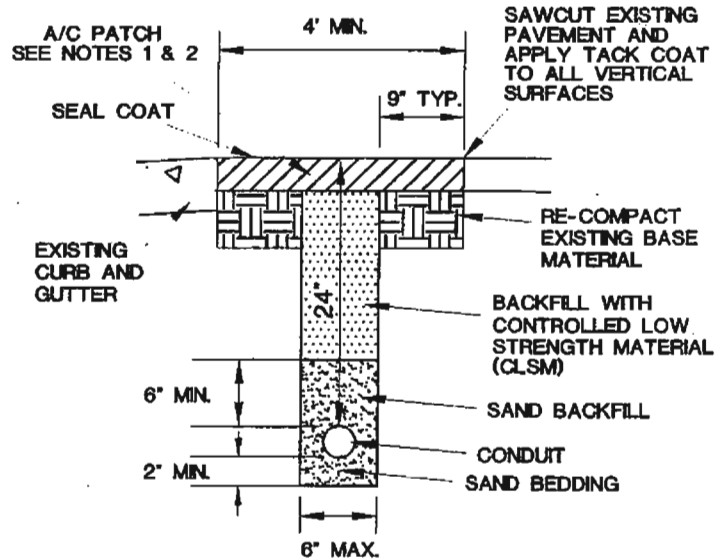
B.C. RADIUS VARIES



TYPICAL CONDUIT LOCATIONS



NEW CONSTRUCTION

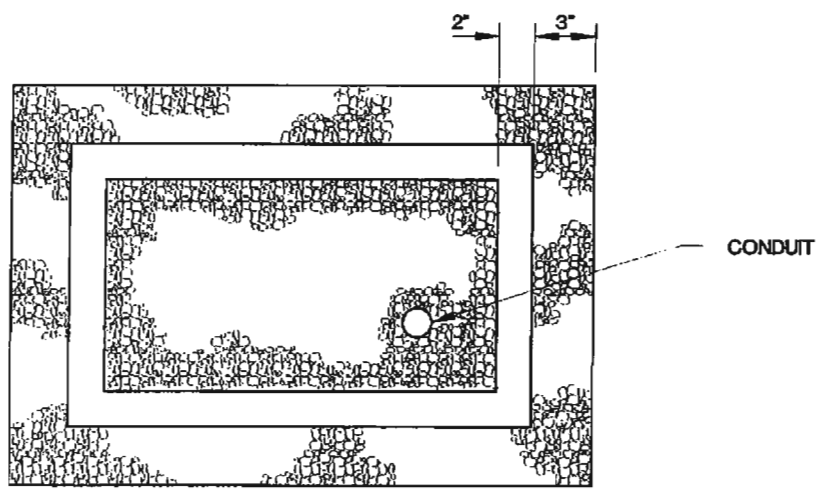
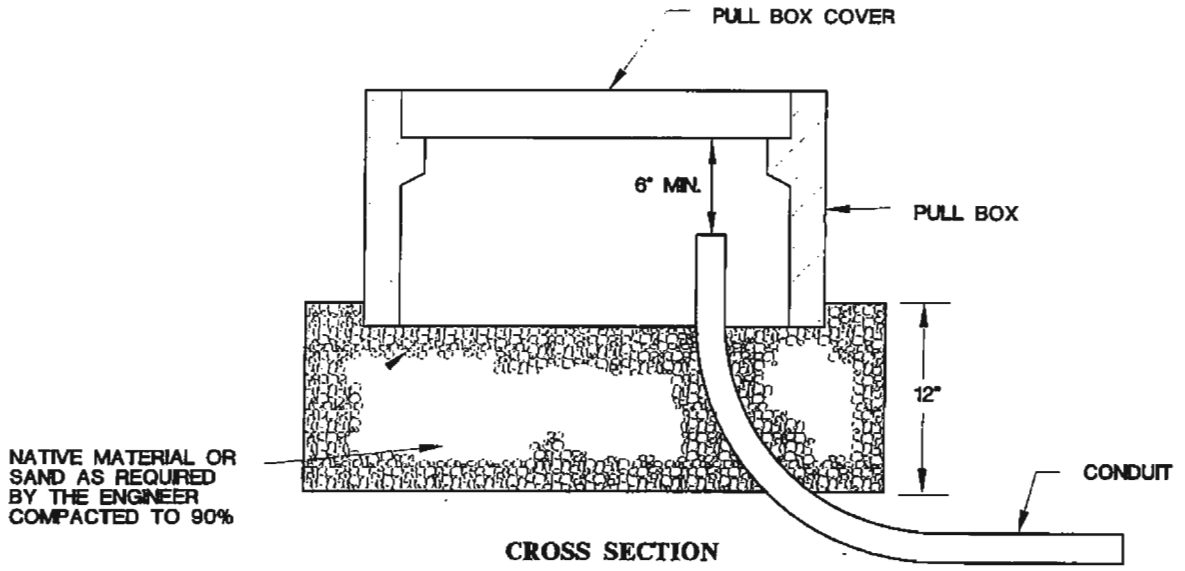


CONDUIT RETROFIT (EXIST. PAVEMENT)

NOTES (RETROFIT):

1. DEPTH TO MATCH EXISTING AC PAVEMENT, BUT NOT LESS THAN 4", PLACED IN MULTIPLE LIFTS OF EQUAL THICKNESS.
2. PATCH WIDTH SHALL BE SUFFICIENT TO ACCOMMODATE MECHANICAL PLACEMENT USING AGENCY APPROVED SPREADER BOX OR PAVING MACHINE, ROLLING AND COMPACTION PER UNIFORM STANDARD SPECIFICATION SECTION 401.03.11.
3. IF SAWCUT IS WITHIN 3 FEET OF EDGE OF EXISTING ASPHALT CONCRETE SURFACE OR OTHER PATCH, REMOVE EXISTING PAVEMENT TO THAT EDGE AND REPLACE ENTIRE SECTION.
4. IF 24" COVER IS NOT POSSIBLE, THEN RED CONCRETE ENCASEMENT MIN. 4" ABOVE CONDUIT REQUIRED.
5. CONTROLLED LOW STRENGTH MATERIAL (CLSM) MAY BE INSTALLED TO FINAL GRADE FOR TEMPORARY PATCHING.
6. PERMANENT PATCH MIX DESIGN SHALL BE AS REQUIRED BY ENGINEER.

SPECIFICATION REFERENCE	UNIFORM STANDARD DRAWINGS CLARK COUNTY AREA		
	INSTALLATION OF CONDUIT		
	DATE 5-17-01	DWG. NO. 404.1419	SHEET 1 OF 1



SPECIFICATION REFERENCE		UNIFORM STANDARD DRAWINGS CLARK COUNTY AREA	
		PULL BOX FOUNDATION	
		DATE 7-12-01	DWG. NO. 404.141
		SHEET 1 OF 1	