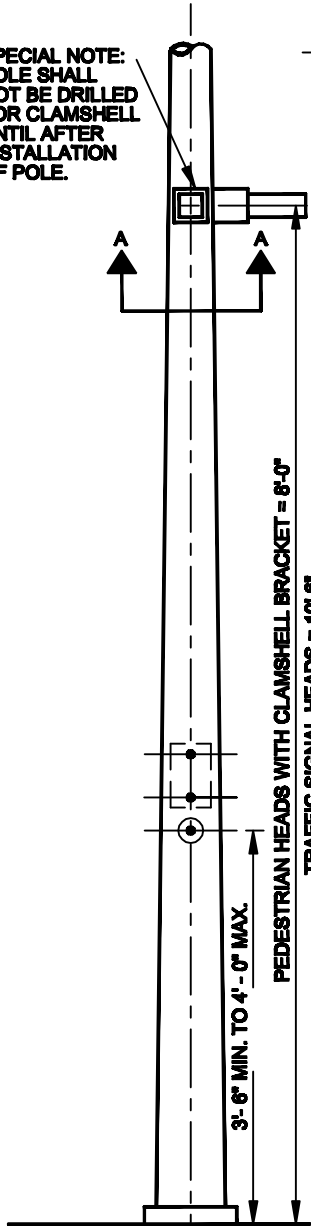
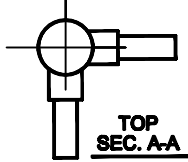
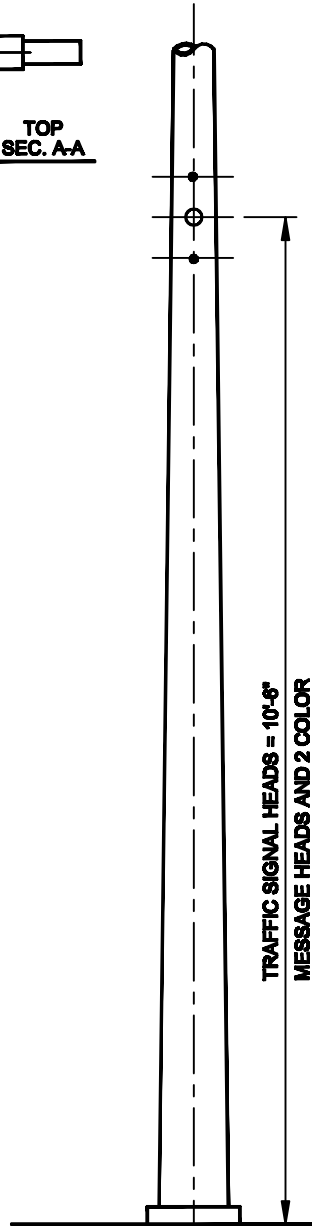


(NO SCALE)

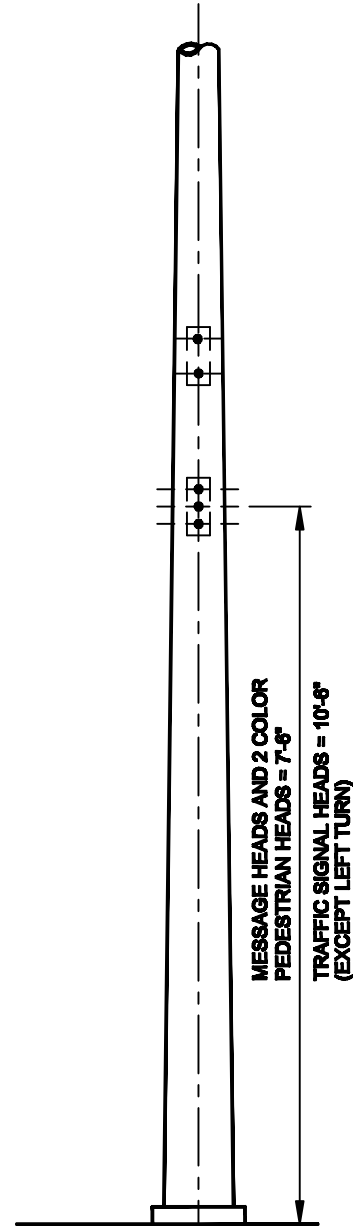
SPECIAL NOTE:
POLE SHALL
NOT BE DRILLED
FOR CLAMSHELL
UNTIL AFTER
INSTALLATION
OF POLE.



PUSH BUTTON
DRILLING DETAIL



SIDE BRACKET
DRILLING DETAIL



POLE PLATE
DRILLING DETAIL

NOTES:

1. DRILLING OF POLE TO BE ORIENTED ACCORDING TO POLE LAYOUT, SPECIFICATIONS, AND ENGINEER.
2. DIMENSIONS ARE FROM SIDEWALK LEVEL.
3. DIMENSIONS ARE TO WIRE INLET HOLE ONLY. USE MANUFACTURER'S TEMPLATE TO LOCATE ALL OTHER HOLES.
4. ALL HOLES ARE TO CONFORM TO MANUFACTURER'S RECOMMENDATIONS.
5. PEDESTRIAN SIGNAL HEADS SHALL BE MOUNTED WITH THE BOTTOM OF THE SIGNAL HOUSING INCLUDING BRACKETS AND PLUMBING NOT LESS THAN 7' NOR MORE THAN 10' ABOVE SIDEWALK LEVEL. TRAFFIC SIGNAL HEADS SHALL BE MOUNTED WITH THE BOTTOM OF THE SIGNAL HOUSING INCLUDING BRACKETS AND PLUMBING NOT LESS THAN 10' ABOVE SIDEWALK LEVEL.

SPECIFICATION REFERENCE		UNIFORM STANDARD DRAWINGS CLARK COUNTY AREA	
		POLE DRILLING DETAILS	
		DATE 05/20/10	DWG. NO. 404.600