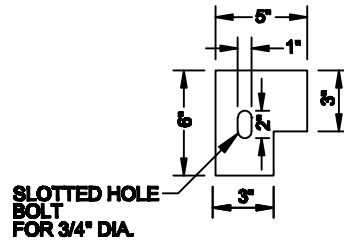
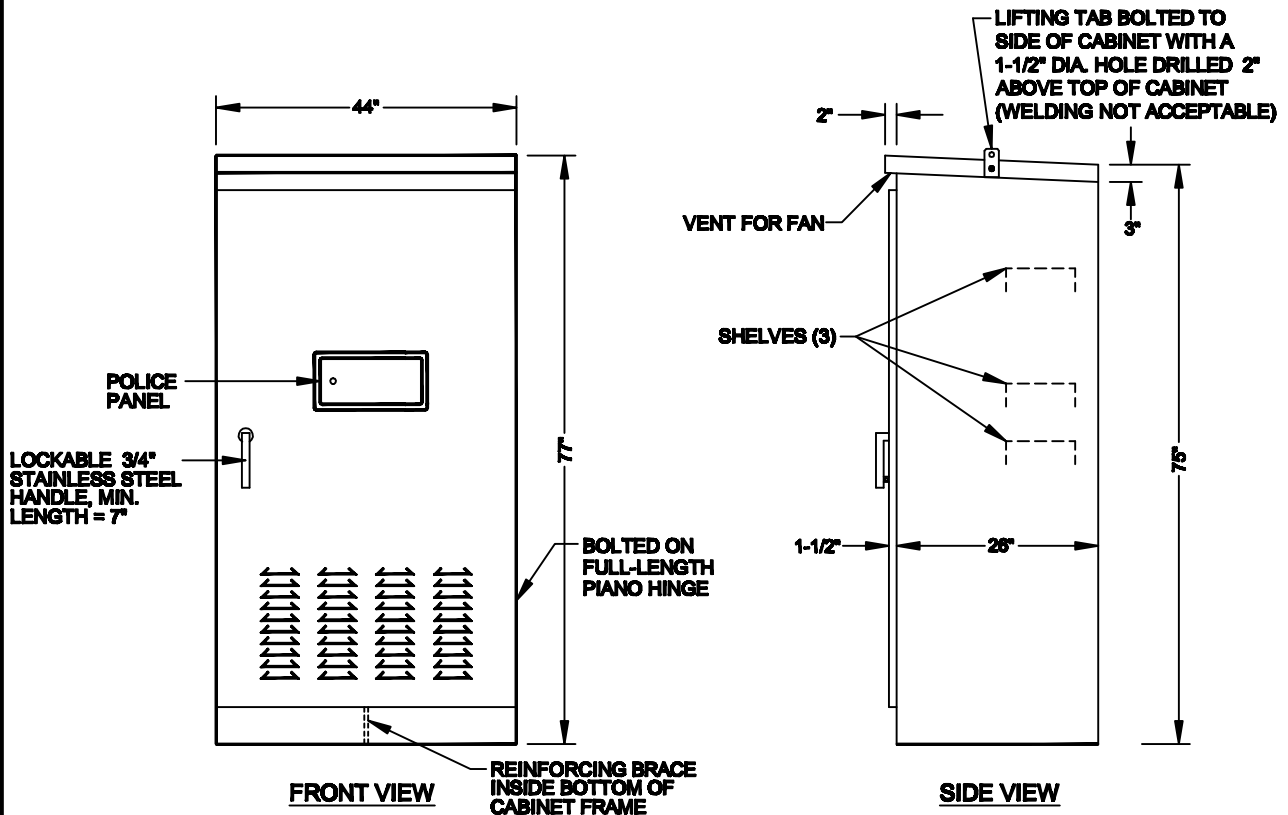


INSIDE BOLT PATTERN DETAIL



REINFORCING PLATE DETAIL



SIZE "R" CABINET

NOTES:

1. MATERIAL = 0.125" ALUMINUM
2. INTERIOR AND EXTERIOR COATING TO BE DETERMINED BY THE AGENCY.
3. SHELVES SHALL BE REMOVABLE AND ADJUSTABLE FOR VERTICAL SPACING.
4. DOOR SHALL LOCK AT THREE POINTS.
5. FOR FOUNDATION DETAILS AND ANCHOR BOLT LOCATIONS, SEE DRAWING No. 404.213.
6. INCLUDE 3/4" x 18" x 3" HOT-DIP GALVANIZED ANCHOR BOLTS WITH EACH CABINET.

SPECIFICATION REFERENCE		CLARK COUNTY, NEVADA	
		SIZE "R" CABINET	
		DATE 05/20/10	DWG. NO. 404.307